

**BEFORE THE PUBLIC UTILITIES COMMISSION OF THE  
STATE OF CALIFORNIA**

Application of Southern California Edison  
Company (U 338-E) for Approval of Energy  
Efficiency Rolling Portfolio Business Plan.

And Related Matters

A.17-01-013  
(Filed January 17, 2017)

A.17-01-014  
A.17-01-015  
A.17-01-016  
A.17-01-017

**SOUTHERN CALIFORNIA EDISON COMPANY'S (U 338-E) RESPONSES TO THE  
REQUEST FOR SUPPLEMENTAL BUDGET AND RELATED INFORMATION**

FADIA RAFEEDIE KHOURY  
JANE LEE COLE

Attorneys for  
SOUTHERN CALIFORNIA EDISON COMPANY

2244 Walnut Grove Avenue  
Post Office Box 800  
Rosemead, California 91770  
Telephone: (626) 302-3860  
Facsimile: (626) 302-7740  
E-mail: Jane.Lee.Cole@sce.com

Dated: **June 12, 2017**

**BEFORE THE PUBLIC UTILITIES COMMISSION OF THE  
STATE OF CALIFORNIA**

Application of Southern California Edison  
Company (U 338-E) for Approval of Energy  
Efficiency Rolling Portfolio Business Plan.

And Related Matters

A.17-01-013  
(Filed January 17, 2017)

A.17-01-014  
A.17-01-015  
A.17-01-016  
A.17-01-017

**SOUTHERN CALIFORNIA EDISON COMPANY'S (U 338-E) RESPONSES TO THE  
REQUEST FOR SUPPLEMENTAL BUDGET AND RELATED INFORMATION**

**I.**

**INTRODUCTION**

Pursuant to the May 15, 2017 Email Ruling of the Administrative Law Judge Valerie U. Kao granting the request of Southern California Edison Company (SCE), San Diego Gas & Electric Company (SDG&E), Pacific Gas and Electric Company (PG&E), Southern California Gas Company, and Marin Clean Energy, San Francisco Bay Area Regional Energy Network, Southern California Regional Energy Network, and Tri-County Regional Energy Network), and The Utility Reform Network (TURN), together, the “Moving Parties” to submit certain responses to questions in Attachment A of the Scoping Memo and supplemental budget information by June 12, 2017, SCE submits the following supplemental budget and related information below.

The April 14, 2017 Scoping Memo directed “the business plan proponents to meet and confer with the interested parties to develop a standardized template for PA’s proposed

budgets.”<sup>1</sup> In response to this directive, the PAs held several meet and confer sessions with TURN and the Office of Ratepayer Advocates (ORA) and developed a common budget template (shown in Appendix A) as well as common budget-related questions to be answered by each PA (shown in Section II below) by June 12, 2017. SCE’s supplemental budget information in Section II below and in Appendix A is intended to provide the information in a manner that follows a format resulting from the meet-and-confer sessions with interested parties. SCE caveats that its budgets information below should be reviewed with a consideration that EE program administration will evolve under the new Rolling Portfolio structure, which include implementation of statewide programs and an expansion of third party programs to a minimum of 60% of SCE’s EE portfolio budget. Thus, the budget structures adopted in this proceeding should be flexible to allow PAs to perform their roles and responsibilities in the Rolling Portfolio EE market structure.

## II.

### **NARRATIVE DESCRIPTION OF SCE’S ORGANIZATIONS**

#### **SUPPORTING ITS EE PORTFOLIO**

##### **A. Description of SCE’s Organizations Supporting Its EE Portfolio**

In Request I.A., TURN/ORA ask for various information, including functions conducted by each organization, organization charts, staffing needs by organization, non-program functions performed by contractors, anticipated cost drivers, and explanation of forecasting cost method. SCE’s response to each item is provided below.

##### **1. Functions Conducted by Each Organization**

Multiple functions are performed to support SCE’s EE portfolio, including program management; engineering services; marketing; planning; compliance; contract management; and evaluation, measurement, and verification (EM&V). These functions

---

<sup>1</sup> Scoping Memo and Ruling of Assigned Commissioner and Administrative Law Judge, in A.17-01-013 et al, dated April 14, 2017, at p. 10.

are provided by various SCE organizations. To aid parties' understanding of which functions are performed by which SCE organizations, SCE included in Appendix B the function descriptions performed by each respective organization that supports its EE portfolio.

## **2. Management Structure and Organization Charts<sup>2</sup>**

As described above, multiple SCE organizations support its EE portfolio, including SCE's Customer Programs and Services organization (CP&S), Business Customer Division (BCD), Customer Service Operations Division (CSOD), and Regulatory Affairs. SCE provides its organization chart for those organizations. In general, SCE's chief executive officer, president, and vice-presidents do not directly charge the EE balancing account. However, these positions have been included in the organization charts to show line-of-sight from SCE employees to executive management. In addition, certain other support organizations do not charge to the EE balancing account and have therefore been excluded from the attached documentation. These organizations include Finance, Legal, and Information Technology. Finally, the positions included in SCE's organization charts include SCE employees that charged to the EE balancing account during the first quarter of 2017. The organization charts exclude contingent workers, vacancies, and employees on leave of absence, interns, and service maintenance providers. See Appendix B for SCE's organization charts for those groups that support its EE portfolio.

---

<sup>2</sup> The provided organization charts provide SCE headcounts, which are represent the SCE employees that charged SCE's EE balancing account from January to March 2017. Headcount is different than "full time equivalent" or FTE employees. FTEs are a unit of measure showing how many employees SCE has assuming all employees work a full-time schedule. In addition, the headcount information in the organization charts represents SCE employees only, and does not include contingent workers, supplemental workers, vacancies, employees on leave of absence, interns, and service maintenance providers.

### **3. Staffing Needs by Organization**

Full Time Equivalents (FTEs) are a unit of measure showing how many employees SCE has assuming all employees work a full-time schedule. In 2016, 392 FTEs supported SCE's EE portfolio. In 2018, SCE forecasts 377 FTEs to support its EE portfolio.

At this time, it is difficult for SCE to provide 2019 and 2020 forecast FTEs to supports its EE portfolio due to following factors:

1. The EE Potential & Goals Study is being updated that will result in a new PA savings goals.
2. Solicitation for new programs by third parties has not taken place yet, so the number and type of programs are unknown.
3. Implementation Plans associated with new programs are not completed. Implementation plans will determine final design of programs with detailed staffing needs.

See SCE's Response to Request I.B. and Appendix C for SCE's EE FTEs by functional group.

### **4. Non-Program Functions Performed by Contractors**

Currently, contractors (e.g., advisory consultants) perform the functions listed below. However, none of the following functions are fully "outsourced" to contractors; rather, contractors supplement SCE employees in performing such functions.

1. Strategic planning support
2. Program and portfolio support
3. Regulatory support and other support, as necessary
4. Policy support
5. Project management support
6. Program planning and support
7. DSM program development and end-use analysis

8. Analysis of DSM valuation metrics, including relevant administrative, rebate cost, and per unit costs benchmarks
9. Engineering support or other technical services
10. Evaluation of major cost drivers to existing portfolio and an assessment of opportunities for modification
11. Identification of process efficiencies in existing operations, focusing on CP&S and CSOD, coordinating with ongoing CSOD work

SCE anticipates that in 2019 and 2010 contractors (e.g., advisory consultants) will perform functions similar to what they perform currently (described above), although functions associated with program planning will likely be utilized to a lesser extent as more programs are proposed, designed, and implemented by third parties.

**5. Anticipated Cost Drivers of In-House Cost Changes by Organization**

The primary drivers of administrative and implementation costs for programs are the number and type of programs offered. SCE currently offers and reports on over 80 programs in its EE portfolio. Each program requires a certain level of staffing based on the program delivery method. For example, an upstream lighting program that targets large manufacturers will have minimal administrative and implementation costs. However, a downstream lighting program that targets many customers that require a high level of interaction between program staff, engineers, vendors and other program administrators will have high administrative and implementation costs. Other more complex or mass market programs will require sales and marketing support.

SCE incorporated significant efficiencies in its portfolio over the last two years. Future efficiencies are expected to be based on experience with new and innovative programs offered by third parties in the marketplace. Additionally, SCE anticipates that the new Statewide Administration of EE programs may yield additional efficiencies; however because the new Statewide Administration model has not yet been fully developed, SCE does not yet know exactly how administrative costs for these programs

will be affected. Also, SCE will be transitioning as much of its portfolio as possible to third parties to achieve the requirement that at least 60 percent of the portfolio be designed and delivered by third parties by the end of 2020. Without knowing what specific programs and delivery channels third parties will propose and SCE will ultimately select, it is difficult to forecast exactly how administrative and implementation costs will vary over time. SCE is also aware there are significant cost impacts in the marketplace that could place upward pressure on costs. For example, increasing review costs and declining measures have made it harder for vendors to deliver results. For these reasons, SCE assumed that its existing level of administrative and implementation efficiencies will persist over the forecast period. The anticipated major cost drivers of in-house cost changes are:

1. Number and type of programs funded
2. New 2018 revised savings goal based on the update to the Potential and Goals Study
3. Cost for new programs launched through Third-Party Solicitation process
4. Cost to administer Statewide programs
5. Legislative mandates that require new or increased funding to implement.
6. Number of data request or need for additional reporting requirements

**6. Explanation of Method for Forecasting Costs**

To arrive at the 2018-2025 budget forecasts, SCE adjusted its 2017 proposed budget and savings to reflect the increase or decrease in savings goals assigned by the Commission in D.15-10-028 and to incorporate the updated avoided costs. This was accomplished by using data, by sector, from the 2015 Potential and Goals Study to evaluate a sector's savings potential and adjusting the sector's corresponding budget needed to accomplish the projected savings values. Cost-effectiveness (Total Resource Cost (TRC) and Program Administrator Cost (PAC)) for 2018-2020 was calculated using the Cost Effectiveness Tool by modifying the inputs to reflect portfolio measure

optimization and the anticipated impact of new third-party designed and implemented programs. SCE's budget also includes the budget and estimated savings for the Southern California Regional Energy Network (SoCalREN).

For its 2017 budget, which is the baseline for the 2018-2025 budget, SCE optimized its demand-side management portfolio resulting in a 2017 proposed budget that is approximately \$22 million less than SCE's 2016 budget. The portfolio optimization process included activities such as: internal organizational and process changes to improve efficiency, simplifying and consolidating programs, eliminating or reducing non-cost-effective programs, adjusting incentive levels based on analytics, incorporating alternative incentives besides rebates (e.g. on-bill financing).

**B. “Full-Time Equivalents” (FTEs) by Organization**

In Request I.B., TURN/ORA ask for SCE's FTEs by organization for 2016 or 2017 recorded, and “at least” 2018. SCE's FTEs supporting its EE portfolio is provided in Appendix C.

**C. Costs by Functional Area of Management Structure**

In Request I.C., TURN/ORA ask for expenses broken out by functional area of management structure. See Appendix D for the requested information.

**D. Cost Drivers Across the EE Organization**

In Request I.D., TURN/ORA ask for cost drivers across SCE's EE organization. Please see the discussion in Section A.5. above for the requested information.

**E. Allocation of Labor and O&M Costs**

All EE-related time for employee working on EE is tracked through internal orders or distributed cost centers (EE cost objects) that settle costs to internal orders, which are assigned to an account grouping for EE. The portion of an employee's time is allocated to those orders, and therefore “EE rates” (Public Purpose Programs), based on the time spent by the employee working on tasks related to the EE portfolio of programs. All time sheets for hourly employees and some salaried employees are approved by the employee's manager. For other salaried



employees, their time is allocated to EE cost objects on a pre-established basis determined by their manager based on the expected time to be spent on tasks related to EE for the year. These allocations are reviewed periodically and when employee's positions and responsibilities change. SCE's SAP system allows for timekeeping increments of 15 minutes. Time sheets and pre-established accounting for EE-related tasks described above is the basis for determining the appropriate EE and non-EE labor costs.

SCE labor costs charged against EE rates include paid time off but are not loaded with benefits. SCE's benefits burden is collected through GRC rates. However, SCE does include the benefits burden in its filings to be included for determining cost-effectiveness. They are currently reported and filed in the CPUC CEDARS system as a separate program.

Non-labor resource costs are allocated to EE and non-EE activity similarly to labor costs, by time for tasks completed. Non-labor resources such as events, conferences or marketing campaigns may be allocated based on the agenda or topics covered. These costs may include activities that are supported through GRC or other rates.

In all cases, all costs related to EE rates are recorded separately from those related to GRC rates and not included in determining the forecasts for the GRC.

### III.

#### **BUDGET TABLES INCLUDING INFORMATION IDENTIFIED IN THE SCOPING MEMO AND RULING OF COMMISSIONER AND ADMINISTRATIVE LAW JUDGE**

The Scoping Memo and Ruling of Assigned Commissioner and Administrative Law Judges<sup>3</sup> (Scoping Memo) requested certain information regarding SCE's proposed budgets (Attachment A). As such, SCE provides the information identified below:

---

<sup>3</sup> See Scoping Memo and Ruling of Assigned Commissioner and Administrative Law Judges, Application for Approval of Energy Efficiency Rolling Portfolio Business Plan, A.17-01-013 et al, April 14, 2017.

**A. Energy Savings Targets and Expenditures**

In Question I.C.8., the Assigned Commissioner and Administrative Law Judges (ALJs) requested “[A] single table summarizing energy savings targets, and expenditures by sector (for the six specified sectors). This table should enable / facilitate assessment of relative contributions of the sectors to savings targets, and relative cost-effectiveness.” SCE has provided the requested information in Appendix E of this response.

**B. In-House Budget by Sector and Cross-Cutting Program**

In Question I.C.9., the Assigned Commissioner and ALJs requested of the Scoping Memo, the Assigned Commissioner and ALJs requested the following: “Using a common budget template developed in consultation with interested stakeholders (hopefully agreed upon at a “meet and confer” session), display how much of each year’s budget each PA anticipates spending “in-house” (e.g., for administration, non-outsourced direct implementation, other non-incentive costs, marketing), by sector and by cross-cutting program.” SCE has provided the requested information in Appendix F of this response.

**C. Solicitation Schedule**

In Question I.C.10., the Assigned Commissioner and ALJs requested “[A] table akin to PG&E’s Figure 1.9 (Portfolio Overview, p 37) or SDG&E’s Figure 1.10 (p. 23) that not only shows anticipated solicitation schedule of “statewide programs” by calendar year and quarter, but also expected solicitation schedule of local third-party solicitations, by sector, and program area (latter to extent known, and/or by intervention strategy if that is more applicable). For both tables, and for each program entry on the calendar, give an approximate size of budget likely to be available for each solicitation (can be a range). SCE has provided this requested information in Appendix G of this response.

Consistent with the Commission's direction, statewide program budgets will be determined by the funding PAs based on the savings potential in their respective service territories, Commission-approved goals, historical budgets, and their influence on overall portfolio cost-effectiveness. For existing statewide programs, the funding PAs will also use their

historic program budget levels to conduct statewide program solicitations. For new statewide programs, the budget will be determined based on each PA's overall portfolio cost-effectiveness analysis and the Commission-approved goals. These budgets will be adjusted and finalized by each PA, based on the results of the solicitations, to arrive at the annual statewide program budgets. Consistent with the Rolling Portfolio approach, the statewide program budgets may change over the life of the Business Plan.

Any budget updates will be presented in the annual budget advice letter.

**D. Statewide Aggregate Budgets for Each Statewide Program**

In Question I.C.14., the Assigned Commissioner and ALJs requested "What are the statewide aggregate budgets for each statewide program?" See Appendix H for the requested information.

**IV.**

**CONCLUSION**

SCE appreciates the opportunity to provide its supplemental budget and related information.

Respectfully submitted,

FADIA RAFEEDIE KHOURY  
JANE LEE COLE

*/s/ Jane Lee Cole*

By: Jane Lee Cole

---

Attorneys for  
SOUTHERN CALIFORNIA EDISON COMPANY

2244 Walnut Grove Avenue  
Post Office Box 800  
Rosemead, California 91770  
Telephone: (626) 302-3860  
Facsimile: (626) 302-6693  
E-mail: Jane.Lee.Cole@sce.com

June 12, 2017

**Appendix A**

**Standardized Template for the Program Administrators' Proposed Budgets**

**A.17-01-013 et al.**  
**Meet and Confer Process: Supplemental Budget Showing**

**Proposal by TURN and ORA**  
**May 2, 2017**

**I. DESCRIPTION OF IN-HOUSE EE ORGANIZATIONAL STRUCTURE & ASSOCIATED COSTS**

**A. Narrative description of in-house departments/organizations supporting the PA's EE portfolio**

- Functions conducted by each department/organization
- Management structure and org chart
- Staffing needs by department/organization, including current and forecast for 2018, as well as a description of what changes are expected in the near term (2019-2020) or why it's impossible to predict beyond 2018, if that's the PA's position.
- Non-program functions currently performed by contractors (e.g. advisory consultants), as well as a description of what changes are expected in the near term (2019-2020) or why it's impossible to predict beyond 2018, if that's the PA's position.
- Anticipated drivers of in-house cost changes by department/organization
- Explanation of method for forecasting costs

**B. Table showing PA EE "Full Time Equivalent" headcount by department/organization**

- TURN and ORA like this example, taken from testimony PG&E's 2017 GRC addressing its Energy Procurement department. We would be looking for 2016 or 2017 "recorded" positions, depending on what's most appropriate for the PA, or both, if that provides the most clarity. For forecast years, we'd want at least 2018.
  - Note, if PAs' FTE needs change, these changes can be made without reporting or seeking CPUC approval

A.17-01-013 et al.  
**Meet and Confer Process: Supplemental Budget Showing**

**TABLE 6-3(a)**  
**EP HEADCOUNT**  
**NUMBER OF PLANNED POSITIONS**

Line No.	Description	2014 Positions	2015 Forecast	2016 Forecast	2017 Forecast
1	EP Administrative Office	4	4	4	4
2	Energy Supply Management (ESM)	126	131	131	134
3	Renewable Energy (RE)	38	40	40	41
4	Energy Policy, Planning and Analysis (EPPA)	46	46	46	46
5	Value Based Reliability (VBR)	10	12	12	12
6	Energy Contract Management and Settlements (ECMS)	79	80	80	80
7	Energy Compliance and Reporting (ECR)	18	18	18	18
8	<b>Total</b>	<b>321</b>	<b>331</b>	<b>331</b>	<b>335</b>

(a) See WP Table 6-7, Exhibit (PG&E-5).

**C. Table showing costs by functional area of management structure**

- Expenses broken out into labor, non-labor O&M (with contract labor identified) (\* Note, in case of conflict, excel budget template will control.)
- Identify any capital costs

**D. Table showing cost drivers across the EE organization**

- TURN and ORA like this example, taken from testimony PG&E's 2017 GRC addressing its Energy Procurement department.
- While this example pertains to departmental cost increases, in our case, cost increases or decreases would be attributed to major cost drivers.

**TABLE 6-2(a)**  
**EP COST INCREASE**  
**2015-2017 EXPENSE BY COST DRIVER**

Line No.	Description	Increase in Thousands of \$	Percent of Total Increase
1	Escalation	3,597	57
2	Portfolio Complexity	1,136	18
3	Regulatory Mandates	1,192	19
4	Process Improvements	400	6
5	<b>Total</b>	<b>6,324</b>	<b>100</b>

(a) See WP Table 6-6, Exhibit (PG&E-5).

**A.17-01-013 et al.**  
**Meet and Confer Process: Supplemental Budget Showing**

**E. Explanation of allocation of labor and O&M costs between EE-functions and GRC-functions or other non-EE functions**

- When an employee spends less than 100% of her/his time on EE, how are costs tracked and recovered (e.g., on a pro rata basis between EE rates and GRC rates; when time exceeds a certain threshold, all to EE; etc.).
- Describe the method used to determine the proportion charged to EE balancing accounts for all employees who also do non-EE work.
- Identify the EE functions that are most likely to be performed by employees who also do non-EE work (e.g. Customer Account Representatives?)
- Are labor costs charged to EE fully loaded?
- How are burden benefit-related administrative and general (A&G) expenses for employees who work on EE programs recovered (EE rates or GRC rates)?  
\*\*PG&E allocates these costs to EE pursuant to a settlement agreement with MCE and TURN, which was adopted in D.14-08-032.
- When EE and non-EE activities are supported by the same non-labor resources, how are the costs of those resources or systems allocated to EE and non-EE activities?
- Identify the EE O&M costs that are most likely to be spread to non-EE functions as well as EE, if any



**A.17-01-013 et al.**  
**Meet and Confer Process: Supplemental Budget Showing**

**II. BUDGET TABLES INCLUDING INFORMATION IDENTIFIED IN THE SCOPING MEMO**

**A. Attachment-A, Question C.8**

“Present a single table summarizing energy savings targets, and expenditures by sector (for the six specified sectors). This table should enable / facilitate assessment of relative contributions of the sectors to savings targets, and relative cost-effectiveness.”

- TURN and ORA invite the PAs to propose a common table format for this information. We don’t have anything specific in mind.
- Additionally, include a brief description of the method used by the PA to estimate the costs presented in the C.8 Table.

**B. Attachment-A, Question C.9**

“Using a common budget template developed in consultation with interested stakeholders (hopefully agreed upon at a “meet and confer” session), display how much of each year’s budget each PA anticipates spending “in-house” (e.g., for administration, non-outsourced direct implementation, other non-incentive costs, marketing), by sector and by cross-cutting program.”

- TURN and ORA invite the PAs to propose a common table format for this information. We don’t have anything specific in mind.
- Additionally, include a brief description of the method used by the PA to estimate the costs presented in the C.9 Table.

**C. Attachment-A, Question C.10**

“Present a table akin to PG&E’s Figure 1.9 (Portfolio Overview, p 37) or SDG&E’s Figure 1.10 (p. 23) that not only shows anticipated solicitation schedule of “statewide programs” by calendar year and quarter, but also expected solicitation schedule of local third-party solicitations, by sector, and program area (latter to extent known, and/or by intervention strategy if that is more applicable). For both tables, and for each program entry on the calendar, give an approximate size of budget likely to be available for each solicitation (can be a range).”

- TURN and ORA invite the PAs to propose a common table format for this information. We don’t have anything specific in mind.
- Additionally, include a brief description of the method used by the PA to estimate the costs presented in the C.10 Table.

Sector	2016 EE Portfolio Expenditures (\$Million)				2018 EE Portfolio Budget (\$Million)				2016 EE Portfolio Savings			2018 EE Portfolio Forecasted Savings		
	Labor	Non-Labor (excl. Incentives)	Incentives	Total	Labor	Non-Labor (excl. Incentives)	Incentives	Total	KWH	KW	M THERMS	KWH	KW	M THERMS
Residential														
Commercial														
Agricultural														
Industrial														
Public (GP)														
Cross Cutting*														
Total Sector Budget														
EM&V-PA														
EM&V-ED														
OBF - Loan Pool**														
BayREN														
MCE														
EE Total														

\* Cross Cutting Sector includes Codes & Standards, Emerging Technologies, Workforce Education & Training, Financing.

\*\* For SDG&E and SCG the loan pool is not part of the authorized EE portfolio budget and is collected and tracked through a separate balancing account.

**A. → Attachment-A, Question C.8**

“Present a single table summarizing energy savings targets, and expenditures by sector (for the six specified sectors). This table should enable/facilitate assessment of relative contributions of the sectors to savings targets, and relative cost-effectiveness.”¶

¶

- → TURN and ORA invite the PAs to propose a common table format for this information. We don't have anything specific in mind.¶
- → Additionally, include a brief description of the method used by the PA to estimate the costs presented in the C.8 Table. ¶

¶

Aggregated Category	Definition	Functional Category	Detailed Definition
Policy, Strategy, and Regulatory Reporting Compliance	Includes policy, strategy, compliance, audits and regulatory support	Planning & Compliance	DSM Goal Planning; lead legislative review/positioning; policy support on reg proceedings; portfolio optimization; end use-market strategy; DSM lead for PRP, DRP, ES; locational targeting; audit support; SOX certifications; developing control plans; developing action plans; continuous monitoring, inspections; program/product QA/QC; decision compliance oversight/tracking; data requests; policies & procedures
		Company Regulatory Support	Case management for EE proceedings
Program management	Includes labor, contracts, admin costs for program design, program implementation, product and channel management for all sectors	Program Management & Delivery	Market Segment & Locational Resource programs; Business Core & Finance Programs; Large Power DR Programs; Non-Res HVAC & Technical Services; Program Integration & Optimization; Residential EE & DR Programs (incl. Res HVAC QI); IQP & Economic Assistance Programs; Mass Market DR Programs; Education & Information Products & Services; Energy Leader Partnerships; Institutional & Federal Partnerships; REN Coordination; Strategic Plan Support; Energy/Water Program Mgt; Service Level Agreement Tracking
		Product Management	Manage end-to-end new products and services (P&S) intake, evaluation, and launch process; develop and facilitate P&S governance teams, coordination of all sub-process owners, stakeholders, and technical resources required to evaluate and launch new products; evaluate and launch new services and OOR opportunities; develop external partnerships & strategic alliances; work with various companies and associations to help advance standards, products, and tech.; work with external experts to help reduce SCE costs to deliver new prog. and products; develop and launch new customer technologies, products, services for residential and business customers; conduct customer pilots of new technologies and programs; lead customer field demonstrations of new technologies and products; align new P&S to savings programs/incentives; develop new programs/incentives in support of savings goals
		Channel Management	
		Contract Management	Budget forecasting, spend tracking, invoice processing, and contract management with vendors and suppliers; Regulatory support for ME&O activities
Engineering Services	Includes engineering, project management, and contracts associated with workpaper development and pre/post sales project technical reviews and design assistance	Custom project support	Management of Emerging Products projects; Customized reviews; LCR/RFO support; Ex-ante review management; Technical policy support; Technical assessments; Workpapers; Tool development; End use subject matter expertise
		Deemed workpapers	
		Project management	
Customer Application/Rebate and Incentive Processing	Costs associated with application management and rebate and incentive processing (deemed and custom)	Rebate & Application Processing	
Inspections	Costs associated with project inspections	Inspections	
Portfolio Analytics	Includes analytics support, including internal performance reporting and external reporting	Data analytics	Data development for programs, products and services; Standard and ad hoc data extracts for internal and external clients ; Database management; CPUC, CAISO reporting; Data reconciliation; E3 support ; Compliance filing support; Funding Oversight; ESPI support; Program Results Data & Performance
EM&V	EM&V expenditures	EM&V Studies	Program and product review; manage evaluation studies
		EM&V Forecasting	EE lead for LTPP and IEPR; market potential study; integration w/ procurement planning; CPUC Demand Analysis Working Group
ME&O	Costs associated with utility EE marketing; no statewide; focus on outsourced portion	Marketing	Customer Programs, Products, and Services Marketing; Digital Product Development; Digital Content & Optimization
		Customer insights	Voice of the Customer; Customer satisfaction study measurement and analysis (JD Power, SDS); Customer testing/research
Account Management / Sales	Costs associated with account rep energy efficiency sales functions	Account Management	
IT	IT project specific costs and regular O&M	IT - project specific	Projects and minor enhancements. Includes project management/business integration ("PMO/BID"). Excluded: maintenance (which SCE defines as when something goes down, normal batch processing, verifying interfaces, etc.).
		IT - regular O&M	
Call Center	Costs associated with call center staff fielding EE program questions	Call Center	
Incentives	Costs of rebate and incentive payments to customers	Incentives	

Functional Group	2016 EE Portfolio FTE	2018 EE Portfolio FTE
Policy, Strategy, and Regulatory Reporting Compliance		
Program Management		
Engineering Services		
Customer Application/Rebate/Incentive Processing		
Customer Project Inspections		
Portfolio Analytics		
EM&V		
ME&O		
Account Management / Sales		
IT		
Call Center		
Total		

||  
**A. → Narrative description of in-house departments/organizations supporting the PA's EE portfolio**

- ¶
- → Functions conducted by each department/organization¶
  - → Management structure and org chart¶
  - → Staffing needs by department/organization, including current and forecast for 2018, as well as a description of what changes are expected in the near term (2019-2020) or why it's impossible to predict beyond 2018, if that's the PA's position.¶
  - → Non-program functions currently performed by contractors (e.g. advisory consultants), as well as a description of what changes are expected in the near term (2019-2020) or why it's impossible to predict beyond 2018, if that's the PA's position.¶
  - → Anticipated drivers of in-house cost changes by department/organization¶
  - → Explanation of method for forecasting costs¶

¶  
 ¶  
**B. → Table showing PA EE headcount by department/organization**

- ¶
- → TURN and ORA like this example, taken from testimony PG&E's 2017 GRC addressing its Energy Procurement department. We would be looking for 2016 or 2017 "recorded" positions, depending on what's most appropriate for the PA, or both, if that provides the most clarity. For forecast years, we'd want at least 2018.¶

Sector	Cost Element	Functional Group	2016 EE Portfolio Expenditures (\$Million)	2018 EE Portfolio Budget (\$Million)
Residential	Labor(1)	Policy, Strategy, and Regulatory Reporting Compliance		
		Program Management		
		Engineering services		
		Customer Application/Rebate/Incentive Processing		
		Customer Project Inspections		
		Portfolio Analytics		
		ME&O (Local)		
		Account Management / Sales		
		IT		
		Call Center		
	Labor Total			
	Non-Labor	Third-Party Implementers Contracts		
		Local/Government Partnerships Contracts (3)		
		Other Contracts		
		Policy, Strategy, and Regulatory Reporting Compliance		
		Program Management		
		Engineering services		
		Customer Application/Rebate/Incentive Processing		
		Customer Project Inspections		
		Portfolio Analytics		
		ME&O (Local)		
		Account Management / Sales		
		IT		
		Call Center		
		Facilities		
		Incentives--Core Programs		
		Incentives--Third Party Program		
	Non-Labor Total			
Residential Total				
	Other (collected through GRC) (2)	Labor Overheads		

- Notes:
- (1) Labor costs are already loaded with (state loaders covered by EE)
  - (2) These costs are collected through GRC (state current applicable decision)
  - (3) LGP contracts that directly support the sector is included/not included in this item

**C. → Table showing costs by functional area of management structure¶**

- → Expenses broken out into labor, non-labor O&M (with contract labor identified)¶
- → Identify any capital costs¶

**B. → Attachment A, Question C.9¶**

“Using a common budget template developed in consultation with interested stakeholders (hopefully agreed upon at a “meet and confer” session), display how much of each year’s budget each PA anticipates spending “in-house” (e.g., for administration, non-outsourced direct implementation, other non-incentive costs, marketing), by sector and by cross-cutting program.”¶

- → TURN and ORA invite the PAs to propose a common table format for this information. We don’t have anything specific in mind.¶
- → Additionally, include a brief description of the method used by the PA to estimate the costs presented in the C.9 Table.¶

**Appendix B**

**Supporting Information – Request I.A.**

# SCE Energy Efficiency Organization Charts

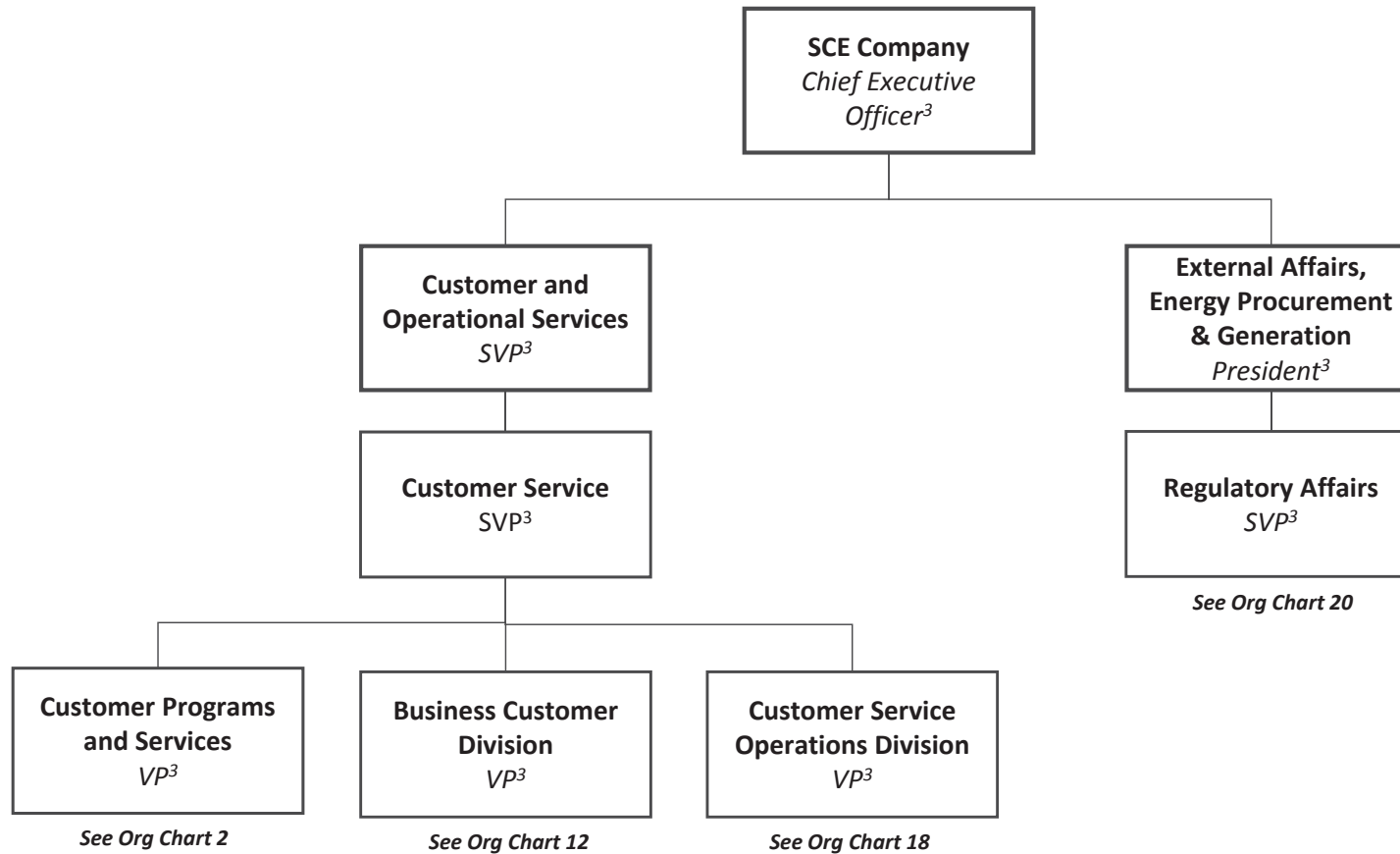
Supplemental Information Provided In Support of Application 17-01-013

Org Chart #	Organization Chart Description
1	Southern California Edison Company
2	Customer Programs and Services
3	Customer Programs and Services – DSM Program Management
4	Customer Programs and Services – DSM Program Management – Business DSM Programs
5	Customer Programs and Services – DSM Program Management – Residential DSM Programs
6	Customer Programs and Services – DSM Program Management – Public Sector DSM Programs
7	Customer Programs and Services – DSM Program Management – Engineering Services
8	Customer Programs and Services – DSM Program Management – DSM Operational & Technical Support
9	Customer Programs and Services – Product Development and Division Management
10	Customer Programs and Services – Customer Engagement
11	Customer Programs and Services – Information Governance & Analytics, Measurement & Evaluation
12	Business Customer Division
13	Business Customer Division – Commercial and Industrial
14	Business Customer Division – Government, Institution, Agriculture, & Water
15	Business Customer Division – Energy Analysis & Customer Outreach
16	Business Customer Division – Strategic Customer Solutions
17	Business Customer Division – BCD Operations
18	Customer Service Operations Division
19	Customer Service Operations Division – Customer Contact Center
20	Regulatory Affairs

# Southern California Edison Company

Organization Chart Headcount: 526<sup>1,2</sup>

SCE EE Organization Chart 1  
Supplemental Information Provided In  
Support of Application 17-01-013



**Note 1:** Data current as of first quarter 2017. Excludes contingent workers, vacancies, employees on leave of absence, interns, and service maintenance providers.

**Note 2:** SCE's entire response to TURN/ORR Supplemental Budget Showing includes three definitions involving employee counts: (1) Organization Chart Headcount, (2) Full-Time Equivalents (FTEs) and (3) headcounts as defined by ORR in data request ORR-A1701013-SCE003 (May 22, 2017). This organization chart uses "Organizational Chart Headcount" which includes any individuals that charged Energy Efficiency Balancing Account in first quarter 2017. FTEs are a unit of measure showing how many employees SCE has assuming all employees work a full-time schedule. Headcounts as defined by ORR-A1701013-SCE003 assume that "[i]ndividual[s] that charge to multiple functional categories should be counted once in each functional category".

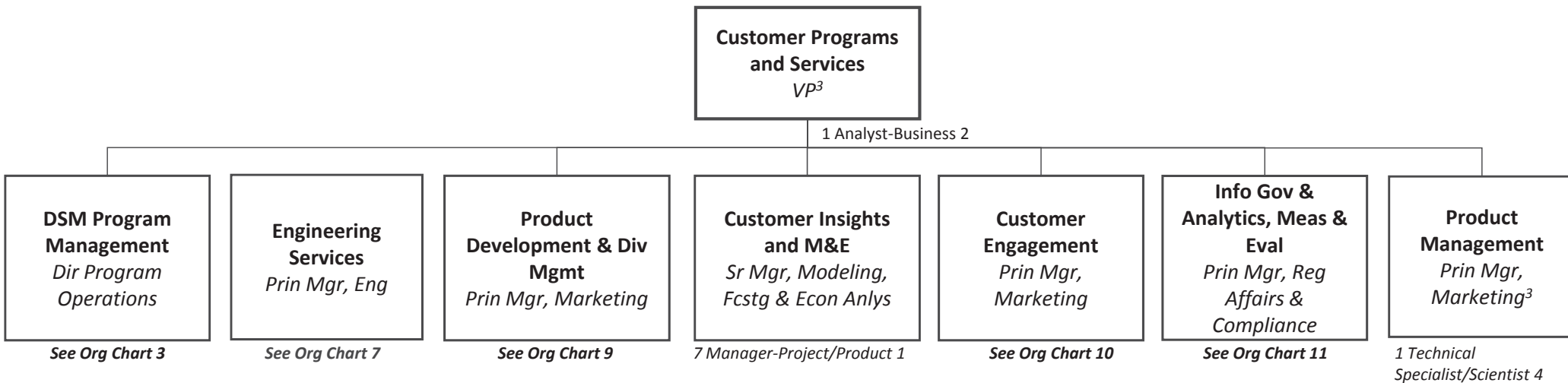
**Note 3:** Individual did not charge Energy Efficiency Balancing Account and has been excluded from "Organization Chart Headcount".



# Customer Programs & Services

SCE EE Organization Chart 2  
 Supplemental Information Provided In  
 Support of Application 17-01-013

Summary Function Description: Manages the DSM Program Management, Business DSM Programs, Product Development and Division Management, Customer Insights and Measurement & Evaluation, Customer Engagement, and Information Governance & Analytics, Measurement and Evaluation groups.  
Organization Chart Headcount: 227<sup>1,2</sup>



Note 1: Data current as of first quarter 2017. Excludes contingent workers, vacancies, employees on leave of absence, interns, and service maintenance providers.

Note 2: SCE's entire response to TURN/ORAs Supplemental Budget Showing includes three definitions involving employee counts: (1) Organization Chart Headcount, (2) Full-Time Equivalents (FTEs) and (3) headcounts as defined by ORA in data request ORA-A1701013-SCE003 (May 22, 2017). This organization chart uses "Organizational Chart Headcount" which includes any individuals that charged Energy Efficiency Balancing Account in first quarter 2017. FTEs are a unit of measure showing how many employees SCE has assuming all employees work a full-time schedule. Headcounts as defined by ORA-A1701013-SCE003 assume that "[i]ndividual[s] that charge to multiple functional categories should be counted once in each functional category".

Note 3: Individual did not charge Energy Efficiency Balancing Account and has been excluded from "Organization Chart Headcount".

# Customer Programs & Services

## DSM Program Management

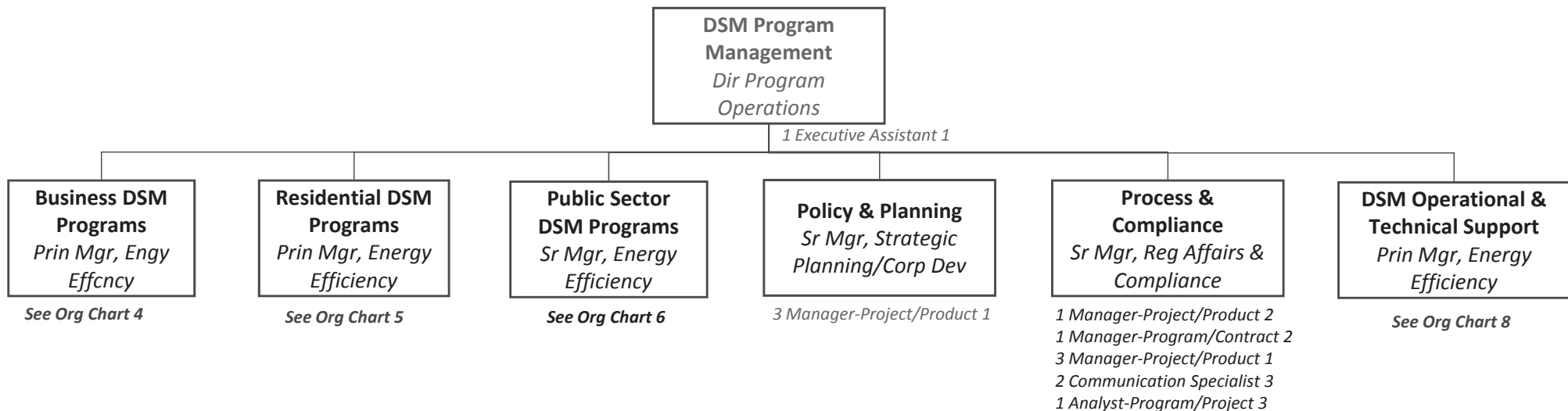
SCE EE Organization Chart 3  
 Supplemental Information Provided In  
 Support of Application 17-01-013

Functional Category: Program Management and Delivery

Detailed Definition: Market Segment & Locational Resource programs; Business Core & Finance Programs; Large Power DR Programs; Non-Res HVAC & Technical Services; Program Integration & Optimization; Residential EE & DR Programs (incl. Res HVAC QI); IQP & Economic Assistance Programs; Mass Market DR Programs; Education & Information Products & Services; Energy Leader Partnerships; Institutional & Federal Partnerships; REN Coordination; Strategic Plan Support; Energy/Water Program Mgt; Service Level Agreement Tracking

Summary Function Description: Provides DSM program management, including program planning, design, implementation, compliance, reporting and technical operations/support.

Organization Chart Headcount: 116<sup>1,2</sup>



Note 1: Data current as of first quarter 2017. Excludes contingent workers, vacancies, employees on leave of absence, interns, and service maintenance providers.

Note 2: SCE's entire response to TURN/ORR Supplemental Budget Showing includes three definitions involving employee counts: (1) Organization Chart Headcount, (2) Full-Time Equivalents (FTEs) and (3) headcounts as defined by ORR in data request ORR-A1701013-SCE003 (May 22, 2017). This organization chart uses "Organizational Chart Headcount" which includes any individuals that charged Energy Efficiency Balancing Account in first quarter 2017. FTEs are a unit of measure showing how many employees SCE has assuming all employees work a full-time schedule. Headcounts as defined by ORR-A1701013-SCE003 assume that "[I]ndividual[s] that charge to multiple functional categories should be counted once in each functional category".

# Customer Programs & Services

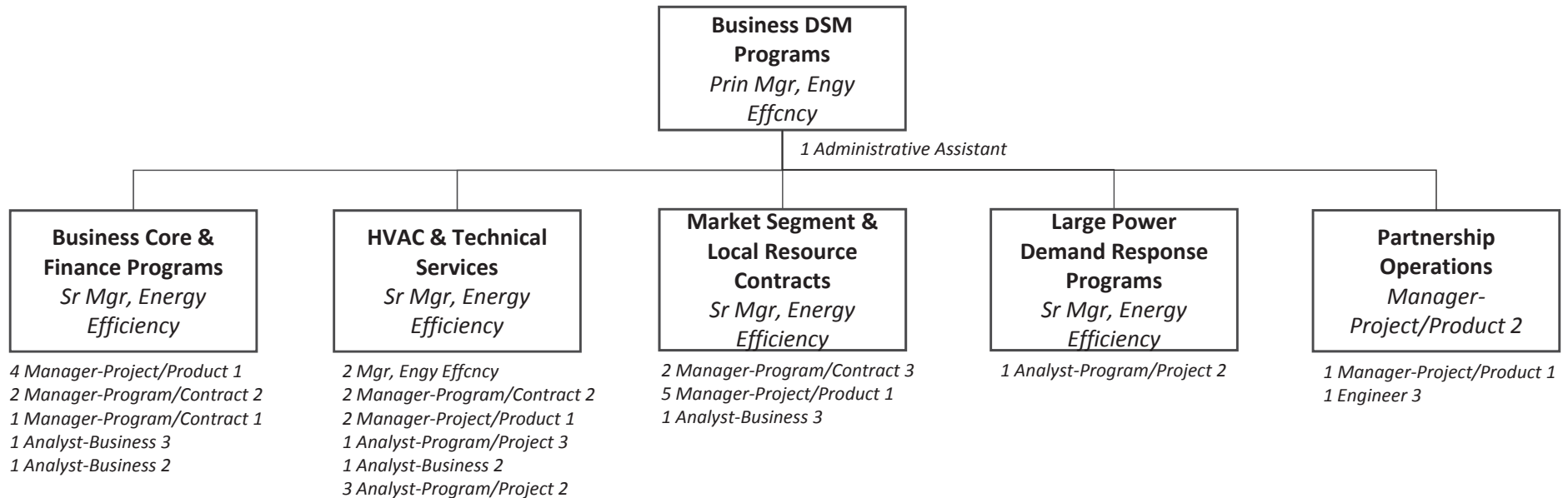
## Business DSM Programs

Functional Category: Program Management and Delivery

Detailed Definition: Market Segment & Locational Resource programs; Business Core & Finance Programs; Large Power DR Programs; Non-Res HVAC & Technical Services; Program Integration & Optimization; Residential EE & DR Programs (incl. Res HVAC QI); IQP & Economic Assistance Programs; Mass Market DR Programs; Education & Information Products & Services; Energy Leader Partnerships; Institutional & Federal Partnerships; REN Coordination; Strategic Plan Support; Energy/Water Program Mgt; Service Level Agreement Tracking

Summary Function Description: Manages and operates SCE’s business EE programs, including SCE’s Core and Finance Programs, HVAC & Technical Services, and Market Segment & Local Resource Contracts.

Organization Chart Headcount: 38<sup>1, 2</sup>



Note 1: Data current as of first quarter 2017. Excludes contingent workers, vacancies, employees on leave of absence, interns, and service maintenance providers.

Note 2: SCE’s entire response to TURN/ORR Supplemental Budget Showing includes three definitions involving employee counts: (1) Organization Chart Headcount, (2) Full-Time Equivalents (FTEs) and (3) headcounts as defined by ORR in data request ORR-A1701013-SCE003 (May 22, 2017). This organization chart uses “Organizational Chart Headcount” which includes any individuals that charged Energy Efficiency Balancing Account in first quarter 2017. FTEs are a unit of measure showing how many employees SCE has assuming all employees work a full-time schedule. Headcounts as defined by ORR-A1701013-SCE003 assume that “[I]ndividual[s] that charge to multiple functional categories should be counted once in each functional category”.

# Customer Programs & Services

## Residential DSM Programs

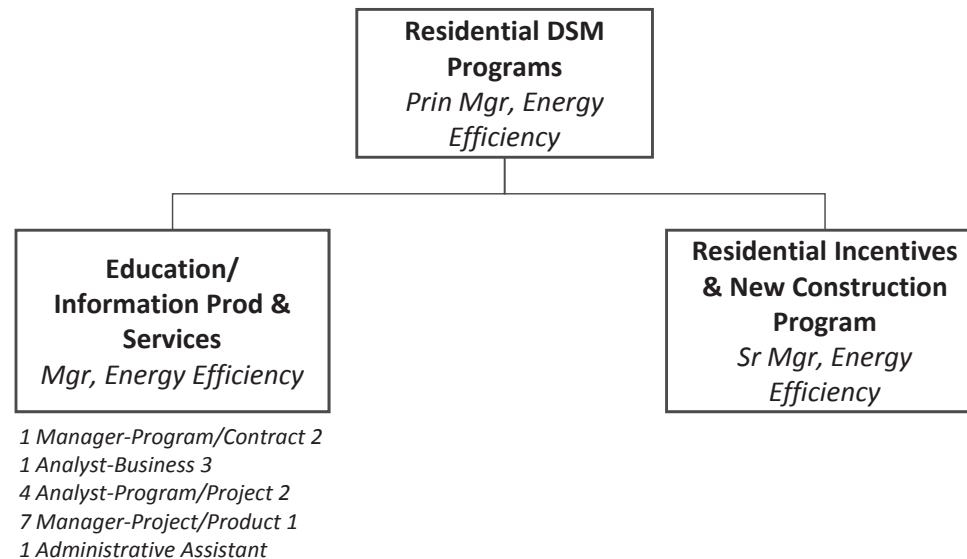
SCE EE Organization Chart 5  
Supplemental Information Provided In  
Support of Application 17-01-013

Functional Category: Program Management and Delivery

Detailed Definition: Market Segment & Locational Resource programs; Business Core & Finance Programs; Large Power DR Programs; Non-Res HVAC & Technical Services; Program Integration & Optimization; Residential EE & DR Programs (incl. Res HVAC QI); IQP & Economic Assistance Programs; Mass Market DR Programs; Education & Information Products & Services; Energy Leader Partnerships; Institutional & Federal Partnerships; REN Coordination; Strategic Plan Support; Energy/Water Program Mgt; Service Level Agreement Tracking

Summary Function Description: Manages Education and Information Products & Services and Residential Incentives & New Construction programs

Organization Chart Headcount: 17



Note 1: Data current as of first quarter 2017. Excludes contingent workers, vacancies, employees on leave of absence, interns, and service maintenance providers.

Note 2: SCE's entire response to TURN/ORAs Supplemental Budget Showing includes three definitions involving employee counts: (1) Organization Chart Headcount, (2) Full-Time Equivalents (FTEs) and (3) headcounts as defined by ORA in data request ORA-A1701013-SCE003 (May 22, 2017). This organization chart uses "Organizational Chart Headcount" which includes any individuals that charged Energy Efficiency Balancing Account in first quarter 2017. FTEs are a unit of measure showing how many employees SCE has assuming all employees work a full-time schedule. Headcounts as defined by ORA-A1701013-SCE003 assume that "[I]ndividual[s] that charge to multiple functional categories should be counted once in each functional category".

Note 3: Individual did not charge Energy Efficiency Balancing Account and has been excluded from "Organization Chart Headcount".

# Customer Programs & Services

## Public Sector DSM Programs

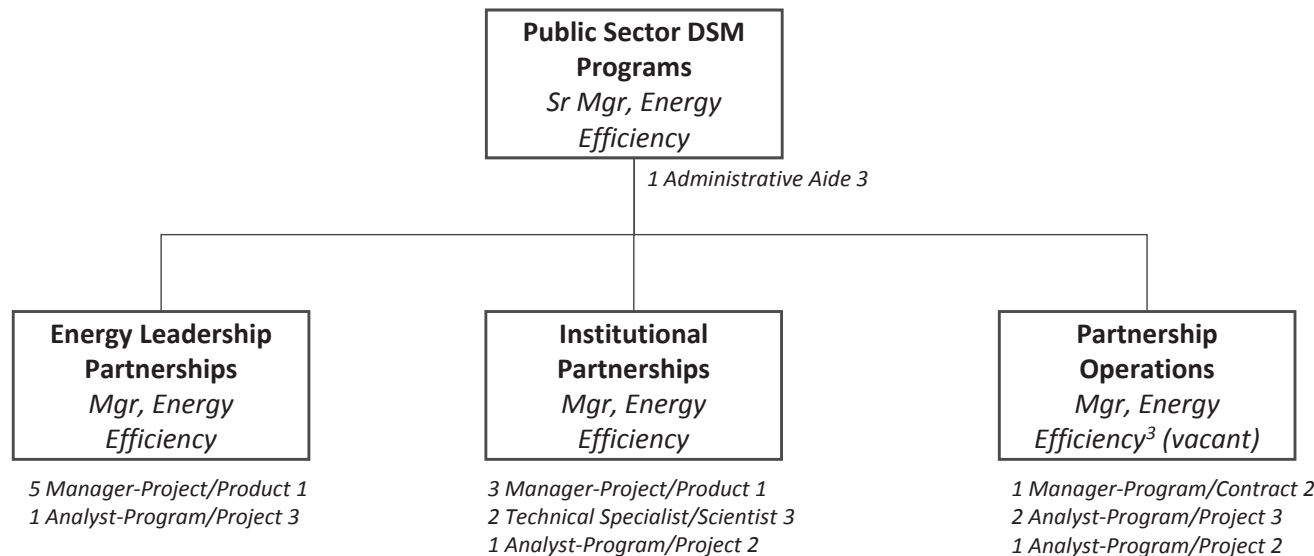
SCE EE Organization Chart 6  
 Supplemental Information Provided In  
 Support of Application 17-01-013

Functional Category: Program Management and Delivery

Detailed Definition: Market Segment & Locational Resource programs; Business Core & Finance Programs; Large Power DR Programs; Non-Res HVAC & Technical Services; Program Integration & Optimization; Residential EE & DR Programs (incl. Res HVAC QI); IQP & Economic Assistance Programs; Mass Market DR Programs; Education & Information Products & Services; Energy Leader Partnerships; Institutional & Federal Partnerships; REN Coordination; Strategic Plan Support; Energy/Water Program Mgt; Service Level Agreement Tracking

Summary Function Description: Manages and operates SCE’s energy leadership and institutional partnership programs.

Organization Chart Headcount: 20<sup>1, 2</sup>



Note 1: Data current as of first quarter 2017. Excludes contingent workers, vacancies, employees on leave of absence, interns, and service maintenance providers.

Note 2: SCE’s entire response to TURN/ORAs Supplemental Budget Showing includes three definitions involving employee counts: (1) Organization Chart Headcount, (2) Full-Time Equivalents (FTEs) and (3) headcounts as defined by ORA in data request ORA-A1701013-SCE003 (May 22, 2017). This organization chart uses “Organizational Chart Headcount” which includes any individuals that charged Energy Efficiency Balancing Account in first quarter 2017. FTEs are a unit of measure showing how many employees SCE has assuming all employees work a full-time schedule. Headcounts as defined by ORA-A1701013-SCE003 assume that “[I]ndividual[s] that charge to multiple functional categories should be counted once in each functional category”.

# Customer Programs & Services

## Engineering Services

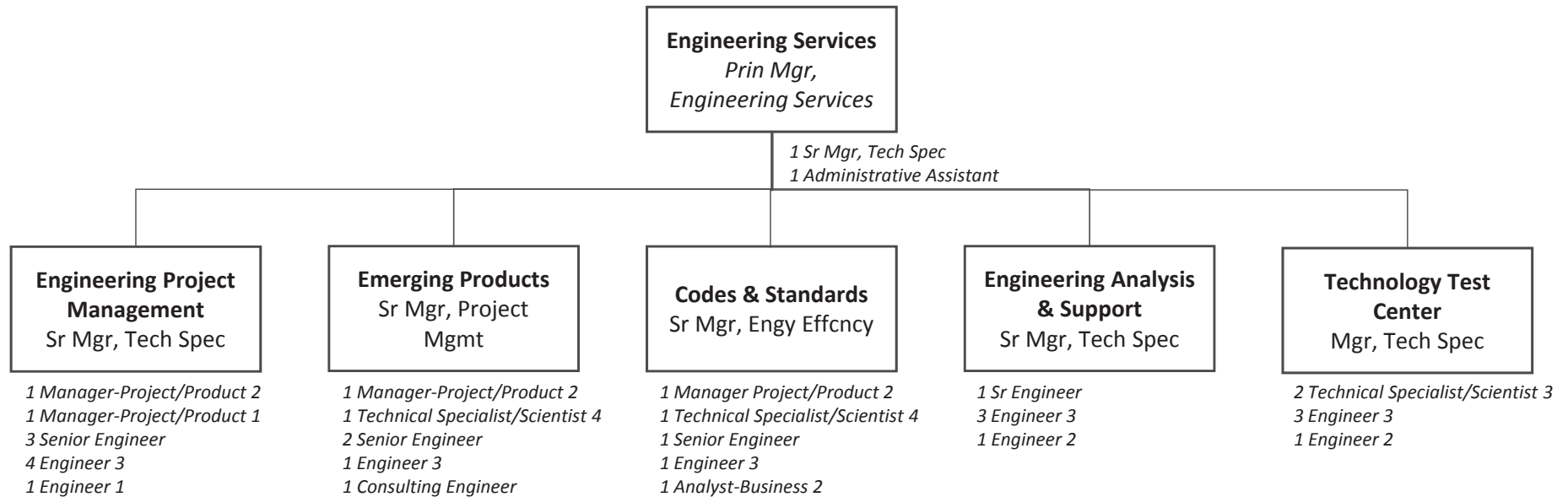
SCE EE Organization Chart 7  
 Supplemental Information Provided In  
 Support of Application 17-01-013

Functional Category: Program Management and Delivery

Detailed Definition: Market Segment & Locational Resource programs; Business Core & Finance Programs; Large Power DR Programs; Non-Res HVAC & Technical Services; Program Integration & Optimization; Residential EE & DR Programs (incl. Res HVAC QI); IQP & Economic Assistance Programs; Mass Market DR Programs; Education & Information Products & Services; Energy Leader Partnerships; Institutional & Federal Partnerships; REN Coordination; Strategic Plan Support; Energy/Water Program Mgt; Service Level Agreement Tracking

Summary Function Description: Manages and operates SCE’s business EE programs, including SCE’s Core and Finance Programs, HVAC & Technical Services, and Market Segment & Local Resource Contracts.

Organization Chart Headcount: 40<sup>1, 2</sup>



Note 1: Data current as of first quarter 2017. Excludes contingent workers, vacancies, employees on leave of absence, interns, and service maintenance providers.

Note 2: SCE’s entire response to TURN/ORR Supplemental Budget Showing includes three definitions involving employee counts: (1) Organization Chart Headcount, (2) Full-Time Equivalents (FTEs) and (3) headcounts as defined by ORR in data request ORR-A1701013-SCE003 (May 22, 2017). This organization chart uses “Organizational Chart Headcount” which includes any individuals that charged Energy Efficiency Balancing Account in first quarter 2017. FTEs are a unit of measure showing how many employees SCE has assuming all employees work a full-time schedule. Headcounts as defined by ORR-A1701013-SCE003 assume that “[I]ndividual[s] that charge to multiple functional categories should be counted once in each functional category”.

# Customer Programs & Services

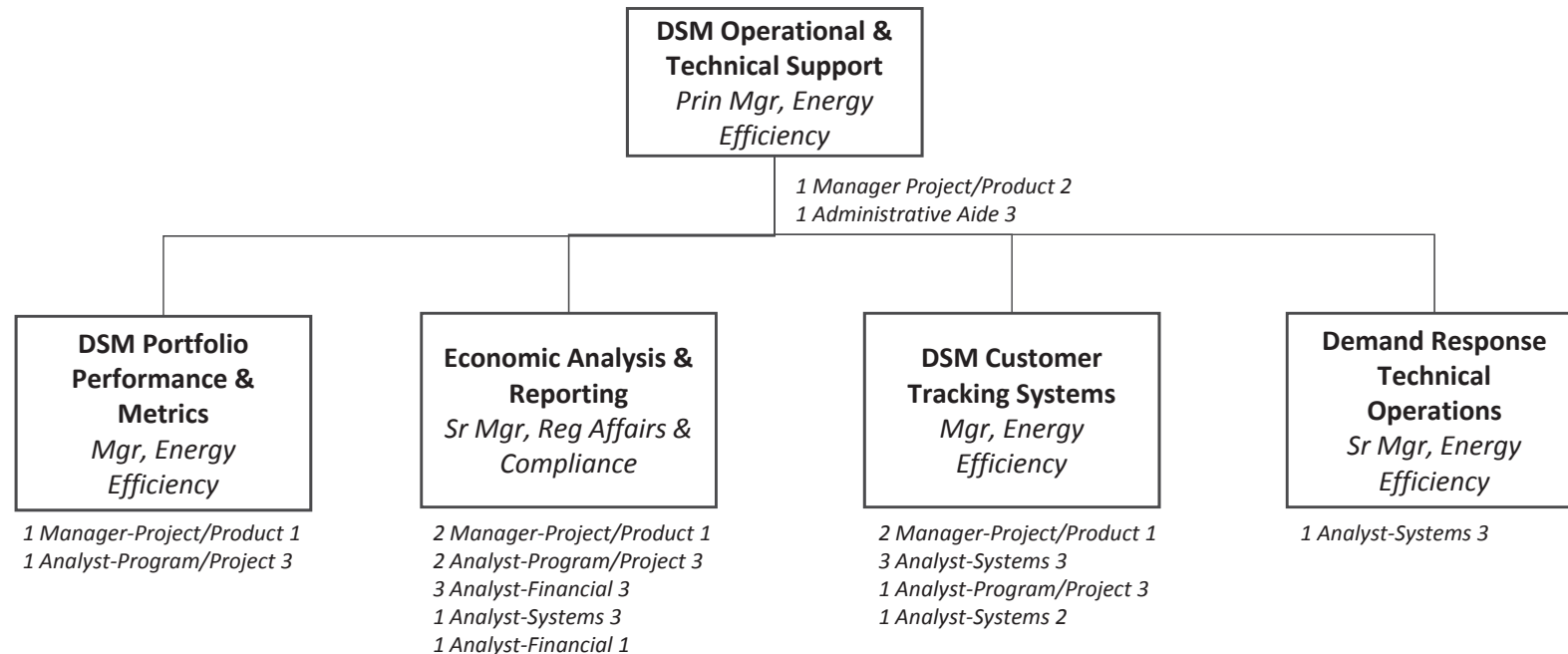
## DSM Operational & Technical Support

Functional Category: Program Management and Delivery

Detailed Definition: Market Segment & Locational Resource programs; Business Core & Finance Programs; Large Power DR Programs; Non-Res HVAC & Technical Services; Program Integration & Optimization; Residential EE & DR Programs (incl. Res HVAC QI); IQP & Economic Assistance Programs; Mass Market DR Programs; Education & Information Products & Services; Energy Leader Partnerships; Institutional & Federal Partnerships; REN Coordination; Strategic Plan Support; Energy/Water Program Mgt; Service Level Agreement Tracking

Summary Function Description: Manages DSM portfolio performance and metrics, performs economic analyses and reporting, and operates DSM customer tracking systems

Organization Chart Headcount: 26



# Customer Programs & Services

## Product Development and Division Management

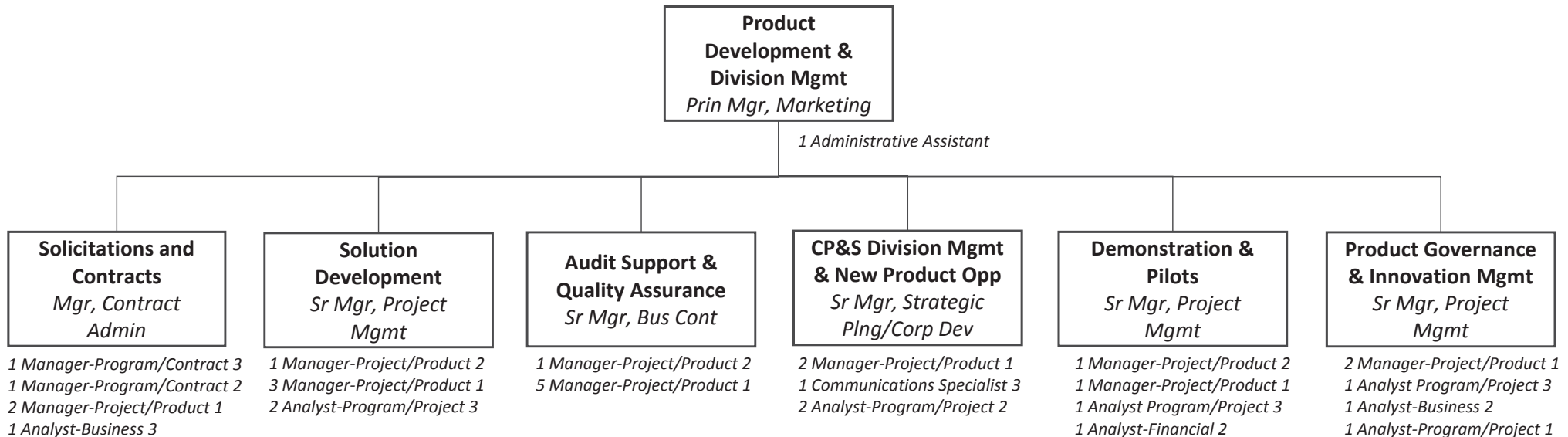
SCE EE Organization Chart 9  
 Supplemental Information Provided In  
 Support of Application 17-01-013

Functional Category: Product Management

Detailed Definition: Manage end-to-end new products and services (P&S) intake, evaluation, and launch process; develop and facilitate P&S governance teams, coordination of all sub-process owners, stakeholders, and technical resources required to evaluate and launch new products; evaluate and launch new services and OOR opportunities; develop external partnerships & strategic alliances; work with various companies and associations to help advance standards, products, and tech.; work with external experts to help reduce SCE costs to deliver new prog. and products; develop and launch new customer technologies, products, services for residential and business customers; conduct customer pilots of new technologies and programs; lead customer field demonstrations of new technologies and products; align new P&S to savings programs/incentives; develop new programs/incentives in support of savings goals

Summary Function Description: Manages EE, DR, DG, and non-DSM product development, including solicitations and contracts, solutions development, new product opportunities, demonstration & pilots, and product governance & innovation management.

Organization Chart Headcount: 39<sup>1, 2</sup>



Note 1: Data current as of first quarter 2017. Excludes contingent workers, vacancies, employees on leave of absence, interns, and service maintenance providers.

Note 2: SCE's entire response to TURN/ORR Supplemental Budget Showing includes three definitions involving employee counts: (1) Organization Chart Headcount, (2) Full-Time Equivalents (FTEs) and (3) headcounts as defined by ORR in data request ORR-A1701013-SCE003 (May 22, 2017). This organization chart uses "Organizational Chart Headcount" which includes any individuals that charged Energy Efficiency Balancing Account in first quarter 2017. FTEs are a unit of measure showing how many employees SCE has assuming all employees work a full-time schedule. Headcounts as defined by ORR-A1701013-SCE003 assume that "[I]ndividual[s] that charge to multiple functional categories should be counted once in each functional category".



# Customer Programs & Services

## Customer Engagement

SCE EE Organization Chart 10

Supplemental Information Provided In

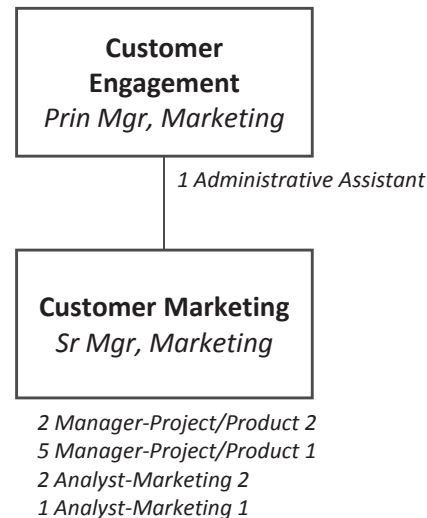
Support of Application 17-01-013

Functional Category: Marketing

Detailed Definition: Customer Programs, Products, and Services Marketing; Digital Product Development; Digital Content & Optimization

Summary Function Description: Engages customers with information related to EE programs using a mix of delivery channels and marketing communication campaigns.

Organization Chart Headcount: 13<sup>1,2</sup>



Note 1: Data current as of first quarter 2017. Excludes contingent workers, vacancies, employees on leave of absence, interns, and service maintenance providers.

Note 2: SCE's entire response to TURN/ORAs Supplemental Budget Showing includes three definitions involving employee counts: (1) Organization Chart Headcount, (2) Full-Time Equivalents (FTEs) and (3) headcounts as defined by ORA in data request ORA-A1701013-SCE003 (May 22, 2017). This organization chart uses "Organizational Chart Headcount" which includes any individuals that charged Energy Efficiency Balancing Account in first quarter 2017. FTEs are a unit of measure showing how many employees SCE has assuming all employees work a full-time schedule. Headcounts as defined by ORA-A1701013-SCE003 assume that "[I]ndividual[s] that charge to multiple functional categories should be counted once in each functional category".

# Customer Programs & Services

## Information Governance & Analytics, Measurement & Evaluation

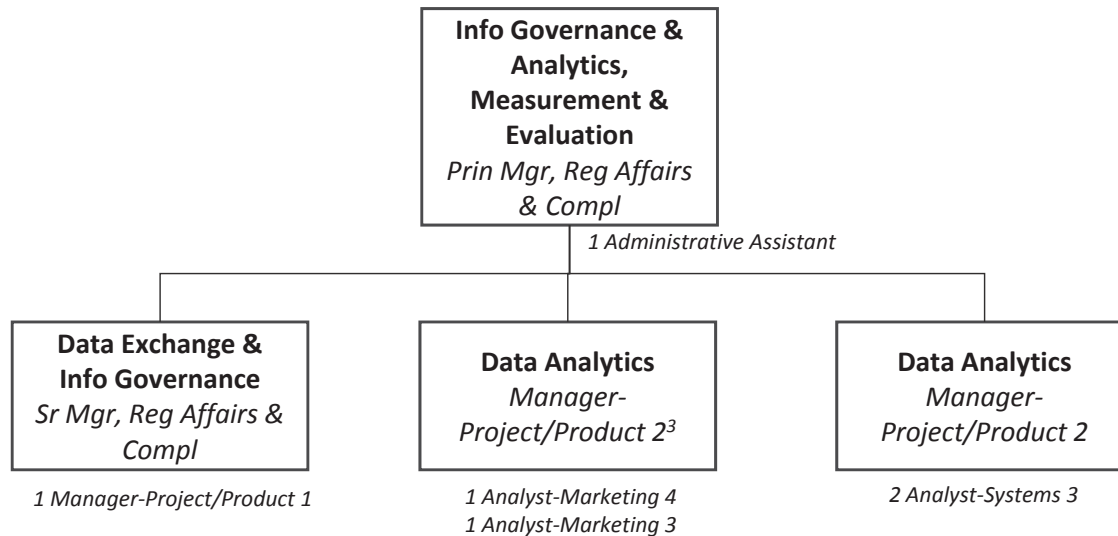
SCE EE Organization Chart 11  
 Supplemental Information Provided In  
 Support of Application 17-01-013

Functional Category: Data Analytics

Detailed Definition: Data development for programs, products and services; Standard and ad hoc data extracts for internal and external clients ; Database management; CPUC, CAISO reporting; Data reconciliation; E3 support ; Compliance filing support; Funding Oversight; ESPI support; Program Results Data & Performance

Summary Function Description: Manages information governance, analytics, measurement and evaluation.

Organization Chart Headcount: 9<sup>1,2</sup>



Note 1: Data current as of first quarter 2017. Excludes contingent workers, vacancies, employees on leave of absence, interns, and service maintenance providers.

Note 2: SCE’s entire response to TURN/ORR Supplemental Budget Showing includes three definitions involving employee counts: (1) Organization Chart Headcount, (2) Full-Time Equivalents (FTEs) and (3) headcounts as defined by ORR in data request ORR-A1701013-SCE003 (May 22, 2017). This organization chart uses “Organizational Chart Headcount” which includes any individuals that charged Energy Efficiency Balancing Account in first quarter 2017. FTEs are a unit of measure showing how many employees SCE has assuming all employees work a full-time schedule. Headcounts as defined by ORR-A1701013-SCE003 assume that “[i]ndividual[s] that charge to multiple functional categories should be counted once in each functional category”.

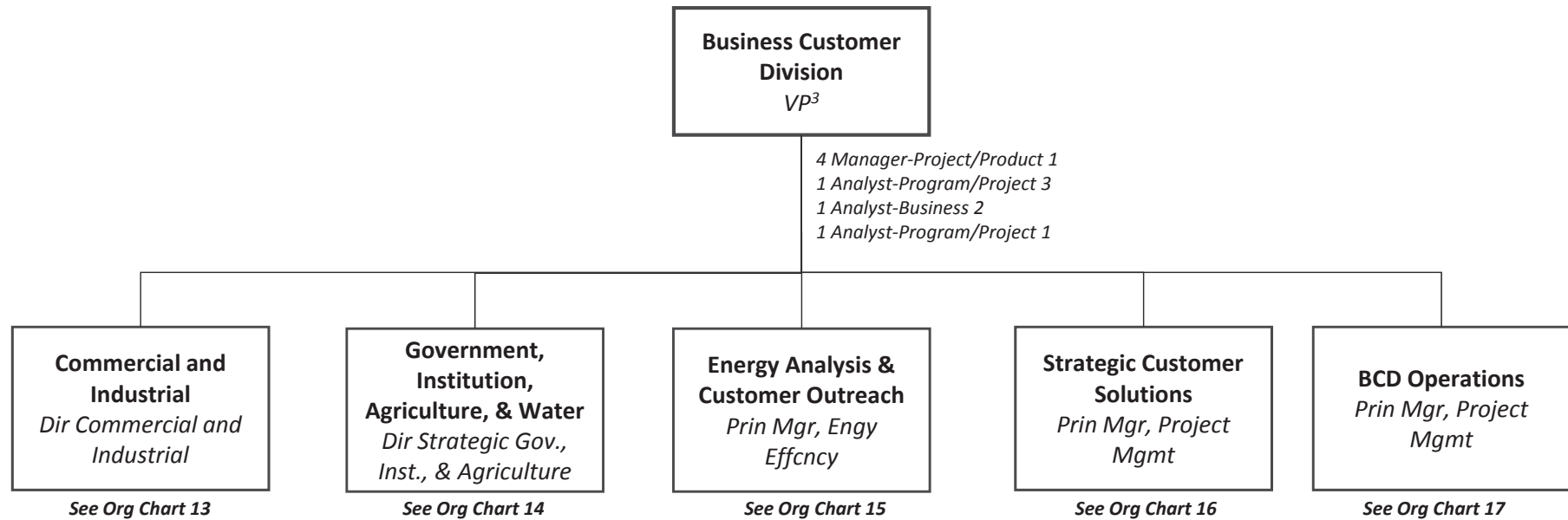
Note 3: Individual did not charge Energy Efficiency Balancing Account and has been excluded from “Organization Chart Headcount”.

# Business Customer Division

SCE EE Organization Chart 12  
 Supplemental Information Provided In  
 Support of Application 17-01-013

Summary Function Description: Provides account management and other support to SCE’s business customers, meeting their needs by leveraging strategic relationships to safely delivery quality programs, provide exceptional customer engagement and enhance business value.

Organization Chart Headcount: 204<sup>1,2</sup>



Note 1: Data current as of first quarter 2017. Excludes contingent workers, vacancies, employees on leave of absence, interns, and service maintenance providers.

Note 2: SCE’s entire response to TURN/ORAs Supplemental Budget Showing includes three definitions involving employee counts: (1) Organization Chart Headcount, (2) Full-Time Equivalents (FTEs) and (3) headcounts as defined by ORA in data request ORA-A1701013-SCE003 (May 22, 2017). This organization chart uses “Organizational Chart Headcount” which includes any individuals that charged Energy Efficiency Balancing Account in first quarter 2017. FTEs are a unit of measure showing how many employees SCE has assuming all employees work a full-time schedule. Headcounts as defined by ORA-A1701013-SCE003 assume that “[I]ndividual[s] that charge to multiple functional categories should be counted once in each functional category”.

Note 3: Individual did not charge Energy Efficiency Balancing Account and has been excluded from “Organization Chart Headcount”.

# Business Customer Division

## Commercial and Industrial

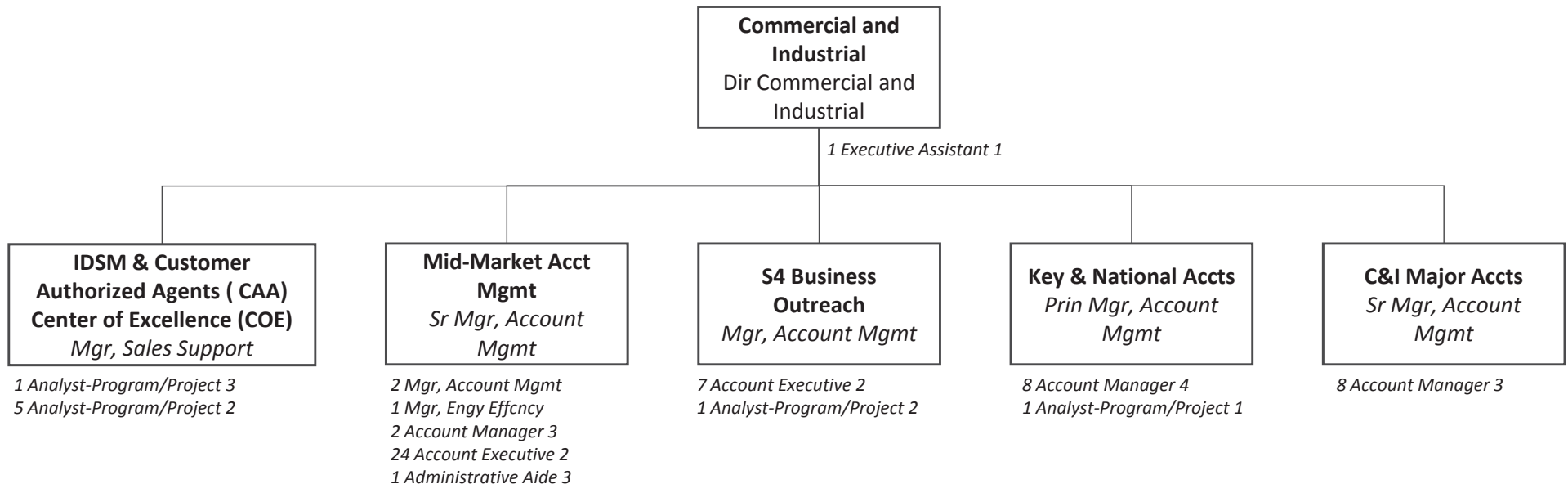
SCE EE Organization Chart 13  
 Supplemental Information Provided In  
 Support of Application 17-01-013

Functional Category: Account Management

Detailed Definition: Represents the Company by delivering consultative sales and marketing of electric energy, services, and products to ensure the attainment of revenue goals. Consults with customers to assess their business needs and requirements, and identifies value added Company products, services, and/or innovative solutions to address their needs.

Summary Function Description: Provides client account management support to commercial and industrial (C&I) customers, including engaging with customers by serving as their Trusted Energy Advisors and advocate. The C&I segment assists this diverse group of customers with energy efficiency, demand response, and distributed energy resource offerings, while also providing value through a variety of customer care issues.

Organization Chart Headcount: 68<sup>1,2</sup>



Note 1: Data current as of first quarter 2017. Excludes contingent workers, vacancies, employees on leave of absence, interns, and service maintenance providers.

Note 2: SCE's entire response to TURN/ORR Supplemental Budget Showing includes three definitions involving employee counts: (1) Organization Chart Headcount, (2) Full-Time Equivalents (FTEs) and (3) headcounts as defined by ORR in data request ORR-A1701013-SCE003 (May 22, 2017). This organization chart uses "Organizational Chart Headcount" which includes any individuals that charged Energy Efficiency Balancing Account in first quarter 2017. FTEs are a unit of measure showing how many employees SCE has assuming all employees work a full-time schedule. Headcounts as defined by ORR-A1701013-SCE003 assume that "[I]ndividual[s] that charge to multiple functional categories should be counted once in each functional category".

# Business Customer Division

## Government, Institution, Agriculture, & Water

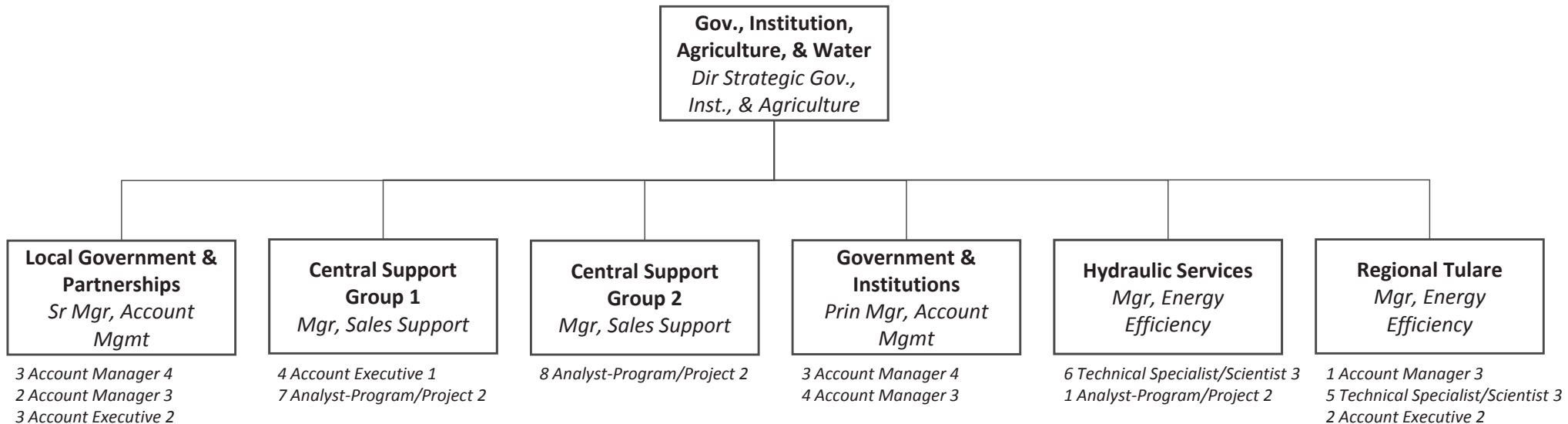
SCE EE Organization Chart 14  
 Supplemental Information Provided In  
 Support of Application 17-01-013

Functional Category: Account Management

Detailed Definition: Represents the Company by delivering consultative sales and marketing of electric energy, services, and products to ensure the attainment of revenue goals. Consults with customers to assess their business needs and requirements, and identifies value added Company products, services, and/or innovative solutions to address their needs.

Summary Function Description: Provides client account management support to government, institutions, agriculture and water (GIA&W) customers, including delivering cost effective and creative customer solutions to exceed expectations for delivering programs and customer care. The GIA&W segment assists this diverse, complex, and political customer base with emerging issues and technologies.

Organization Chart Headcount: 56.<sup>2</sup>



Note 1: Data current as of first quarter 2017. Excludes contingent workers, vacancies, employees on leave of absence, interns, and service maintenance providers.

Note 2: SCE’s entire response to TURN/ORR Supplemental Budget Showing includes three definitions involving employee counts: (1) Organization Chart Headcount, (2) Full-Time Equivalents (FTEs) and (3) headcounts as defined by ORR in data request ORR-A1701013-SCE003 (May 22, 2017). This organization chart uses “Organizational Chart Headcount” which includes any individuals that charged Energy Efficiency Balancing Account in first quarter 2017. FTEs are a unit of measure showing how many employees SCE has assuming all employees work a full-time schedule. Headcounts as defined by ORR-A1701013-SCE003 assume that “[I]ndividual[s] that charge to multiple functional categories should be counted once in each functional category”.

# Business Customer Division

## Energy Analysis & Customer Outreach

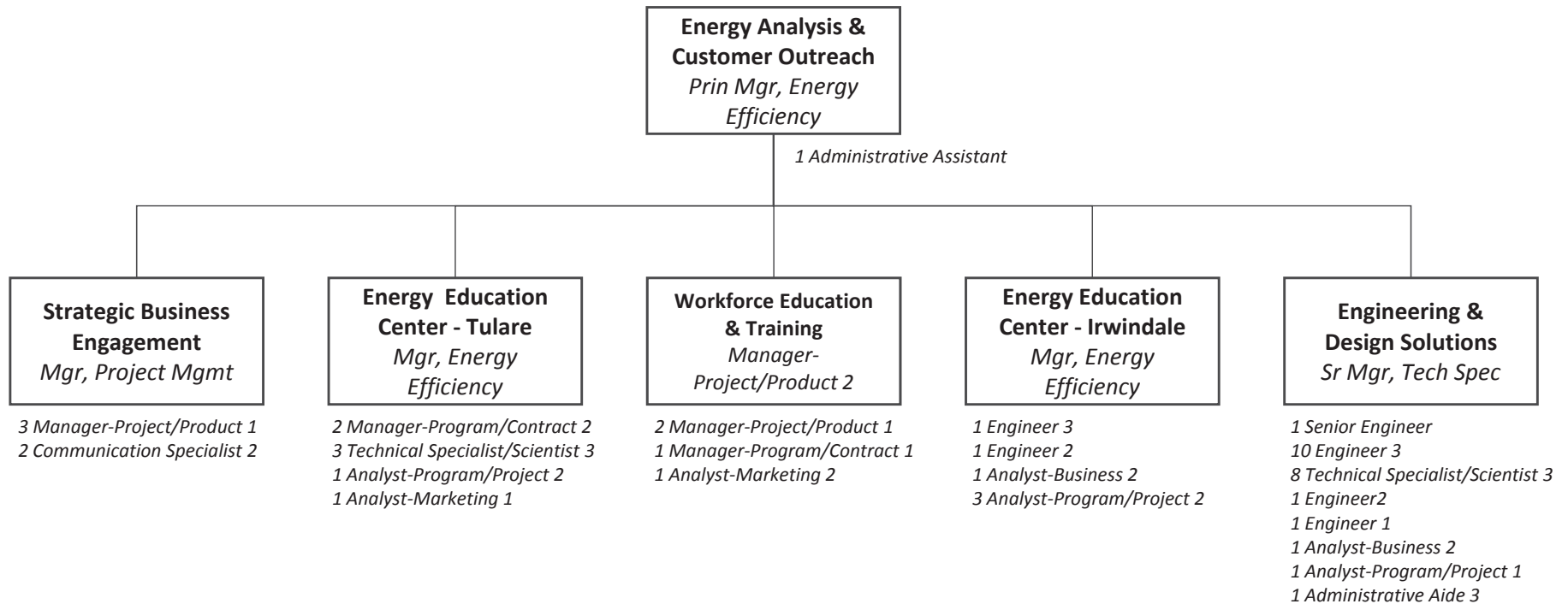
SCE EE Organization Chart 15  
 Supplemental Information Provided In  
 Support of Application 17-01-013

Functional Category: Marketing

Detailed Definition: Customer Programs, Products, and Services Marketing; Digital Product Development; Digital Content & Optimization

Summary Function Description: Energy Analysis and Customer Outreach (EA&CO) provides cutting-edge solutions to help customers make energy-related decisions that save energy and money, while helping create a smarter, safer, and reliable energy future. Provides integrated demand-side management Engineering & Design Solutions; Workforce Education and Training through instruction of energy related workshops and seminars, and utilization of displays and tools offered through our Energy Education Centers; and Outreach through Strategic Business Engagement events.

Organization Chart Headcount: 53<sup>1,2</sup>



Note 1: Data current as of first quarter 2017. Excludes contingent workers, vacancies, employees on leave of absence, interns, and service maintenance providers.

Note 2: SCE’s entire response to TURN/ORAs Supplemental Budget Showing includes three definitions involving employee counts: (1) Organization Chart Headcount, (2) Full-Time Equivalents (FTEs) and (3) headcounts as defined by ORA in data request ORA-A1701013-SCE003 (May 22, 2017). This organization chart uses “Organizational Chart Headcount” which includes any individuals that charged Energy Efficiency Balancing Account in first quarter 2017. FTEs are a unit of measure showing how many employees SCE has assuming all employees work a full-time schedule. Headcounts as defined by ORA-A1701013-SCE003 assume that “[I]ndividual[s] that charge to multiple functional categories should be counted once in each functional category”.

# Business Customer Division

## Strategic Customer Solutions

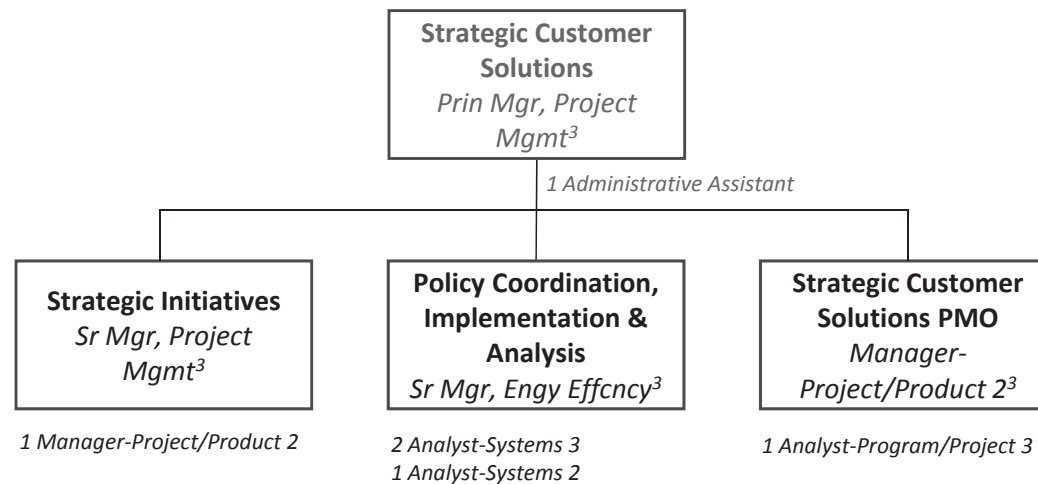
SCE EE Organization Chart 16  
 Supplemental Information Provided In  
 Support of Application 17-01-013

Functional Category: Program Management & Delivery

Detailed Definition: Market Segment & Locational Resource programs; Business Core & Finance Programs; Large Power DR Programs; Non-Res HVAC & Technical Services; Program Integration & Optimization; Residential EE & DR Programs (incl. Res HVAC QI); IQP & Economic Assistance Programs; Mass Market DR Programs; Education & Information Products & Services; Energy Leader Partnerships; Institutional & Federal Partnerships; REN Coordination; Strategic Plan Support; Energy/Water Program Mgt; Service Level Agreement Tracking

Summary Function Description: Provides strategic customer solutions, including partnering with customers to identify and implement innovative ideas to meet their energy needs, enable customer choice by developing innovative and simple solutions, influence policy, and identify new opportunities to help better manage the grid of the future.

Organization Chart Headcount: 6<sup>1,2</sup>



Note 1: Data current as of first quarter 2017. Excludes contingent workers, vacancies, employees on leave of absence, interns, and service maintenance providers.

Note 2: SCE's entire response to TURN/ORAs Supplemental Budget Showing includes three definitions involving employee counts: (1) Organization Chart Headcount, (2) Full-Time Equivalents (FTEs) and (3) headcounts as defined by ORA in data request ORA-A1701013-SCE003 (May 22, 2017). This organization chart uses "Organizational Chart Headcount" which includes any individuals that charged Energy Efficiency Balancing Account in first quarter 2017. FTEs are a unit of measure showing how many employees SCE has assuming all employees work a full-time schedule. Headcounts as defined by ORA-A1701013-SCE003 assume that "[I]ndividual[s] that charge to multiple functional categories should be counted once in each functional category".

Note 3: Individual did not charge Energy Efficiency Balancing Account and has been excluded from "Organization Chart Headcount".

# Business Customer Division

## BCD Operations

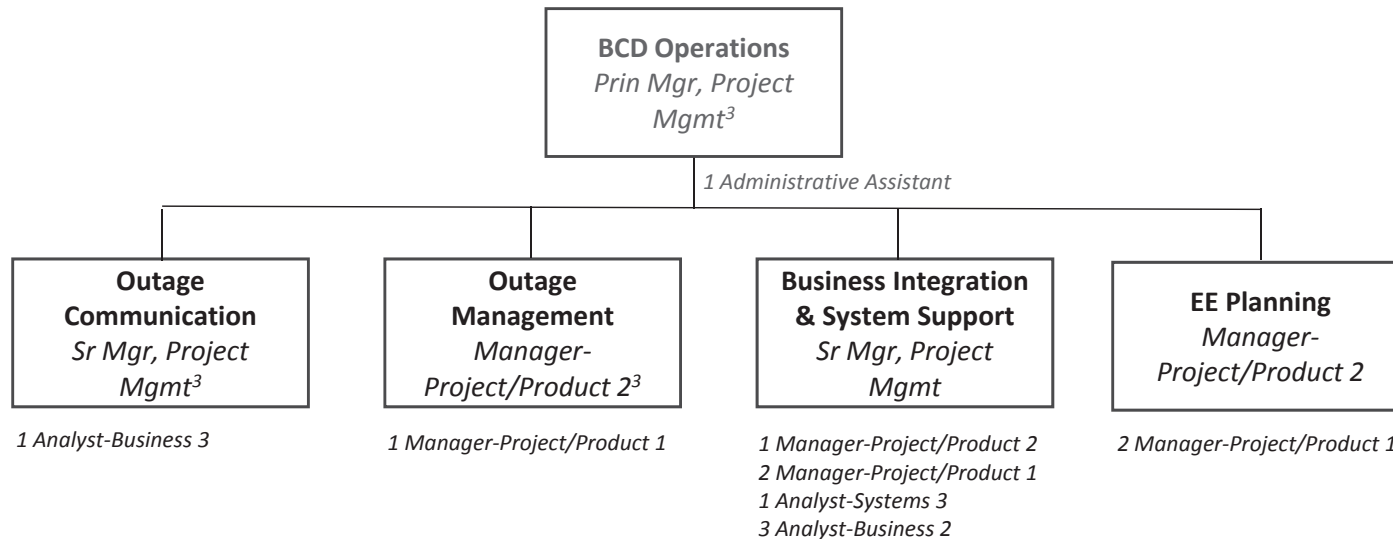
SCE EE Organization Chart 17  
 Supplemental Information Provided In  
 Support of Application 17-01-013

Functional Category: Account Management

Detailed Definition: Represents the Company by delivering consultative sales and marketing of electric energy, services, and products to ensure the attainment of revenue goals. Consults with customers to assess their business needs and requirements, and identifies value added Company products, services, and/or innovative solutions to address their needs.

Summary Function Description: Partner with organizations within SCE to build and improve process and measures to positively impact service to customers in the specialties of outage management and communication, energy efficiency programs and tools, as well as data accuracy and business readiness. Provide experience and expertise in a wide variety of customer care services, project management, and Integrated Demand Side Management support and services.

Organization Chart Headcount: 14<sup>1,2</sup>



Note 1: Data current as of first quarter 2017. Excludes contingent workers, vacancies, employees on leave of absence, interns, and service maintenance providers.

Note 2: SCE's entire response to TURN/ORAs Supplemental Budget Showing includes three definitions involving employee counts: (1) Organization Chart Headcount, (2) Full-Time Equivalents (FTEs) and (3) headcounts as defined by ORA in data request ORA-A1701013-SCE003 (May 22, 2017). This organization chart uses "Organizational Chart Headcount" which includes any individuals that charged Energy Efficiency Balancing Account in first quarter 2017. FTEs are a unit of measure showing how many employees SCE has assuming all employees work a full-time schedule. Headcounts as defined by ORA-A1701013-SCE003 assume that "[I]ndividual[s] that charge to multiple functional categories should be counted once in each functional category".

Note 3: Individual did not charge Energy Efficiency Balancing Account and has been excluded from "Organization Chart Headcount".

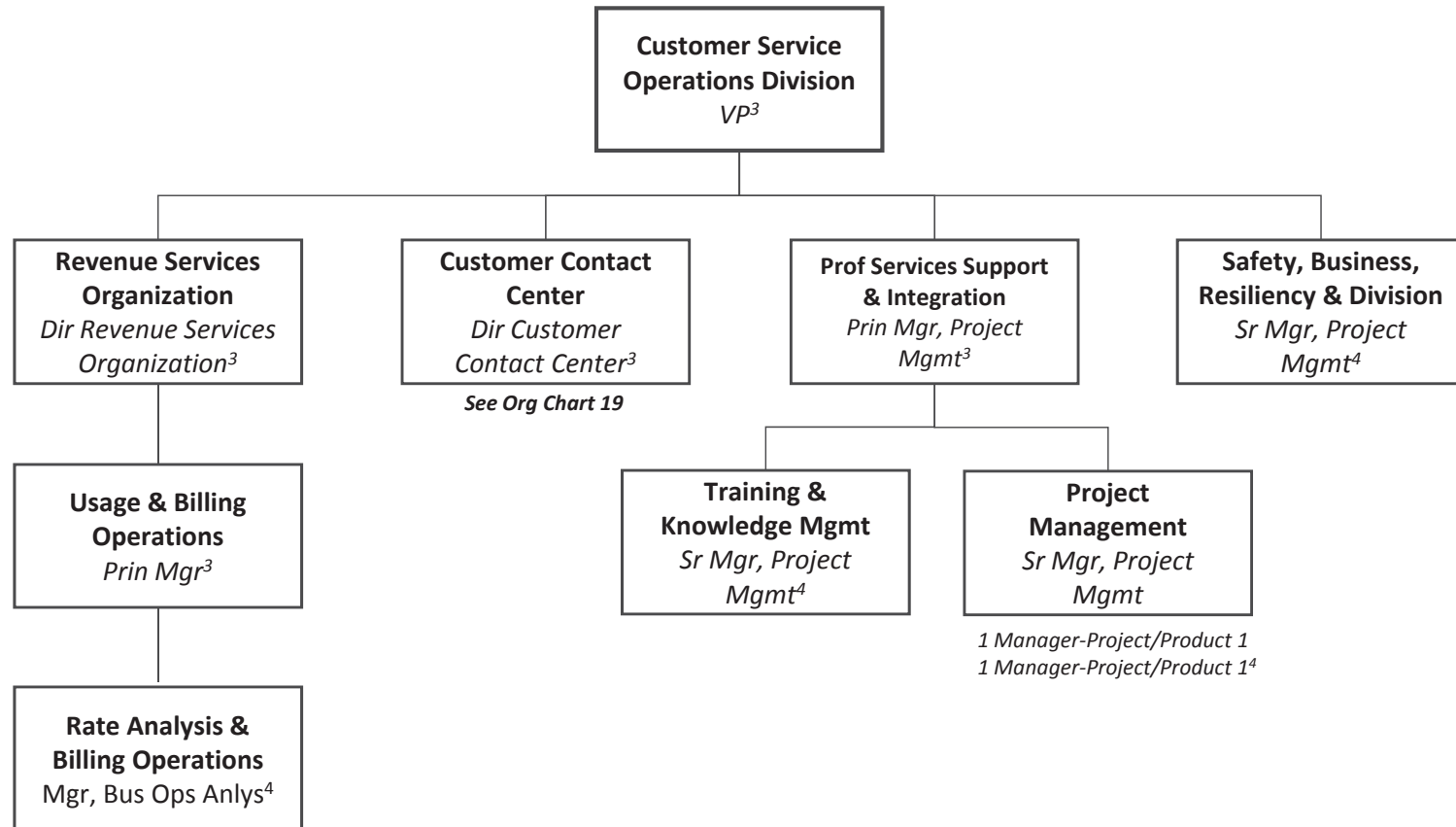


# Customer Service Operations Division

SCE EE Organization Chart 18  
 Supplemental Information Provided In  
 Support of Application 17-01-013

Summary Function Description: This organization is responsible for executing the operational processes needed to satisfy Energy Efficiency (and other DSM) customers' inquiries and transactions. Functions include: inbound call support, application processing and inspections, training of EE frontline employees, and management of outsourced processing vendors.

Organization Chart Headcount: 85<sup>1,2</sup>



Note 1: Data current as of first quarter 2017. Excludes contingent workers, vacancies, employees on leave of absence, interns, and service maintenance providers.

Note 2: SCE's entire response to TURN/ORR Supplemental Budget Showing includes three definitions involving employee counts: (1) Organization Chart Headcount, (2) Full-Time Equivalents (FTEs) and (3) headcounts as defined by ORR in data request ORR-A1701013-SCE003 (May 22, 2017). This organization chart uses "Organizational Chart Headcount" which includes any individuals that charged Energy Efficiency Balancing Account in first quarter 2017. FTEs are a unit of measure showing how many employees SCE has assuming all employees work a full-time schedule. Headcounts as defined by ORR-A1701013-SCE003 assume that "[I]ndividual[s] that charge to multiple functional categories should be counted once in each functional category".

Note 3: Individual did not charge Energy Efficiency Balancing Account and has been excluded from "Organization Chart Headcount".

Note 4: Individual charged Energy Efficiency Balancing Account through pre-established accounting. SCE is reviewing for appropriateness.

# Customer Service Operations Division

## Customer Contact Center

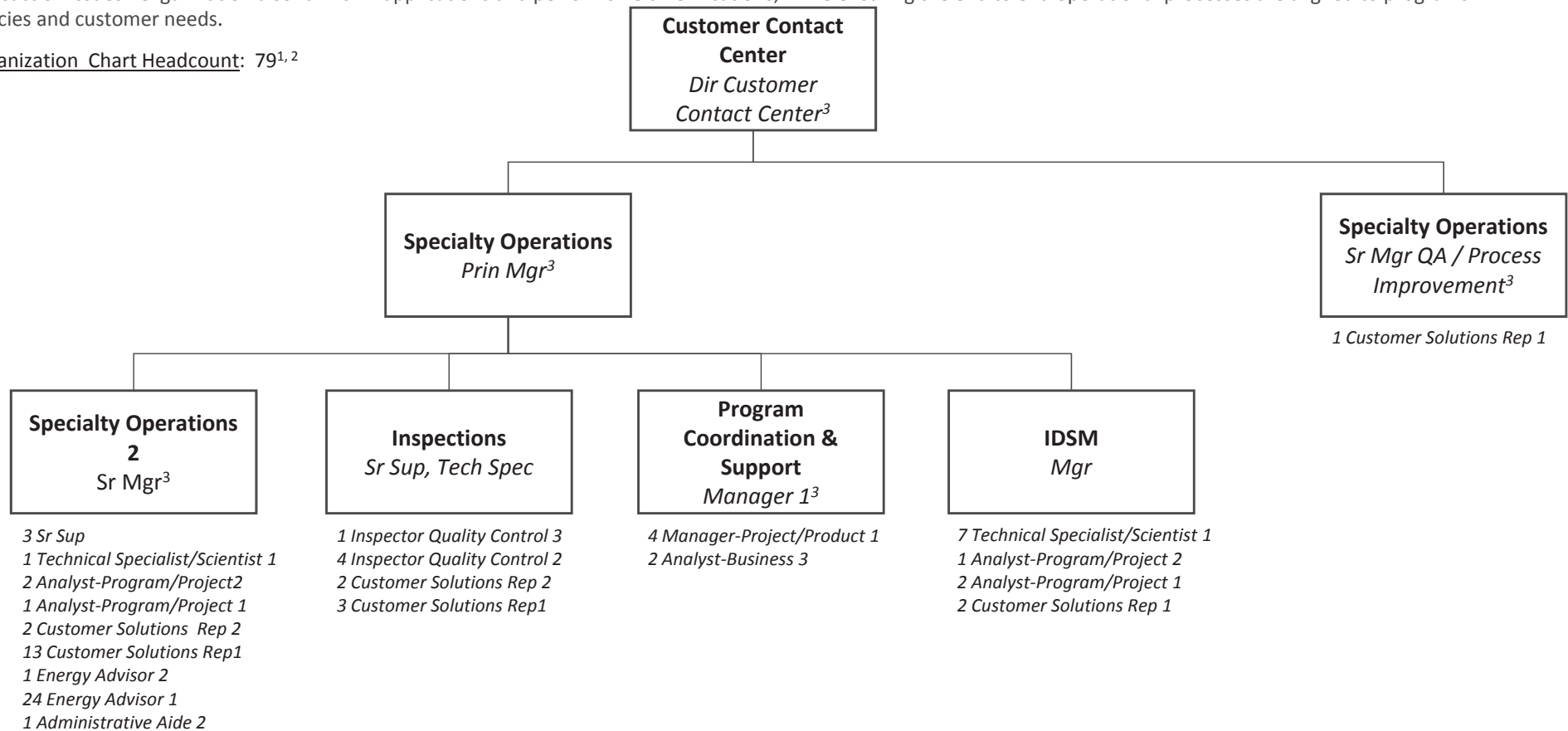
SCE EE Organization Chart 19  
 Supplemental Information Provided In  
 Support of Application 17-01-013

Functional Category: Call Center

Detailed Definition: Evaluates and resolves customer inquiries, issues, and problems, and ensures that appropriate action is taken to the satisfaction of the customer, Company, and/or CPUC in compliance with policies, procedures, tariff rules and rates. Designs, coordinates, implements, and manages programs designed to meet and/or address special needs.

Summary Function Description: Provides inbound and outbound call support for Energy Efficiency customers wishing to be informed of SCE's EE programs or resolve transaction issues. Organization also fulfills EE applications and performs field verifications, while ensuring the end to end operational processes are aligned to programs' policies and customer needs.

Organization Chart Headcount: 79<sup>1, 2</sup>



**Note 1:** Data current as of first quarter 2017. Excludes contingent workers, vacancies, employees on leave of absence, interns, and service maintenance providers.

**Note 2:** SCE's entire response to TURN/ORR Supplemental Budget Showing includes three definitions involving employee counts: (1) Organization Chart Headcount, (2) Full-Time Equivalents (FTEs) and (3) headcounts as defined by ORR in data request ORR-A1701013-SCE003 (May 22, 2017). This organization chart uses "Organizational Chart Headcount" which includes any individuals that charged Energy Efficiency Balancing Account in first quarter 2017. FTEs are a unit of measure showing how many employees SCE has assuming all employees work a full-time schedule. Headcounts as defined by ORR-A1701013-SCE003 assume that "[I]ndividual[s] that charge to multiple functional categories should be counted once in each functional category".

# Regulatory Affairs

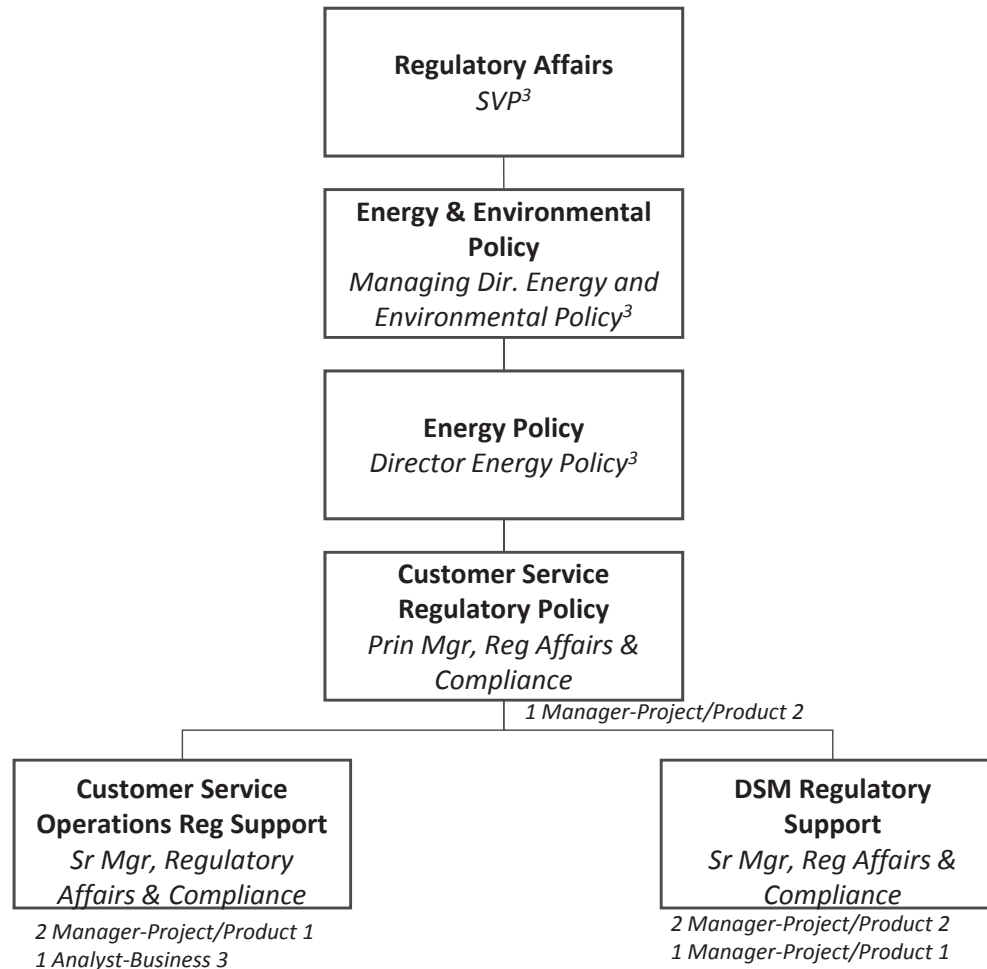
Functional Category: Company Regulatory Support

Detailed Definition: Case management for EE proceedings

Summary Function Description: Provides case management and other regulatory support for EE proceedings.

Organization Chart Headcount: 10<sup>1,2</sup>

SCE EE Organization Chart 20  
Supplemental Information Provided In  
Support of Application 17-01-013



Note 1: Data current as of first quarter 2017. Excludes contingent workers, vacancies, employees on leave of absence, interns, and service maintenance providers.

Note 2: SCE's entire response to TURN/ORAs Supplemental Budget Showing includes three definitions involving employee counts: (1) Organization Chart Headcount, (2) Full-Time Equivalents (FTEs) and (3) headcounts as defined by ORA in data request ORA-A1701013-SCE003 (May 22, 2017). This organization chart uses "Organizational Chart Headcount" which includes any individuals that charged Energy Efficiency Balancing Account in first quarter 2017. FTEs are a unit of measure showing how many employees SCE has assuming all employees work a full-time schedule. Headcounts as defined by ORA-A1701013-SCE003 assume that "[I]ndividual[s] that charge to multiple functional categories should be counted once in each functional category".

Note 3: Individual did not charge Energy Efficiency Balancing Account and has been excluded from "Organization Chart Headcount".

**Appendix C**

**Supporting Information – Request I.B.**

## Energy Efficiency Full Time Equivalent Headcount by Functional Group

Functional Group	2016 EE Portfolio FTE (Annual)	2016 EE Portfolio Head Count [1]	2018 EE Portfolio FTE
Policy, Strategy, and Regulatory Reporting Compliance	29	41	28
Program Management	117	150	113
Engineering Services [3]	53	64	52
Customer Application/Rebate/Incentive Processing	40	59	39
Customer Project Inspections	11	12	11
Portfolio Analytics	8	13	7
EM&V	8	18	8
ME&O	8	24	8
Account Management / Sales	95	179	88
IT	8	10	8
Call Center	16	39	15
Total	392	609	377

**Notes:**

[1] Average head count for the month of January and December 2016

[2] Per ORA Data Request - Individual that charges to multiple functional categories should be counted once in each functional category

[3] Engineering staff also charged labor directly to program

[4] 2018 FTE amounts were determined using historical 2016/17 FTE amounts and adjusting based on estimated 2018 budget amounts.

[5] 2018 FTE amounts are forecast and may change based on number and types of programs to be funded is determined and will be finalized once the 2018 Budget Advice filing is submitted and approved.

**Appendix D**

**Supporting Information – Request I.C.**

## Energy Efficiency Costs by Functional Group

Cost Element	Functional Group	2016 EE Portfolio Expenditures (\$Million)	2018 EE Portfolio Budget (\$Million)	
Labor(1)	Policy, Strategy, and Regulatory Reporting Compliance	\$ 3.79	\$ 3.65	
	Program Management	\$ 13.84	\$ 12.93	
	Engineering services	\$ 5.50	\$ 5.18	
	Customer Application/Rebate/Incentive Processing	\$ 2.89	\$ 2.84	
	Customer Project Inspections	\$ 0.62	\$ 0.60	
	Portfolio Analytics (6)	\$ 2.03	\$ 1.83	
	ME&O (Local)	\$ 0.73	\$ 0.72	
	Account Management / Sales	\$ 11.71	\$ 11.45	
	IT	\$ 0.94	\$ 0.91	
	Call Center	\$ 0.51	\$ 0.49	
	<b>Labor Total</b>		<b>\$ 42.56</b>	<b>\$ 40.60</b>
	Non-Labor	Third-Party Implementers Contracts	\$ 11.86	\$ 17.07
		Local/Government Partnerships Contracts (3)	\$ 2.42	\$ 2.74
Other Contracts		\$ -	\$ -	
Policy, Strategy, and Regulatory Reporting Compliance		\$ 0.61	\$ 0.59	
Program Management		\$ 57.32	\$ 57.10	
Engineering services		\$ 0.93	\$ 0.90	
Customer Application/Rebate/Incentive Processing		\$ 0.13	\$ 0.13	
Customer Project Inspections		\$ -	\$ -	
Portfolio Analytics (6)		\$ 11.46	\$ 9.49	
ME&O (Local)		\$ 1.95	\$ 1.85	
Account Management / Sales		\$ 1.14	\$ 0.96	
IT		\$ 0.59	\$ 0.57	
Call Center		\$ 0.21	\$ 0.20	
Facilities		\$ -	\$ -	
Incentives--Core Programs		\$ 98.71	\$ 50.10	
Incentives--Third Party Program		\$ 46.11	\$ 68.00	
<b>Non-Labor Total</b>			<b>\$ 233.46</b>	<b>\$ 209.69</b>
		<b>\$ 276.02</b>	<b>\$ 250.29</b>	
Other (collected through GRC) (2)	Labor Overheads	\$ 18.00	\$ 17.26	

**Notes:**

- (1) Labor costs are already loaded with (state loaders covered by EE)
- (2) These costs are collected through GRC (state current applicable decision)
- (3) LGP contracts that directly support the sector is included/not included in this item
- (4) 2018 Forecast budget and savings per sector are from Appendix C of the SCE amended Business Plan.
- (5) The 2018 split between Labor and Non-Labor cost by functional group are based on historical cost recorded during the 2016/17 timeframe and adjusted based on total sector budgets derived from 2018 CET outputs in appendix D of the SCE business Plan.
- (6) Included expenditures for SCE and CPUC EM&V
- (7) Contract labor is included in non-labor costs
- (8) SCE did not incur any capital costs related to its 2016 EE portfolio expenditures. Furthermore, SCE did not forecast any capital costs in its 2018 EE portfolio budget.

## Residential

Sector	Cost Element	Functional Group	2016 EE Portfolio Expenditures (\$Million)	2018 EE Portfolio Budget (\$Million)
Residential	Labor(1)	Policy, Strategy, and Regulatory Reporting Compliance	\$ 1.24	\$ 1.21
		Program Management	\$ 2.40	\$ 2.35
		Engineering services	\$ 0.77	\$ 0.76
		Customer Application/Rebate/Incentive Processing	\$ 1.11	\$ 1.08
		Customer Project Inspections	\$ 0.25	\$ 0.25
		Portfolio Analytics	\$ 0.41	\$ 0.40
		ME&O (Local)	\$ 0.50	\$ 0.49
		Account Management / Sales	\$ 0.06	\$ 0.06
		IT	\$ 0.30	\$ 0.29
		Call Center	\$ 0.37	\$ 0.36
	Labor Total		\$ 7.40	\$ 7.25
	Non-Labor	Third-Party Implementers Contracts	\$ 1.08	\$ 5.18
		Local/Government Partnerships Contracts (3)	\$ -	\$ -
		Other Contracts	\$ -	\$ -
		Policy, Strategy, and Regulatory Reporting Compliance	\$ 0.18	\$ 0.17
		Program Management	\$ 9.29	\$ 9.10
		Engineering services	\$ 0.33	\$ 0.32
		Customer Application/Rebate/Incentive Processing	\$ 0.05	\$ 0.05
		Customer Project Inspections	\$ -	\$ -
		Portfolio Analytics	\$ 0.03	\$ 0.03
		ME&O (Local)	\$ 0.63	\$ 0.62
		Account Management / Sales	\$ 0.00	\$ 0.00
		IT	\$ 0.19	\$ 0.18
		Call Center	\$ 0.16	\$ 0.16
		Facilities	\$ -	\$ -
		Incentives--Core Programs	\$ 61.69	\$ 17.32
		Incentives--Third Party Program	\$ 6.26	\$ 28.00
	Non-Labor Total		\$ 79.89	\$ 61.14
Residential Total			\$ 87.29	\$ 68.39
	Other (collected through GRC) (2)	Labor Overheads	\$ 3.21	\$ 3.08

Notes:

- (1) Labor costs are already loaded with (state loaders covered by EE)
- (2) These costs are collected through GRC (state current applicable decision)
- (3) LGP contracts that directly support the sector is included/not included in this item
- (4) 2018 Forecast budget and savings per sector are from Appendix C of the SCE amended Business Plan.
- (5) The 2018 split between Labor and Non-Labor cost by functional group are based on historical cost recorded during the 2016/17 timeframe and adjusted based on total sector budgets derived from 2018 CET outputs in appendix D of the SCE business Plan.



**Commercial**

Sector	Cost Element	Functional Group	2016 EE Portfolio Expenditures (\$Million)	2018 EE Portfolio Budget (\$Million)
Commercial [*]	Labor(1)	Policy, Strategy, and Regulatory Reporting Compliance	\$ 1.52	\$ 1.32
		Program Management	\$ 3.68	\$ 3.20
		Engineering services	\$ 2.22	\$ 1.94
		Customer Application/Rebate/Incentive Processing	\$ 1.24	\$ 1.08
		Customer Project Inspections	\$ 0.32	\$ 0.28
		Portfolio Analytics	\$ 0.50	\$ 0.44
		ME&O (Local)	\$ 0.17	\$ 0.15
		Account Management / Sales	\$ 5.19	\$ 4.51
		IT	\$ 0.37	\$ 0.32
		Call Center	\$ 0.13	\$ 0.11
	Labor Total		\$ 15.34	\$ 13.34
	Non-Labor	Third-Party Implementers Contracts	\$ 6.26	\$ 4.79
		Local/Government Partnerships Contracts (3)	\$ -	\$ -
		Other Contracts	\$ -	\$ -
		Policy, Strategy, and Regulatory Reporting Compliance	\$ 0.27	\$ 0.24
		Program Management	\$ 16.68	\$ 14.51
		Engineering services	\$ 0.33	\$ 0.29
		Customer Application/Rebate/Incentive Processing	\$ 0.06	\$ 0.06
		Customer Project Inspections	\$ -	\$ -
		Portfolio Analytics	\$ 0.04	\$ 0.04
		ME&O (Local)	\$ 1.10	\$ 0.95
		Account Management / Sales	\$ 0.03	\$ 0.03
		IT	\$ 0.24	\$ 0.21
		Call Center	\$ 0.05	\$ 0.05
		Facilities	\$ -	\$ -
		Incentives--Core Programs	\$ 27.71	\$ 20.90
		Incentives--Third Party Program	\$ 31.68	\$ 30.00
	Non-Labor Total		\$ 84.46	\$ 72.06
Commercial [*] Total			\$ 99.80	\$ 85.40
	Other (collected through GRC) (2)	Labor Overheads	\$ 6.56	\$ 5.67

[\*] SCE classified On-Bill Finance program as a commercial sector program in its 2018-2025 EE Program Business Plan

- Notes:
- (1) Labor costs are already loaded with (state loaders covered by EE)
  - (2) These costs are collected through GRC (state current applicable decision)
  - (3) LGP contracts that directly support the sector is included/not included in this item
  - (4) 2018 Forecast budget and savings per sector are from Appendix C of the SCE amended Business Plan.
  - (5) The 2018 split between Labor and Non-Labor cost by functional group are based on historical cost recorded during the 2016/17 timeframe and adjusted based on total sector budgets derived from 2018 CET outputs in appendix D of the SCE business Plan.

## Industrial

Sector	Cost Element	Functional Group	2016 EE Portfolio Expenditures (\$Million)	2018 EE Portfolio Budget (\$Million)
Industrial	Labor(1)	Policy, Strategy, and Regulatory Reporting Compliance	\$ 0.36	\$ 0.50
		Program Management	\$ 0.87	\$ 1.22
		Engineering services	\$ 0.46	\$ 0.64
		Customer Application/Rebate/Incentive Processing	\$ 0.34	\$ 0.47
		Customer Project Inspections	\$ 0.05	\$ 0.07
		Portfolio Analytics	\$ 0.12	\$ 0.17
		ME&O (Local)	\$ 0.05	\$ 0.06
		Account Management / Sales	\$ 2.18	\$ 3.05
		IT	\$ 0.09	\$ 0.13
		Call Center	\$ -	\$ -
	Labor Total		\$ 4.51	\$ 6.31
	Non-Labor	Third-Party Implementers Contracts	\$ 3.24	\$ 5.94
		Local/Government Partnerships Contracts (3)	\$ -	\$ -
		Other Contracts	\$ -	\$ -
		Policy, Strategy, and Regulatory Reporting Compliance	\$ 0.06	\$ 0.08
		Program Management	\$ 0.91	\$ 1.27
		Engineering services	\$ 0.07	\$ 0.10
		Customer Application/Rebate/Incentive Processing	\$ 0.01	\$ 0.02
		Customer Project Inspections	\$ -	\$ -
		Portfolio Analytics	\$ 0.01	\$ 0.01
		ME&O (Local)	\$ 0.13	\$ 0.19
		Account Management / Sales	\$ 0.03	\$ 0.05
		IT	\$ 0.06	\$ 0.08
		Call Center	\$ -	\$ -
		Facilities	\$ -	\$ -
		Incentives--Core Programs	\$ 1.75	\$ 3.59
		Incentives--Third Party Program	\$ 8.17	\$ 10.00
	Non-Labor Total		\$ 14.44	\$ 21.33
Industrial Total			\$ 18.95	\$ 27.64
	Other (collected through GRC) (2)	Labor Overheads	\$ 1.94	\$ 2.68

- Notes:
- (1) Labor costs are already loaded with (state loaders covered by EE)
  - (2) These costs are collected through GRC (state current applicable decision)
  - (3) LGP contracts that directly support the sector is included/not included in this item
  - (4) 2018 Forecast budget and savings per sector are from Appendix C of the SCE amended Business Plan.
  - (5) The 2018 split between Labor and Non-Labor cost by functional group are based on historical cost recorded during the 2016/17 timeframe and adjusted based on total sector budgets derived from 2018 CET outputs in appendix D of the SCE business Plan.

## Agriculture

Sector	Cost Element	Functional Group	2016 EE Portfolio Expenditures (\$Million)	2018 EE Portfolio Budget (\$Million)		
Agriculture	Labor(1)	Policy, Strategy, and Regulatory Reporting Compliance	\$ 0.04	\$ 0.04		
		Program Management	\$ 0.21	\$ 0.20		
		Engineering services	\$ 0.86	\$ 0.85		
		Customer Application/Rebate/Incentive Processing	\$ 0.06	\$ 0.06		
		Customer Project Inspections	\$ -	\$ -		
		Portfolio Analytics	\$ 0.01	\$ 0.01		
		ME&O (Local)	\$ 0.01	\$ 0.01		
		Account Management / Sales	\$ 1.03	\$ 1.01		
		IT	\$ 0.01	\$ 0.01		
		Call Center	\$ -	\$ -		
		<b>Labor Total</b>		\$ 2.24	\$ 2.20	
		Non-Labor	Third-Party Implementers Contracts	\$ -	\$ -	\$ 0.05
			Local/Government Partnerships Contracts (3)	\$ -	\$ -	\$ -
			Other Contracts	\$ -	\$ -	\$ -
			Policy, Strategy, and Regulatory Reporting Compliance	\$ 0.01	\$ 0.01	\$ 0.01
	Program Management		\$ 0.51	\$ 0.50	\$ 0.50	
	Engineering services		\$ 0.01	\$ 0.01	\$ 0.01	
	Customer Application/Rebate/Incentive Processing		\$ 0.00	\$ 0.00	\$ 0.00	
	Customer Project Inspections		\$ -	\$ -	\$ -	
	Portfolio Analytics		\$ 0.00	\$ 0.00	\$ 0.00	
	ME&O (Local)		\$ 0.06	\$ 0.06	\$ 0.06	
	Account Management / Sales		\$ 0.01	\$ 0.01	\$ 0.01	
	IT		\$ 0.01	\$ 0.01	\$ 0.01	
	Call Center	\$ -	\$ -	\$ -		
	Facilities	\$ -	\$ -	\$ -		
	Incentives--Core Programs	\$ 1.25	\$ 1.25	\$ 0.26		
	Incentives--Third Party Program	\$ -	\$ -	\$ -		
<b>Non-Labor Total</b>		\$ 1.85	\$ 1.85	\$ 0.89		
<b>Agriculture Total</b>		\$ 4.09	\$ 4.09	\$ 3.09		
	Other (collected through GRC) (2)	Labor Overheads	\$ 0.89	\$ 0.93		

Notes:

- (1) Labor costs are already loaded with (state loaders covered by EE)
- (2) These costs are collected through GRC (state current applicable decision)
- (3) LGP contracts that directly support the sector is included/not included in this item
- (4) 2018 Forecast budget and savings per sector are from Appendix C of the SCE amended Business Plan.
- (5) The 2018 split between Labor and Non-Labor cost by functional group are based on historical cost recorded during the 2016/17 timeframe and adjusted based on total sector budgets derived from 2018 CET outputs in appendix D of the SCE business Plan.

## Cross Cutting

Sector	Cost Element	Functional Group	2016 EE Portfolio Expenditures (\$Million)	2018 EE Portfolio Budget (\$Million)
Cross Cutting [*]	Labor(1)	Policy, Strategy, and Regulatory Reporting Compliance	\$ 0.34	\$ 0.28
		Program Management	\$ 4.30	\$ 3.52
		Engineering services	\$ 1.03	\$ 0.84
		Customer Application/Rebate/Incentive Processing	\$ 0.00	\$ 0.00
		Customer Project Inspections	\$ -	\$ -
		Portfolio Analytics	\$ 0.11	\$ 0.09
		ME&O (Local)	\$ 0.00	\$ 0.00
		Account Management / Sales	\$ 2.50	\$ 2.05
		IT	\$ 0.07	\$ 0.06
		Call Center	\$ -	\$ -
	Labor Total		\$ 8.35	\$ 6.85
	Non-Labor	Third-Party Implementers Contracts	\$ 1.28	\$ 1.10
		Local/Government Partnerships Contracts (3)	\$ -	\$ -
		Other Contracts	\$ -	\$ -
		Policy, Strategy, and Regulatory Reporting Compliance	\$ 0.06	\$ 0.05
		Program Management	\$ 12.87	\$ 10.55
		Engineering services	\$ 0.08	\$ 0.07
		Customer Application/Rebate/Incentive Processing	\$ -	\$ -
		Customer Project Inspections	\$ -	\$ -
		Portfolio Analytics	\$ 0.01	\$ 0.01
		ME&O (Local)	\$ 0.00	\$ 0.00
		Account Management / Sales	\$ 1.07	\$ 0.87
		IT	\$ 0.05	\$ 0.04
		Call Center	\$ -	\$ -
		Facilities	\$ -	\$ -
		Incentives--Core Programs	\$ 0.01	\$ -
		Incentives--Third Party Program	\$ -	\$ -
	Non-Labor Total		\$ 15.43	\$ 12.70
Cross Cutting [*]	Total		\$ 23.78	\$ 19.55
	Other (collected through GRC) (2)	Labor Overheads	\$ 3.36	\$ 2.91

[\*] SCE classified On-Bill Finance program as a commercial sector program in its 2018-2025 EE Program Business Plan

Notes:

- (1) Labor costs are already loaded with (state loaders covered by EE)
- (2) These costs are collected through GRC (state current applicable decision)
- (3) LGP contracts that directly support the sector is included/not included in this item
- (4) 2018 Forecast budget and savings per sector are from Appendix C of the SCE amended Business Plan.
- (5) The 2018 split between Labor and Non-Labor cost by functional group are based on historical cost recorded during the 2016/17 timeframe and adjusted based on total sector budgets derived from 2018 CET outputs in appendix D of the SCE business Plan.

**Public**

Sector	Cost Element	Functional Group	2016 EE Portfolio Expenditures (\$Million)	2018 EE Portfolio Budget (\$Million)
Public	Labor(1)	Policy, Strategy, and Regulatory Reporting Compliance	\$ 0.30	\$ 0.30
		Program Management	\$ 2.39	\$ 2.43
		Engineering services	\$ 0.15	\$ 0.15
		Customer Application/Rebate/Incentive Processing	\$ 0.14	\$ 0.14
		Customer Project Inspections	\$ -	\$ -
		Portfolio Analytics	\$ 0.10	\$ 0.10
		ME&O (Local)	\$ 0.01	\$ 0.01
		Account Management / Sales	\$ 0.77	\$ 0.78
		IT	\$ 0.10	\$ 0.10
		Call Center	\$ 0.02	\$ 0.02
	Labor Total		\$ 3.96	\$ 4.04
	Non-Labor	Third-Party Implementers Contracts	\$ -	\$ -
		Local/Government Partnerships Contracts (3)	\$ 2.42	\$ 2.74
		Other Contracts	\$ -	\$ -
		Policy, Strategy, and Regulatory Reporting Compliance	\$ 0.05	\$ 0.05
		Program Management	\$ 3.83	\$ 3.90
		Engineering services	\$ 0.11	\$ 0.11
		Customer Application/Rebate/Incentive Processing	\$ -	\$ -
		Customer Project Inspections	\$ -	\$ -
		Portfolio Analytics	\$ 0.01	\$ 0.01
		ME&O (Local)	\$ 0.03	\$ 0.03
		Account Management / Sales	\$ 0.00	\$ 0.00
		IT	\$ 0.05	\$ 0.05
		Call Center	\$ -	\$ -
		Facilities	\$ -	\$ -
		Incentives--Core Programs	\$ 6.30	\$ 8.03
		Incentives--Third Party Program	\$ -	\$ -
	Non-Labor Total		\$ 12.79	\$ 14.92
Public Total			\$ 16.75	\$ 18.96
	Other (collected through GRC) (2)	Labor Overheads	\$ 1.69	\$ 1.72

Notes:

- (1) Labor costs are already loaded with (state loaders covered by EE)
- (2) These costs are collected through GRC (state current applicable decision)
- (3) LGP contracts that directly support the sector is included/not included in this item
- (4) 2018 Forecast budget and savings per sector are from Appendix C of the SCE amended Business Plan.
- (5) The 2018 split between Labor and Non-Labor cost by functional group are based on historical cost recorded during the 2016/17 timeframe and adjusted based on total sector budgets derived from 2018 CET outputs in appendix D of the SCE business Plan.

### Southern California Regional Energy Network

Sector	Cost Element	Functional Group	2016 EE Portfolio Expenditures (\$Million)	2018 EE Portfolio Budget (\$Million)
REN	Labor(1)	Policy, Strategy, and Regulatory Reporting Compliance	\$ -	\$ -
		Program Management	\$ 0.00	\$ 0.00
		Engineering services	\$ -	\$ -
		Customer Application/Rebate/Incentive Processing	\$ -	\$ -
		Customer Project Inspections	\$ -	\$ -
		Portfolio Analytics	\$ -	\$ -
		ME&O (Local)	\$ -	\$ -
		Account Management / Sales	\$ -	\$ -
		IT	\$ -	\$ -
		Call Center	\$ -	\$ -
	Labor Total		\$ 0.00	\$ 0.00
	Non-Labor	Third-Party Implementers Contracts	\$ -	\$ -
		Local/Government Partnerships Contracts (3)	\$ -	\$ -
		Other Contracts	\$ -	\$ -
		Policy, Strategy, and Regulatory Reporting Compliance	\$ -	\$ -
		Program Management	\$ 13.24	\$ 17.26
		Engineering services	\$ -	\$ -
		Customer Application/Rebate/Incentive Processing	\$ -	\$ -
		Customer Project Inspections	\$ -	\$ -
		Portfolio Analytics	\$ -	\$ -
		ME&O (Local)	\$ -	\$ -
		Account Management / Sales	\$ -	\$ -
		IT	\$ -	\$ -
		Call Center	\$ -	\$ -
		Facilities	\$ -	\$ -
		Incentives--Core Programs	\$ -	\$ -
		Incentives--Third Party Program	\$ -	\$ -
	Non-Labor Total		\$ 13.24	\$ 17.26
REN Total			\$ 13.24	\$ 17.26
	Other (collected through GRC) (2)	Labor Overheads	\$ -	

- Notes:
- (1) Labor costs are already loaded with (state loaders covered by EE)
  - (2) These costs are collected through GRC (state current applicable decision)
  - (3) LGP contracts that directly support the sector is included/not included in this item

**EM&V**

Sector	Cost Element	Functional Group	2016 EE Portfolio Expenditures (\$Million)	2018 EE Portfolio Budget (\$Million)
EM&V	Labor(1)	Policy, Strategy, and Regulatory Reporting Compliance	\$ -	\$ -
		Program Management	\$ -	\$ -
		Engineering services	\$ -	\$ -
		Customer Application/Rebate/Incentive Processing	\$ -	\$ -
		Customer Project Inspections	\$ -	\$ -
		Portfolio Analytics	\$ 0.77	\$ 0.62
		ME&O (Local)	\$ -	\$ -
		Account Management / Sales	\$ -	\$ -
		IT	\$ -	\$ -
		Call Center	\$ -	\$ -
	<b>Labor Total</b>		<b>\$ 0.77</b>	<b>\$ 0.62</b>
	Non-Labor	Third-Party Implementers Contracts	\$ -	\$ -
		Local/Government Partnerships Contracts (3)	\$ -	\$ -
		Other Contracts	\$ -	\$ -
		Policy, Strategy, and Regulatory Reporting Compliance	\$ -	\$ -
		Program Management	\$ -	\$ -
		Engineering services	\$ -	\$ -
		Customer Application/Rebate/Incentive Processing	\$ -	\$ -
		Customer Project Inspections	\$ -	\$ -
		Portfolio Analytics	\$ 11.36	\$ 9.40
		ME&O (Local)	\$ -	\$ -
		Account Management / Sales	\$ -	\$ -
		IT	\$ -	\$ -
		Call Center	\$ -	\$ -
		Facilities	\$ -	\$ -
		Incentives--Core Programs	\$ -	\$ -
		Incentives--Third Party Program	\$ -	\$ -
	<b>Non-Labor Total</b>		<b>\$ 11.36</b>	<b>\$ 9.40</b>
<b>EM&amp;V Total</b>			<b>\$ 12.13</b>	<b>\$ 10.01</b>
	Other (collected through GRC) (2)	Labor Overheads	\$ 0.34	\$ 0.26

- Notes:
- (1) Labor costs are already loaded with (state loaders covered by EE)
  - (2) These costs are collected through GRC (state current applicable decision)
  - (3) LGP contracts that directly support the sector is included/not included in this item

**Appendix E**

**Supporting Information – Response to Scoping Memo, Attachment A, Question C.8.**



## Energy Efficiency Costs and Savings Forecast by Sector

Sector [1]	2016 EE Portfolio Expenditures (\$Million)				2018 EE Portfolio Budget (\$Million)				2016 EE Portfolio Savings			2018 EE Portfolio Forecasted Savings		
	Labor [2]	Non-Labor (excl. Incentives)	Incentives	Total	Labor	Non-Labor (excl. Incentives)	Incentives	Total	KWH	KW	M THERMS	KWH	KW	M THERMS
Residential	\$ 7.40	\$ 11.94	\$ 67.95	\$ 87.29	\$ 7.25	\$ 15.82	\$ 45.32	\$ 68.39	351,410,344	72,241		210,091,055	92,409	
Commercial [3]	\$ 15.34	\$ 22.19	\$ 59.39	\$ 96.92	\$ 13.34	\$ 21.16	\$ 50.90	\$ 85.40	215,961,921	43,949		270,505,278	46,069	
Agricultural	\$ 2.24	\$ 0.60	\$ 1.25	\$ 4.09	\$ 2.20	\$ 0.64	\$ 0.26	\$ 3.09	12,141,150	1,413		1,817,680	420	
Industrial	\$ 4.51	\$ 4.52	\$ 9.92	\$ 18.95	\$ 6.31	\$ 7.74	\$ 13.59	\$ 27.64	89,591,965	12,456		127,633,478	8,130	
Public (GP)	\$ 3.96	\$ 6.49	\$ 6.30	\$ 16.75	\$ 4.04	\$ 6.89	\$ 8.03	\$ 18.96	25,189,460	3,232		28,686,906	3,728	
Cross Cutting*	\$ 8.35	\$ 15.42	\$ 0.01	\$ 23.78	\$ 6.85	\$ 12.70	\$ -	\$ 19.55	754,183,218	147,609		451,881,957	110,486	
<b>Sector Total</b>	<b>\$ 41.79</b>	<b>\$ 61.15</b>	<b>\$ 144.82</b>	<b>\$ 247.77</b>	<b>\$ 39.98</b>	<b>\$ 64.94</b>	<b>\$ 118.10</b>	<b>\$ 223.02</b>	<b>1,448,478,059</b>	<b>280,899</b>		<b>1,090,616,353</b>	<b>261,241</b>	
EM&V-PA	\$ 0.77	\$ 0.31	\$ -	\$ 1.08	\$ 0.26	\$ 3.75	\$ -	\$ 4.00						
EM&V-ED	\$ -	\$ 11.05	\$ -	\$ 11.05	\$ -	\$ 6.01	\$ -	\$ 6.01						
OBF - Loan Pool**	\$ -	\$ 2.88	\$ -	\$ 2.88	\$ -	\$ -	\$ -	\$ -						
SCalREN	\$ 0.00	\$ 13.24	\$ -	\$ 13.24	\$ 0.00	\$ 17.26	\$ -	\$ 17.26	867,386	921		9,433,702	9,395	
BayREN				\$ -				\$ -						
MCE				\$ -				\$ -						
<b>EE Total</b>	<b>\$ 42.56</b>	<b>\$ 88.63</b>	<b>\$ 144.82</b>	<b>\$ 276.02</b>	<b>\$ 40.24</b>	<b>\$ 91.95</b>	<b>\$ 118.10</b>	<b>\$ 250.29</b>	<b>1,449,345,445</b>	<b>281,820</b>		<b>1,100,050,055</b>	<b>270,636</b>	

**Notes:**

[1] Sector mapping is based on SCE's 2018-2015 Business Plan program mapping. Used 2015 program sector mapping for program that does not exist in the 2018 Business Plan.

[2] Included other labor related expenses (ie. travel, mileage, etc)

[3] SCE classified On-Bill Finance program as a commercial sector program in its 2018-2025 EE Program Business Plan

[4] 2018 Forecast budget and savings per sector are from Appendix C of the SCE amended Business Plan.

[5] The 2018 split between Labor and Non-Labor cost by functional group are based on historical cost recorded during the 2016/17 timeframe and adjusted based on total sector budgets derived from 2018 CET outputs in appendix D of the SCE business Plan.

\* Cross Cutting Sector includes Codes & Standards, Emerging Technologies, Workforce Education & Training, Financing.

\*\* For SDG&E and SCG the loan pool is not part of the authorized EE portfolio budget and is collected and tracked through a separate balancing account.

**Appendix F**

**Supporting Information – Response to Scoping Memo, Attachment A, Question C.9.**

## Energy Efficiency In-House Budget by Sector and Cross-Cutting

Sector [1]	2016 EE Portfolio Expenditures (\$Million)				2018 EE Portfolio Budget (\$Million)			
	Labor [2]	Non-Labor (excl. Incentives)	Incentives	Total	Labor	Non-Labor (excl. Incentives)	Incentives	Total
Residential	\$ 7.40	\$ 11.94	\$ 67.95	\$ 87.29	\$ 7.25	\$ 15.82	\$ 45.32	\$ 68.39
Commercial [3]	\$ 15.34	\$ 22.19	\$ 59.39	\$ 96.92	\$ 13.34	\$ 21.16	\$ 50.90	\$ 85.40
Agricultural	\$ 2.24	\$ 0.60	\$ 1.25	\$ 4.09	\$ 2.20	\$ 0.64	\$ 0.26	\$ 3.09
Industrial	\$ 4.51	\$ 4.52	\$ 9.92	\$ 18.95	\$ 6.31	\$ 7.74	\$ 13.59	\$ 27.64
Public (GP)	\$ 3.96	\$ 6.49	\$ 6.30	\$ 16.75	\$ 4.04	\$ 6.89	\$ 8.03	\$ 18.96
Cross Cutting*	\$ 8.35	\$ 15.42	\$ 0.01	\$ 23.78	\$ 6.85	\$ 12.70	\$ -	\$ 19.55
<b>Sector Total</b>	<b>\$ 41.79</b>	<b>\$ 61.15</b>	<b>\$ 144.82</b>	<b>\$ 247.77</b>	<b>\$ 39.98</b>	<b>\$ 64.94</b>	<b>\$ 118.10</b>	<b>\$ 223.02</b>
EM&V-PA	\$ 0.77	\$ 0.31	\$ -	\$ 1.08	\$ 0.26	\$ 3.75	\$ -	\$ 4.00
EM&V-ED	\$ -	\$ 11.05	\$ -	\$ 11.05	\$ -	\$ 6.01	\$ -	\$ 6.01
OBF - Loan Pool**	\$ -	\$ 2.88	\$ -	\$ 2.88	\$ -	\$ -	\$ -	\$ -
SCaREN	\$ 0.00	\$ 13.24	\$ -	\$ 13.24	\$ 0.00	\$ 17.26	\$ -	\$ 17.26
BayREN				\$ -				\$ -
MCE				\$ -				\$ -
<b>EE Total</b>	<b>\$ 42.56</b>	<b>\$ 88.63</b>	<b>\$ 144.82</b>	<b>\$ 276.02</b>	<b>\$ 40.24</b>	<b>\$ 91.95</b>	<b>\$ 118.10</b>	<b>\$ 250.29</b>

**Notes:**

[1] Sector mapping is based on SCE's 2018-2015 Business Plan program mapping. Used 2015 program sector mapping for program that does not exist in the 2018 Business Plan.

[2] Included other labor related expenses, ie travel, mileage, etc.

[3] SCE classified On-Bill Finance program as a commercial sector program in its 2018-2025 EE Program Business Plan

[4] 2018 Forecast budget and savings per sector are from Appendix C of the SCE amended Business Plan.

[5] The 2018 split between Labor and Non-Labor cost by functional group are based on historical cost recorded during the 2016/17 timeframe and adjusted based on total sector budgets derived from 2018 CET outputs in appendix D of the SCE business Plan.

\* Cross Cutting Sector includes Codes & Standards, Emerging Technologies, Workforce Education & Training, Financing.

\*\* For SDG&E and SCG the loan pool is not part of the authorized EE portfolio budget and is collected and tracked through a separate balancing account.

**Appendix G**

**Supporting Information – Response to Scoping Memo, Attachment A, Question C.10.**

## Solicitation Schedule

2017			
Q1	Q2	Q3	Q4(Assumes BP Approval)
			<b>Requests for Abstract:</b> Gather a broad spectrum of innovative third-party program ideas in the form of informational abstracts.
2018 (target 50% of portfolio budget)			
Q1	Q2	Q3	Q4
<b>Request for Proposals</b> <ul style="list-style-type: none"> <li>• Commercial Sector</li> <li>• Industrial Sector</li> <li>• <i>Commercial New Construction Program</i></li> <li>• Residential Sector</li> <li>• <i>Lighting Program</i></li> </ul>	<b>Request for Abstracts</b> Gather ideas to fill portfolio gaps and provide an opportunity to introduce new innovative program designs not captured in prior RFPs	<b>Request for Proposals</b> <ul style="list-style-type: none"> <li>• Public Sector</li> <li>• <i>Statewide Government &amp; Institutional Partnerships Program</i></li> <li>• <i>Water Infrastructure &amp; System Efficiency Program</i></li> <li>• <i>Electric Emerging Technologies Program.</i></li> </ul>	<b>Request for Abstracts</b> Gather ideas to fill portfolio gaps and provide an opportunity to introduce new innovative program designs not captured in prior RFPs
2019 (target 60% of portfolio budget)			
Q1	Q2	Q3	Q4
<b>Request for Proposals</b> <ul style="list-style-type: none"> <li>• Agricultural Sector</li> </ul>	<b>Request for Abstracts</b> Gather ideas to fill portfolio gaps and provide an opportunity to introduce new innovative program designs not captured in prior RFPs.	<b>Request for Abstracts</b> Gather ideas to fill portfolio gaps and provide an opportunity to introduce new innovative program designs not captured in prior RFPs	<b>Request for Abstracts</b> Gather ideas to fill portfolio gaps and provide an opportunity to introduce new innovative program designs not captured in prior RFPs
2020 (exceed 60% of portfolio budget)			
Q1	Q2	Q3	Q4
<b>Request for Abstracts</b> Gather ideas to fill portfolio gaps and provide	<b>Request for Abstracts</b> Gather ideas to fill portfolio gaps and provide	<b>Request for Abstracts</b> Gather ideas to fill portfolio gaps and provide	<b>Request for Abstracts</b> Gather ideas to fill portfolio gaps and provide
an opportunity to introduce new innovative program designs not captured in prior RFPs. <i>Potential contract refresh opportunity depending on vendor performance and program uptake.</i>	an opportunity to introduce new innovative program designs not captured in prior RFPs. <i>Potential contract refresh opportunity depending on vendor performance and program uptake</i>	an opportunity to introduce new innovative program designs not captured in prior RFPs. <i>Potential contract refresh opportunity depending on vendor performance and program uptake</i>	an opportunity to introduce new innovative program designs not captured in prior RFPs. <i>Potential contract refresh opportunity depending on vendor performance and program uptake.</i>
Notes 1. The timing or order for the sectors and programs delineated in the table above may change depending upon the information gathered through the request for abstracts (RFA), the date of the CPUC's approval of the business plan, or other factors. 2. Additional request for proposals (RFPs) may be conducted at any time in order to fill gaps in the portfolio, refresh contracts, or as a result of additional information gathered through the request for abstracts. 3. Request for abstracts may be held open continuously and may overlap with RFPs.			

**Appendix H**

**Supporting Information – Response to Scoping Memo, Attachment A,  
Question C.14.**

## Supporting Information – Response to Scoping Memo, Attachment A, Question C.14.

Note: SCE has not finalized the budgets associated with the solicitation of the Statewide Downstream Pilot Programs at this time; however, SCE assumes that budgets will be commensurate with those indicated by PG&E and has used those for planning purposes.

Statewide Program	Proposed Lead	2018 Budget (\$M)	2019 Budget (\$M)	2020 Budget (\$M)
State Government Partnership	PG&E	\$ 4.74	\$ 4.78	\$ 4.81
Codes and Standards Advocacy	PG&E	\$ 11.95	\$ 12.06	\$ 12.13
WE&T Connections	PG&E	\$ 4.08	\$ 4.09	\$ 4.10
WE&T Career & Workforce Readiness (downstream pilot)	PG&E	\$ 1.67	\$ 1.67	\$ 1.67
Indoor Agriculture (downstream pilot)	PG&E	TBD	TBD	TBD
Emerging Technologies--Electric	SCE	\$ 14.52	\$ 14.75	\$ 14.90
Lighting	SCE	\$ 16.82	\$ 13.35	\$ 13.37
Savings by Design	SCE	\$ 22.89	\$ 23.30	\$ 23.59
Government Institutional Partnerships	SCE	\$ 15.63	\$ 15.47	\$ 15.22
Water/Wastewater Pumping (downstream pilot)	SCE	\$ 5.25	\$ 5.26	\$ 5.28
Residential New Construction	SCG	\$ 13.37	\$ 19.11	\$ 9.41
Emerging Technologies--Gas	SCG	\$ 2.66	\$ 2.69	\$ 2.72
Food Service POS	SCG	\$ 5.42	\$ 5.66	\$ 5.78
Commercial Midstream Water Heaters	SCG	\$ 2.62	\$ 2.69	\$ 2.72
Commercial Upstream HVAC	SDG&E	\$ 30.29	\$ 30.98	\$ 31.44
Residential Upstream HVAC	SDG&E	\$ 1.86	\$ 1.98	\$ 2.06
Residential PLA	SDG&E	\$ 27.97	\$ 29.47	\$ 23.11
Residential HVAC QI/QM (downstream pilot)	SDG&E	\$ 6.85	\$ 7.32	\$ 7.86

**Notes**

\*PG&E's amount does not include RPP

\*\*SW budgets may be adjusted before and after the solicitation process based on portfolio needs and proposals received.

**BEFORE THE PUBLIC UTILITIES COMMISSION OF THE  
STATE OF CALIFORNIA**

Application of Southern California Edison Company (U 338-E) for Approval of Energy Efficiency Rolling Portfolio Business Plan.	A.17-01-013 (Filed January 13, 2017)
And Related Matters	A. 17-01-014 A.17-01-015 A.17-01-016 A.17-01-017

**CERTIFICATE OF SERVICE**

I hereby certify that, pursuant to the Commission's Rules of Practice and Procedure, I have this day served a true copy of **SOUTHERN CALIFORNIA EDISON COMPANY'S (U 338-E) RESPONSES TO THE REQUEST FOR SUPPLEMENTAL BUDGET AND RELATED INFORMATION** on all parties identified on the attached service list **A.17-01-013 et al.** Service was effected by one or more means indicated below:

- Transmitting the copies via e-mail to all parties who have provided an e-mail address.
- Placing the copies in sealed envelopes and causing such envelopes to be delivered by hand or by overnight courier to the offices of the Assigned ALJ(s) or other addressee(s).

**ALJ Julie A. Fitch**  
CPUC  
505 Van Ness Avenue  
San Francisco, CA 94102

**ALJ Valerie Kao**  
CPUC  
505 Van Ness Avenue  
San Francisco, CA 94102

Executed **June 12, 2017**, at Rosemead, California.

/s/ Irene Gutierrez

**Irene Gutierrez**

**Legal Assistant**

**SOUTHERN CALIFORNIA EDISON COMPANY**

2244 Walnut Grove Avenue  
Post Office Box 800  
Rosemead, California 91770





## CALIFORNIA PUBLIC UTILITIES COMMISSION

### Service Lists

---

**PROCEEDING: A1701013 - EDISON - FOR APPROVA**  
**FILER: SOUTHERN CALIFORNIA EDISON COMPANY**  
**LIST NAME: LIST**  
**LAST CHANGED: JUNE 9, 2017**

[DOWNLOAD THE COMMA-DELIMITED FILE](#)  
[ABOUT COMMA-DELIMITED FILES](#)

[Back to Service Lists Index](#)

---

### Parties

---

ANDREW BROOKS  
 DIR - WEST COAST OPER.  
 ASSOCIATION OF ENERGY AFFORDABILITY  
 EMAIL ONLY  
 EMAIL ONLY, CA 00000  
 FOR: ASSOCIATION FOR ENERGY  
 AFFORDABILITY

ANGELA HACKER  
 COUNTY OF SANTA BARBARA  
 EMAIL ONLY  
 EMAIL ONLY, CA 00000  
 FOR: COUNTY OF SANTA BARBARA, EMPOWER

CARMELITA L. MILLER  
 LEGAL COUNSEL  
 THE GREENLINING INSTITUTE  
 EMAIL ONLY  
 EMAIL ONLY, CA 00000  
 FOR: THE GREENLINING INSTITUTE

CHARLES CORMANY  
 EXECUTIVE DIRECTOR  
 EFFICIENCY FIRST CALIFORNIA (EF CA)  
 EMAIL ONLY  
 EMAIL ONLY, CA 00000  
 FOR: CALIFORNIA BUILDING PERFORMANCE  
 CONTRACTORS ASSOCIATION DBA EFFICIENCY  
 FIRST CALIFORNIA (EF CA)

HOWARD CHOY  
 GEN. MGR., OFFICE OF SUSTAINABILITY  
 COUNTY OF LOS ANGELES  
 EMAIL ONLY  
 EMAIL ONLY, CA 00000  
 FOR: SOUTHERN CALIFORNIA REGIONAL  
 ENERGY NETWORK (SCREN)

HOWARD W. CHOY  
 GEN. MGR - OFFICE OF SUSTAINABILITY  
 LOS ANGELES COUNTY ISD  
 EMAIL ONLY  
 EMAIL ONLY, CA 00000  
 FOR: LOCAL GOVERNMENT SUSTAINABLE  
 ENERGY COALITION (LGSEC)

JONATHAN MCHUGH, PE  
 PRINCIPAL  
 MCHUGH ENERGY CONSULTANTS INC  
 EMAIL ONLY

LARA ETTENSON  
 NATURAL RESOURCES DEFENSE DOUNCIL  
 EMAIL ONLY  
 EMAIL ONLY, CA 00000

EMAIL ONLY, CA 00000  
 FOR: MCHUGH ENERGY CONSULTANTS, INC.  
 [MCHUGH ENERGY]

FOR: NATURAL RESOURCES DEFENSE COUNCIL  
 (NRDC)

PETER MILLER  
 NATURAL RESOURCES DEFENSE COUNCIL  
 EMAIL ONLY  
 EMAIL ONLY, CA 00000  
 FOR: NATURAL RESOURCES DEFENSE COUNCIL  
 (NRDC)

DONALD GILLIGAN  
 PRESIDENT  
 NATI'L ASSN. OF ENERGY SVC. COMPANIES  
 1615 M STREET, NW  
 WASHINGTON, DC 20036  
 FOR: NATIONAL ASSOCIATION OF ENERGY  
 SERVICE COMPANIES (NAESCO)

GREG MERRITT  
 CREE, INC.  
 4600 SILICON DRIVE  
 DURHAM, NC 27703  
 FOR: CREE, INC.

ROB FALKE  
 PRESIDENT  
 NATIONAL COMFORT INSTITUTE  
 PO BOX 147  
 AVON LAKE, OH 44012  
 FOR: NATIONAL COMFORT INSTITUTE

KRISTIN ANDERSON  
 PRESIDENT  
 OCCAM'S ENERGY CONSULTING, INC.  
 4015 W 65TH STREET, SUITE 302  
 MINNEAPOLIS, MN 55435  
 FOR: APPLIANCE RECYCLING CENTERS OF  
 AMERICA, INC. (ARCA)

JUSTIN SEGALL  
 FOUNDER & EXECUTIVE VICE PRESIDENT  
 SIMPLE ENERGY  
 1215 SPRUCE ST., STE. 301  
 BOULDER, CO 80302-4839  
 FOR: SIMPLE ENERGY

JOHNNY PONG  
 SENIOR COUNSEL  
 SOUTHERN CALIFORNIA GAS COMPANY  
 555 WEST FIFTH STREET SUITE 1400  
 LOS ANGELES, CA 90013  
 FOR: SOUTHERN CALIFORNIA GAS COMPANY

PAUL THOMAS  
 SYZERGY, INC.  
 4000 LONG BEACH BLVD., STE. 206  
 LONG BEACH, CA 90807  
 FOR: SYZERGY, INC.

DANIEL W. DOUGLASS  
 ATTORNEY  
 DOUGLASS & LIDDELL  
 4766 PARK GRANADA, STE. 209  
 CALABASAS, CA 91302  
 FOR: NEST LABS, INC.

DANIEL W. DOUGLASS  
 ATTORNEY  
 DOUGLASS & LIDDELL  
 4766 PARK GRANADA, SUITE 209  
 CALABASAS, CA 91302  
 FOR: UNIVERSITY OF CALIFORNIA; NEST  
 LABS, INC.

JANE LEE COLE  
 SOUTHERN CALIFORNIA EDISON COMPANY  
 2244 WALNUT GROVE AVE.  
 ROSEMEAD, CA 91770  
 FOR: SOUTHERN CALIFORNIA EDISON COMPANY

JANE LEE COLE, ESQ.  
 SR. ATTORNEY  
 SOUTHERN CALIFORNIA EDISON COMPANY  
 2244 WALNUT GROVE AVE. / PO BOX 800  
 ROSEMEAD, CA 91770  
 FOR: SOUTHERN CALIFORNIA EDISON COMPANY

JULIE WILEY  
 SPECIAL COUNSEL  
 SAN DIEGO ASSOCIATION OF GOVERNMENTS  
 401 B STREET, SUITE 800  
 SAN DIEGO, CA 92101

FREDERICK M. ORTLIEB  
 DEPUTY CITY ATTORNEY  
 CITY OF SAN DIEGO  
 1200 THIRD AVENUE, SUITE 1100  
 SAN DIEGO, CA 92101-4100

FOR: SAN DIEGO ASSOCIATION OF  
GOVERNMENTS (SANDAG)

FOR: CITY OF SAN DIEGO

E. GREGORY BARNES  
ATTORNEY AT LAW  
SAN DIEGO GAS & ELECTRIC COMPANY  
8330 CENTURY PARK COURT, CP32D  
SAN DIEGO, CA 92123  
FOR: SAN DIEGO GAS & ELECTRIC COMPANY

ELLEN ADLER  
SAN DIEGO GAS & ELECTRIC COMPANY  
8330 CENTURY PARK CT.  
SAN DIEGO, CA 92123  
FOR: SAN DIEGO GAS & ELECTRIC COMPANY

SACHU CONSTANTINE  
DIR. OF POLICY  
CENTER FOR SUSTAINABLE ENERGY  
9325 SKY PARK COURT, SUITE 100  
SAN DIEGO, CA 92123  
FOR: CENTER FOR SUSTAINABLE ENERGY

THOMAS R. BRILL  
SR COUNSEL & DIRECTOR  
SAN DIEGO GAS & ELECTRIC COMPANY  
8330 CENTURTY PARK CT., CP32E  
SAN DIEGO, CA 92123-1530  
FOR: SAN DIEGO GAS & ELECTRIC COMPANY

GEORGE ODERO  
ENERGYWISE ENG'RING & TECH. CONSULTING  
3298 GOVERNOR DRIVE, STE. 22496  
SAN DIEGO, CA 92192  
FOR: ENERGYWISE ENGINEERING AND  
TECHNICAL CONSULTING (EETC)

DOUG AVERY  
CO-CHAIR  
CALIFORNIA ENERGY EFFICIENCY ALLIANCE  
24134 ESMERALDA COURT  
WILDOMAR, CA 92595  
FOR: CALIFORNIA ENERGY EFFICIENCY  
ALLIANCE (CEFA)

ALEJANDRA TELLEZ  
MGMT ANALYST, COUNTY EXEC OFFICE  
COUNTY OF VENTURA  
800 S. VICTORIA AVENUE, L-1940  
VENTURA, CA 93009  
FOR: THE COUNTY OF VENTURA

JON GRIESSER  
CHAIR, RHTR  
RURAL HARD TO REACH LOCAL GOVT  
COUNTY OF SAN LUIS OBISPO  
976 OSOS STREET, SUITE 300  
SAN LUIS OBISPO, CA 93401  
FOR: THE RURAL HARD TO REACH LOCAL  
GOVERNMENT PARTNERSHIPS' WORKING GROUP  
(RHTR)

TREVOR KEITH  
COUNTY OF SAN LUIS OBISPO  
976 OSOS STREET  
SAN LUIS OBISPO, CA 93408  
FOR: COUNTY OF SAN LUIS OBISPO

COURTNEY KALASHIAN  
CP-CHAIR, RHTR  
SAN JOAQUIN VALLEY CLEAN ENERGY ORG.  
4747 NORTH FIRST STREET, SUITE 140  
FRESNO, CA 93726  
FOR: SAN JOAQUIN VALLEY CLEAN ENERGY  
ORGANIZATION (SJVCEO)

ELISABETH B. RUSSELL  
SPECIAL PROJECTS DIRECTOR  
ASSOCIATION OF MONTEREY BAY AREA GOV'TS  
24580 SILVER CLOUD COURT  
MONTEREY, CA 93940  
FOR: ASSOCIATION OF MONTEREY BAY AREA  
GOVERNMENTS (AMBAG)

STEVE SCHMIDT  
HOME ENERGY ANALYTICS  
13061 BYRD LN  
LOS ALTOS, CA 94022  
FOR: HOME ENERGY ANALYTICS (HEA)

ABHAY GUPTA  
CHIEF EXECUTIVE OFFICER  
BIDGELY, INC.

JORDANA CAMMARATA  
FIRSTFUEL SOFTWARE  
ONE EMBARCADERO CENTER, SUITE 1550

298 SOUTH SUNNYVALE AVENUE, STE. 205  
SUNNYVALE, CA 94098  
FOR: BIDGELY, INC.

SAN FRANCISCO, CA 94102  
FOR: FIRSTFUEL SOFTWARE

CHRISTOPHER CLAY  
CALIF PUBLIC UTILITIES COMMISSION  
LEGAL DIVISION  
ROOM 4300  
505 VAN NESS AVENUE  
SAN FRANCISCO, CA 94102-3214  
FOR: ORA

JEANNE M. SOLE  
DEPUTY CITY ATTORNEY  
CITY AND COUNTY OF SAN FRANCISCO  
1 DR. CARLTON B. GOODLETT PLACE, RM. 234  
SAN FRANCISCO, CA 94102-4682  
FOR: CITY AND COUNTY OF SAN FRANCISCO

HAYLEY GOODSON  
STAFF ATTORNEY  
THE UTILITY REFORM NETWORK  
785 MARKET ST., STE. 1400  
SAN FRANCISCO, CA 94103  
FOR: THE UTILITY REFORM NETWORK (TURN)

IVAN JIMENEZ  
LEGAL FELLOW  
BRIGHTLINE DEFENSE PROJECT  
1028A HOWARD STREET  
SAN FRANCISCO, CA 94103  
FOR: BRIGHTLINE DEFENSE PROJECT

ANNETTE BEITEL  
CALIFORNIA TECHNICAL FORUM STAFF  
2298 FULTON ST.  
SAN FRANCISCO, CA 94104  
FOR: CALIOFRNIA TECHNICAL FORUM STAFF  
(CAL TF)

EVELYN KAHL  
ATTORNEY AT LAW  
ALCANTAR & KAHL, LLP  
345 CALIFORNIA ST., STE. 2450  
SAN FRANCISCO, CA 94104  
FOR: ENERGY PRODUCERS AND USERS  
COALITION

JAMES BIRKELUND  
PRESIDENT  
SMALL BUSINESS UTILITY ADVOCATES  
548 MARKET STREET, SUITE 11200  
SAN FRANCISCO, CA 94104  
FOR: SMALL BUSINESS UTILITY ADVOCATES  
(SBUA)

NORA SHERIFF  
COUNSEL  
ALCANTAR & KAHL LLP  
345 CALIFORNIA ST., STE. 2450  
SAN FRANCISCO, CA 94104  
FOR: CALIFORNIA LARGE ENERGY CONSUMERS  
ASSOCIATION (CLECA)

ROSS NAKASONE  
CALIF. POLICY ORGANIZER  
BLUEGREEN ALLIANCE  
155 MONTGOMERY ST., STE. 1001  
SAN FRANCISCO, CA 94104  
FOR: BLUEGREEN ALLIANCE

STEPHANIE WANG  
POLICY DIR  
CALIFORNIA HOUSING PARTNERSHIP  
369 PINE STREET, STE.300  
SAN FRANCISCO, CA 94104  
FOR: CALIFORNIA HOUSING PARTNERSHIP  
CORPORATION

DAN SUYEYASU  
DIR  
CODECYCLE LLC  
55 NEW MONTGOMERY, STE. 703  
SAN FRANCISCO, CA 94105  
FOR: CODECYCLE LLC

LARISSA KOEHLER  
SENIOR ATTORNEY  
ENVIRONMENTAL DEFENSE FUND  
123 MISSION STREET, 28TH FLOOR  
SAN FRANCISCO, CA 94105  
FOR: ENVIRONMENTAL DEFENSE FUND

F. JACKSON STODDARD  
ATTORNEY  
MORGAN LEWIS & BOCKIUS, LLP  
ONE MARKET, SPEAR STREET TOWER

MATTHEW O'KEEFE  
OPOWER  
680 FOLSOM ST., 3RD FL.  
SAN FRANCISCO, CA 94107

SAN FRANCISCO, CA 94105-1126  
FOR: NEXANT, INC.

FOR: OPOWER

MARK SHAHINIAN  
PRESIDENT  
FUTURE GRID COALITION  
15 LAPIDGE STREET, APT. 2  
SAN FRANCISCO, CA 94110  
FOR: FUTURE GRID COALITION

BRIAN CRAGG  
ATTORNEY  
GOODIN, MACBRIDE, SQUERI, DAY & LAMPREY  
505 SANSOME STREET, SUITE 900  
SAN FRANCISCO, CA 94111  
FOR: INDEPENDENT ENERGY PRODUCERS  
ASSOCIATION (IEPA)

VIDHYA PRABHAKARAN  
ATTORNEY  
DAVIS WRIGHT & TREMAINE LLP  
505 MONTGOMERY STREET, SUITE 800  
SAN FRANCISCO, CA 94111  
FOR: CLEARRESULT CONSULTING INC.

IRENE K. MOOSEN  
ATTORNEY AT LAW  
LAW OFFICE OF IRENE K. MOOSEN  
53 SANTA YNEZ AVENUE  
SAN FRANCISCO, CA 94112  
FOR: LOCAL GOVERNMENT SUSTAINABLE  
ENERGY COALITION (LGSEC)

EVELYN C. LEE  
ATTORNEY  
PACIFIC GAS AND ELECTRIC COMPANY  
PO BOX 7442, MC-B30A  
SAN FRANCISCO, CA 94120-7442  
FOR: PACIFIC GAS AND ELECTRIC COMPANY

BARBARA QUITTNER  
PROGRAM ADMINISTRATION  
SYNERGY COMPANIES  
28436 SATELLITE STREET  
HAYWARD, CA 94545  
FOR: SYNERGY COMPANIES

BARBARA QUITTNER  
PROGRAM ADMINISTRATION  
SYNERGY COMPANIES  
28436 SATELLITE STREET  
HAYWARD, CA 94545  
FOR: ENERGY EFFICIENCY INC. (EEI)

ROBERT FRIED  
ATKINSON, ANDELSON, LOYA, RUUD & ROMO  
5075 HOPYARD ROAD, STE. 210  
PLEASANTON, CA 94588  
FOR: INSTITUTE OF HEARING AND AIR  
CONDITIONING INDUSTRIES, INC. (IHACI)

GERALD LAHR  
ENERGY PROGRAMS MGR.  
ASSOCIATION OF BAY AREA GOVERNMENTS  
101 8TH ST.  
OAKLAND, CA 94607  
FOR: SAN FRANCISCO BAY AREA REGIONAL  
ENERGY NETWORK (SFBAREN)

JERRY LAHR  
PROGRAM MANAGER  
ABAG POWER  
101 EIGHT STREET  
OAKLAND, CA 94607-4756  
FOR: ASSOCIATION OF BAY AREA  
GOVERNMENTS (ABAG)

BRUCE MAST  
DIR OF PROGRAMS  
BUILD IT GREEN  
1330 BROADWAY. STE 1702  
OAKLAND, CA 94612  
FOR: BUILD IT GREEN (BIG)

HEATHER LARSON  
ADMINISTRATOR  
EAST BAY ENERGY WATCH  
1537 WEBSTER ST.  
OAKLAND, CA 94612  
FOR: EAST BAY ENERGY WATCH STRATEGIC  
ADVISORY COMMITTEE (EBEWSAC)

KEVIN CORNISH  
VP BUSINESS SERVICES  
COHEN VENTURES, INC./ ENERGY SOLUTIONS  
449 15TH STREET, SUITE 400  
OAKLAND, CA 94612

MICHAEL CALLAHAN  
REGULATORY COUNSEL  
MARIN CLEAN ENERGY  
1125 TAMALPAIS AVE.  
SAN RAFAEL, CA 94901

FOR: COHEN VENTURES, INC. DBA ENERGY SOLUTIONS (ENERGY SOLUTIONS)

FOR: MARIN CLEAN ENERGY

MAHLON ALDRIDGE  
VP - STRATEGIC DEVELOPMENT  
ECOLOGY ACTION OF SANTA CRUZ  
877 CEDAR STREET, STE. 240  
SANTA CRUZ, CA 95060-3938  
FOR: ECOLOGY ACTION OF SANTA CRUZ

DEMETRA J. MCBRIDE  
DIR. - OFF. OF SUST. & CLIMATE ACTION  
SANTA CLARA COUNTY  
70 W. HEDDING ST., E. WING, 11TH FLR.  
SAN JOSE, CA 95110  
FOR: COUNTY OF LOS ANGELES

KELLY FOLEY  
SONOMA CLEAN POWER  
50 OLD COURTHOUSE SQ., STE. 605  
SANTA ROSA, CA 95404  
FOR: SONOMA CLEAN POWER

STEVEN S. SHUPE  
GENERAL COUNSEL  
SONOMA CLEAN POWER AUTHORITY  
50 SANTA ROSA AVE., 5TH FL.  
SANTA ROSA, CA 95404  
FOR: SONOMA CLEAN POWER AUTHORITY

KELLIE SMITH  
POLICY DIR.  
CAL. ENERGY EFFICIENCY INDUSTRY COUNCIL  
1535 FARMERS LANE, SUITE 312  
SANTA ROSA, CA 95405  
FOR: CALIFORNIA ENERGY EFFICIENCY INDUSTRY COUNCIL (CEEIC)

KEVIN MESSNER  
SVP, POLICY & GOV'T RELATIONS  
ASSOCIATION OF HOME APPLIANCE MFG  
1512 WILLOW LANE  
DAVIS, CA 95616  
FOR: ASSOCIATION OF HOME APPLIANCE MANUFACTURERS

MELANIE GILLETTE  
WESTERN REGULATORY AFAAIRS  
ENERNOC, INC.  
115 HAZELMERE DRIVE  
FOLSOM, CA 95630  
FOR: ENERNOC, INC.

ERIC EISENHAMMER  
COALITION OF ENERGY USERS  
4010 FOOTHILLS BLVD., STE 103 NO. 115  
ROSEVILLE, CA 95747  
FOR: COALITION OF ENERGY USERS

DAN GRIFFITHS  
ATTORNEY  
BRAUN BLAISING MCLAUGHLIN & SMITH, P.C.  
915 L STREET, SUITE 1480  
SACRAMENTO, CA 95814  
FOR: CITY OF LANCASTER

JIM HAWLEY  
PRINCIPAL  
DEWEY SQUARE GROUP, LLC  
1020 16TH STREET, SUITE 20  
SACRAMENTO, CA 95814  
FOR: MISSION: DATA

JUSTIN WYNNE  
ATTORNEY  
BRAUN BLAISING MCLAUGHLIN & SMITH, P.C.  
915 L STREET, SUITE 1480  
SACRAMENTO, CA 95814  
FOR: CALIFORNIA MUNICIPAL UTILITIES ASSOCIATION (CMUA)

THOMAS A. ENSLOW  
ATTORNEY  
ADAMS BROADWELL JOSEPH AND CARDOZO  
520 CAPITOL MALL, STE. 350  
SACRAMENTO, CA 95814  
FOR: JOINT COMMITTEE ON ENERGY AND ENVIRONMENTAL POLICY (JCEEP)

THOMAS A. ENSLOW  
ADAMS BROADWELL JOSEPH AND CARDOZO  
520 CAPITOL MALL, SUITE 350  
SACRAMENTO, CA 95814  
FOR: CALIFORNIA STATE LABOR MANAGEMENT COOPERATION COMMITTEE-FOR THE INTERNATIONAL BROTHERHOOD OF ELECTRICAL

THOMAS A. ENSLOW  
ADAMS BROADWELL JOSEPH & CARDOZO  
520 CAPITOL MALL, SUITE 350  
SACRAMENTO, CA 95814-4715  
FOR: CALIFORNIA CONSTRUCTION INDUSTRY LABOR MANAGEMENT COOPERATION TRUST (CCILMCT)

WORKERS / THE NATIONAL ELECTRICAL  
CONTRACTORS ASSOCIATION (LMCC)

THOMAS ENSLOW  
ADAMS BROADWELL JOSEPH & CARDOZO  
520 CAPITOL MALL, SUITE 350  
SACRAMENTO, CA 95814-4715  
FOR: COALITION FOR ENERGY EFFICIENCY  
(CEE)

LAURA TAYLOR  
ATTORNEY  
BRAUN BLAISING MCLAUGHLIN & SMITH, P.C.  
915 L STREET, STE. 1480  
SACRAMENTO, CA 95822  
FOR: SILICON VALLEY CLEAN ENERGY  
AUTHORITY

JOHN LARREA  
CALIFORNIA LEAGUE OF FOOD PROCESSORS  
1755 CREEKSIDE OAKS DRIVE, STE 250  
SACRAMENTO, CA 95833  
FOR: CALIFORNIA LEAGUE OF FOOD  
PROCESSORS

KAREN NORENE MILLS  
ATTORNEY  
CALIFORNIA FARM BUREAU FEDERATION  
2300 RIVER PLAZA DRIVE  
SACRAMENTO, CA 95833  
FOR: CALIFORNIA FARM BUREAU FEDERATION

ROBERT MOWRIS  
PROFESSIONAL ENGINEER  
ROBERT MOWRIS & ASSOCIATES, INC.  
PO BOX 2366  
OLYMPIC VALLEY, CA 96146  
FOR: ROBERT MOWRIS & ASSOCIATES, INC.

SAM SIRKIN  
VP - PROGRAM DEVELOPMENT  
JACO ENVIRONMENTAL, INC.  
6908 SW 37TH  
PORTLAND, OR 97219  
FOR: JACO ENVIRONMENTAL, INC. (JACO)

TOM ECKHART  
CEO  
CAL-UCONS  
10612 NE 46TH STREET  
KIRKLAND, WA 98033  
FOR: CAL-UCONS, INC.

JACOB OSTER  
ENERGYSAVVY  
159 SOUTH JACKSON STREET, SUITE 420  
SEATTLE, WA 98102  
FOR: ENERGYSAVVY

## Information Only

---

AARON (YICHEN) LU  
PROGRAM COORDINATOR  
CITY OF SAN DIEGO  
EMAIL ONLY  
EMAIL ONLY, CA 00000

ADAM SCHEER  
PACIFIC GAS AND ELECTRIC COMPANY  
EMAIL ONLY  
EMAIL ONLY, CA 00000

ALEJANDRA MEJIA  
EMAIL ONLY  
EMAIL ONLY, CA 00000

ALICE STOVER  
CLEAN ENERGY  
EMAIL ONLY  
EMAIL ONLY, CA 00000

ALISSA BURGER  
CENTER FOR SUSTAINABLE ENERGY  
EMAIL ONLY  
EMAIL ONLY, CA 00000

ALLAN LEE  
EXEC. DIR., ENERGY SERVICES DIVISION  
CADMUS  
EMAIL ONLY  
EMAIL ONLY, OR 00000

ALLAN RAGO  
 QUALITY CONSERVATION SERVICES, INC.  
 EMAIL ONLY  
 EMAIL ONLY, CA 00000

ANDRA PLIGAVKO  
 EMAIL ONLY  
 EMAIL ONLY, CA 00000

ANDREW CAMPBELL  
 EXEC. DIR., ENERGY INSTITUTE AT HAAS  
 UNIVERSITY OF CALIFORNIA, BERKELEY  
 EMAIL ONLY  
 EMAIL ONLY, CA 00000

ANNETTE BEITEL  
 FUTURE ENERGY ENTERPRISES-CAL.TECH. FORM  
 EMAIL ONLY  
 EMAIL ONLY, CA 00000

ARLEEN NOVOTNEY  
 ACCESS / SCF  
 EMAIL ONLY  
 EMAIL ONLY, CA 00000

BARBARA BARKOVICH  
 CONSULTANT  
 BARKOVICH & YAP  
 EMAIL ONLY  
 EMAIL ONLY, CA 00000

BECKIE MENTEN  
 EFFICIENCY COORDINATOR  
 MARIN CLEAN ENERGY  
 EMAIL ONLY  
 EMAIL ONLY, CA 00000

BRIAN SMITH  
 PACIFIC GAS AND ELECTRIC COMPANY  
 EMAIL ONLY  
 EMAIL ONLY, CA 00000

CAROL YIN  
 YINSIGHT, INC  
 EMAIL ONLY  
 EMAIL ONLY, CA 00000

CAROLINE CHEN  
 EMAIL ONLY  
 EMAIL ONLY, CA 00000

CAROLINE M. FRANCIS  
 PACIFIC GAS AND ELECTRIC COMPANY  
 EMAIL ONLY  
 EMAIL ONLY, CA 00000

CAROLINE MCCORMACK  
 CALIFORNIA HOUSING PARTNERSHIP  
 EMAIL ONLY  
 EMAIL ONLY, CA 00000

CASE COORDINATION  
 PACIFIC GAS AND ELECTRIC COMPANY  
 EMAIL ONLY  
 EMAIL ONLY, CA 00000

CASSANDRA FELICIANO  
 REGULATORY CASE MANAGER  
 PACIFIC GAS AND ELECTRIC COMPANY  
 EMAIL ONLY  
 EMAIL ONLY, CA 00000

CATHIE A. ALLEN  
 PACIFICORP  
 EMAIL ONLY  
 EMAIL ONLY, CA 00000

CHUCK BUCK  
 MANAGER, REGULATORY AFFAIRS  
 OPOWER  
 EMAIL ONLY  
 EMAIL ONLY, CA 00000

CORINNE M. SIERZANT  
 SOUTHERN CALIFORNIA GAS COMPANY  
 EMAIL ONLY  
 EMAIL ONLY, CA 00000

CORY SCOTT  
 PACIFICORP  
 EMAIL ONLY  
 EMAIL ONLY, NV 00000

CRAIG TYLER  
 TYLER & ASSOCIATES

DAMON FRANZ  
 DIRECTOR - POLICY & ELECTRICITY MARKETS



EMAIL ONLY  
EMAIL ONLY, CA 00000

SOLARCITY  
EMAIL ONLY  
EMAIL ONLY, CA 00000

DAVID HUANG  
LEGAL FELLOW  
THE GREENLINING INSTITUTE  
EMAIL ONLY  
EMAIL ONLY, CA 00000

DORREN CARUTH  
PACIFIC GAS AND ELECTRIC COMPANY  
EMAIL ONLY  
EMAIL ONLY, CA 00000

ELI CAUDILL  
CLEARERESULT  
EMAIL ONLY  
EMAIL ONLY, CA 00000

ELI HARLAND  
CALIFORNIA ENERGY COMMISSION  
ENERGY RESEARCH & DEVELOPMENT DIV.  
EMAIL ONLY  
EMAIL ONLY, CA 00000

EMILY SANGI  
DAVIS WRIGHT TREMAINE, LLP  
EMAIL ONLY  
EMAIL ONLY, CA 00000

ERIC EBERHARDT  
ASSOCIATE DIRECTOR ENERGY SERVICES  
UNIVERSITY OF CALIF. OFFICE OF THE PRES.  
EMAIL ONLY  
EMAIL ONLY, CA 00000

GREG WIKLER  
DIR - ENERGY  
NAVIGANT CONSULTING, INC.  
EMAIL ONLY  
EMAIL ONLY, CA 00000

HALLEY FITZPATRICK  
PACIFIC GAS AND ELECTRIC COMPANY  
EMAIL ONLY  
EMAIL ONLY, CA 00000

HANNA GRENE  
CENTER FOR SUSTAINBLE ENERGY  
EMAIL ONLY  
EMAIL ONLY, CA 00000

JEAN SHELTON  
ITRON  
EMAIL ONLY  
EMAIL ONLY, CA 00000

JENNIFER BERG  
BAYREN PROJECT MANAGER  
ASSOCIATION OF BAY AREA GOVERNMENTS  
EMAIL ONLY  
EMAIL ONLY, CA 00000

JENNY ROECKS  
EMAIL ONLY  
EMAIL ONLY, CA 00000

JEREMY WAEN  
SR. REGULATORY ANALYST  
MARIN CLEAN ENERGY  
EMAIL ONLY  
EMAIL ONLY, CA 00000

JESSICA COHEN  
MANAGEMENT FOLLOW/PROGRAM MANAGER  
L.A.COUNTY OFFICE OF SUSTAINABILITY  
EMAIL ONLY  
EMAIL ONLY, CA 00000

JESSICA WAGGONER  
PACIFIC GAS AND ELECTRIC COMPANY  
EMAIL ONLY  
EMAIL ONLY, CA 00000

JOHN CAVALLI  
ITRON  
EMAIL ONLY  
EMAIL ONLY, CA 00000

JOHN JONES  
BUILDING PERFORMANCE INSTITUTE, INC.

JON VENCIL  
SR. CONSULTANT, MKT WEST

EMAIL ONLY  
EMAIL ONLY, CA 00000

DNV GL  
EMAIL ONLY  
EMAIL ONLY, CA 00000

KATIE ELLIOTT  
ENERGY EFFICIENCY PROGRAM SPECIALIST  
MARIN CLEAN ENERGY  
EMAIL ONLY  
EMAIL ONLY, CA 00000

KATY ROSENBERG  
ALCANTAR & KAHL  
EMAIL ONLY  
EMAIL ONLY, CA 00000

LINDSEY HAWES  
CENTER FOR SUSTAINABLE ENERGY  
EMAIL ONLY  
EMAIL ONLY, CA 00000

LIZ OH  
CENTER FOR SUSTAINABLE ENERGY  
EMAIL ONLY  
EMAIL ONLY, CA 00000

LUCY MORRIS  
PACIFIC GAS AND ELECTRIC COMPANY  
EMAIL ONLY  
EMAIL ONLY, CA 00000

LUJUANA MEDINA  
SOCALGAS  
EMAIL ONLY  
EMAIL ONLY, CA 00000

MARC COSTA  
ENERGY COALITION  
EMAIL ONLY  
EMAIL ONLY, CA 00000

MARIA STAMAS  
LEGAL FELLOW, ENERGY PROGRAM  
NATURAL RESOURCES DEFENSE COUNCIL  
EMAIL ONLY  
EMAIL ONLY, CA 00000

MATT BOGOSHIAN  
CHIEF STRATEGY OFFICER & GEN.COUNSEL  
REV  
EMAIL ONLY  
EMAIL ONLY, CA 00000

MCE REGULATORY  
MARIN CLEAN ENERGY  
EMAIL ONLY  
EMAIL ONLY, CA 00000

MEGHAN DEWEY  
MGR - EE POLICY / STRATEGY  
PACIFIC GAS AND ELECTRIC COMPANY  
EMAIL ONLY  
EMAIL ONLY, CA 00000

MERRIAN BORGESON  
SR. SCIENTIST  
NATURAL RESOURCES DEFENSE COUNCIL  
EMAIL ONLY  
EMAIL ONLY, CA 00000

MICHAEL ALCANTAR  
ALCANTAR & KAHL  
EMAIL ONLY  
EMAIL ONLY, CA 00000

MICHAEL NORBECK  
PACIFIC GAS AND ELECTRIC COMPANY  
EMAIL ONLY  
EMAIL ONLY, CA 00000

MIKE CADE  
ALCANTAR & KAHL  
EMAIL ONLY  
EMAIL ONLY, CA 00000

MIKE RUFO  
ITRON  
EMAIL ONLY  
EMAIL ONLY, CA 00000

MISTI BRUCERI  
MISTI BRUCERI & ASSOCIATES, LLC  
EMAIL ONLY  
EMAIL ONLY, CA 00000

MRW ASSOCIATES  
MRW & ASSOCIATES  
EMAIL ONLY  
EMAIL ONLY, CA 00000

MYRON GRAESSLE  
 LOCKEED MARTIN ENERGY  
 EMAIL ONLY  
 EMAIL ONLY, CA 00000

NIKHIL GANDHI  
 EMAIL ONLY  
 EMAIL ONLY, CA 00000

PATRICK FERGUSON  
 ATTORNEY  
 DAVIS WRIGHT TREMAINE, LLP  
 EMAIL ONLY  
 EMAIL ONLY, CA 00000

PATRICK THACHER  
 MCE CLEAN ENERGY  
 EMAIL ONLY  
 EMAIL ONLY, CA 00000

RAFAEL FRIEDMANN  
 PACIFIC GAS AND ELECTRIC COMPANY  
 EMAIL ONLY  
 EMAIL ONLY, CA 00000

RICARDO AMON  
 FOOD INDUSTRY ENERGY SPECIALIST  
 CALIF. INST. OF FOOD & AGRI. RESEARCH  
 UC - DAVIS  
 EMAIL ONLY  
 EMAIL ONLY, CA 00000

SAMUEL HARVEY  
 KEYES, FOX AND WIEDMAN LLP  
 EMAIL ONLY  
 EMAIL ONLY, CA 00000

SEAN MACKAY  
 PACIFIC GAS AND ELECTRIC COMPANY  
 EMAIL ONLY  
 EMAIL ONLY, CA 00000

SEPHRA A. NINOW  
 REGULATORY AFFAIRS MGR.  
 CENTER FOR SUSTAINABLE ENERGY  
 EMAIL ONLY  
 EMAIL ONLY, CA 00000

SHAHANA SAMIULLAH  
 SOUTHERN CALIFORNIA EDISON COMPANY  
 EMAIL ONLY  
 EMAIL ONLY, CA 00000

STEVEN GUERRY  
 PROGRAM CONSULTANT  
 BKI  
 EMAIL ONLY  
 EMAIL ONLY, CA 00000

SUSIE BERLIN  
 ATTORNEY AT LAW  
 LAW OFFICES OF SUSIE BERLIN  
 EMAIL ONLY  
 EMAIL ONLY, CA 00000

TIM OLSEN  
 ENERGY COALITION  
 EMAIL ONLY  
 EMAIL ONLY, CA 00000

MRW & ASSOCIATES, LLC  
 EMAIL ONLY  
 EMAIL ONLY, CA 00000

DAVIS WRIGHT TREMAINE LLP  
 EMAIL ONLY  
 EMAIL ONLY, CA 00000

KAREN TERRANOVA  
 ALCANTAR & KAHL  
 EMAIL ONLY  
 EMAIL ONLY, CA 00000-0000

ROBERT KASMAN  
 PACIFIC GAS AND ELECTRIC COMPANY  
 EMAIL ONLY  
 EMAIL ONLY, CA 00000-0000

JEFF PERKINS  
 ERS  
 120 WATER STREET, SUITE 350  
 NORTH ANDOVER, MA 01845

ERIKA DIAMOND  
ENERGYHUB  
232 3RD STREET, SUITE 201  
BROOKLYN, NY 11215

LAURA KIER  
ENERGYHUB  
232 3RD STREET  
BROOKLYN, NY 11215

RUTH HUPART  
1220 19TH STREET, NW, STE. 800  
WASHINGTON, DC 20036

KATHERINE JOHNSON  
JOHNSON CONSULTING GROUP  
1033 LINDFIELD DRIVE  
FREDERICK, MD 21702

RACHEL HOLMES  
APPLIANCES RECYCLING CENTER OF AM., INC.  
7400 EXCELSIOR BLVD.  
MINNEAPOLIS, MN 55426

JACK CAMERON  
PRESIDENT  
APPLIANCES RECYCLING CENTERS OF AM., INC  
7400 EXCELSIOR BLVD  
MINNEAPOLIS, MN 55426-4517

DAVID P. LOWREY  
DIRECTOR, REGULATORY STRATEGY  
COMVERGE, INC.  
999 18TH STREET, SUITE 2300  
DENVER, CO 80202

KELLY CRANDALL  
EQ RESEARCH, LLC  
1580 LINCOLN ST., STE. 800  
DENVER, CO 80203

LISA HOUGH  
SIMPLE ENERGY  
1215 SPRUCE ST., STE. 301  
BOULDER, CO 80302

ADAM BLOCK  
MANAGER, REGULATORY AFFAIRS  
SIMPLE ENERGY, INC.  
1215 SPRUCE STREET, STE. 301  
BOULDER, CO 80304

CAMERON BROOKS  
E9 ENERGY INSIGHT  
1877 BROADWAY, SUITE 100  
BOULDER, CO 80304

PETER C. JACOBS  
BUILDING METRICS INC.  
2540 FRONTIER AVE. SUITE 100  
BOULDER, CO 80304

DAVID C. CLARK  
ADVISOR  
ENERGY EFFICIENCY INC.  
595 S. BLUFF ST., NO. 5  
ST. GEORGE, UT 84770

JULIE RICHARDSON  
PRESIDENT  
ENERGY EFFICIENCY INC.  
595 S. BLUFF ST., NO. 5  
ST. GEORGE, UT 84770  
FOR: ENERGY EFFICIENCY INC. (EEI)

CYNTHIA K. MITCHELL  
ENERGY ECONOMICS INC.  
530 COLGATE COURT  
RENO, NV 89503

ALMA MENA WILLIAMSON  
SOUTHERN CALIFORNIA GAS COMPANY  
555 W. 5TH STREET, M.L. 19A7  
LOS ANGELES, CA 90013

ANDREW NIH  
SOUTHERN CALIFORNIA GAS COMPANY  
555 WEST FIFTH ST., GT19A7  
LOS ANGELES, CA 90013

ANDREW STEINBERG  
REGULATORY POLICY & REPORTING MGR.  
SOUTHERN CALIFORNIA GAS COMPANY  
555 W. FIFTH STREET, GT19A7  
LOS ANGELES, CA 90013

DARREN HANWAY

DAVID KIM

SOUTHERN CALIFORNIA GAS COMPANY  
555 WEST FIFTH ST., MAIL STOP GT19A7  
LOS ANGELES, CA 90013

SOUTHERN CALIFORNIA GAS COMPANY  
555 WEST 5TH STREET  
LOS ANGELES, CA 90013

DERRICK CLIFTON  
SOUTHERN CALIFORNIA GAS COMPANY  
555 W. 5TH STREET  
LOS ANGELES, CA 90013

ELIZABETH BAIRE  
REGULATORY MGR  
SOUTHERN CALIFORNIA GAS COMPANY  
555 W. FIFTH ST., GT14D6  
LOS ANGELES, CA 90013

ERIN PALERMO  
SOUTHERN CALIFORNIA GAS COMPANY  
555 W 5TH STREET  
LOS ANGELES, CA 90013

JEFF SALAZAR  
SOUTHERN CALIFORNIA GAS COMPANY  
555 W. FIFTH STREET, GT14D6  
LOS ANGELES, CA 90013

JESSE JOHN MARTINEZ  
SEMPRA UTILITIES  
555 W. 5TH ST  
LOS ANGELES, CA 90013

JOSEPH MOCK  
REGULATORY CASE MGR.  
SOUTHERN CALIFORNIA GAS COMPANY  
555 WEST 5TH ST., STE 1400, GT14D6  
LOS ANGELES, CA 90013

JOYCE KWOK  
CUSTOMER PROGRAMS & ASSISTANCE  
SOUTHERN CALIFORNIA GAS COMPANY  
555 WEST FIFTH STREET, GT19A7  
LOS ANGELES, CA 90013

KENDRA TALLEY  
CASE MGR.  
SOUTHERN CALIFORNIA GAS COMPANY  
555 W. FIFTH STREET, GT14D6  
LOS ANGELES, CA 90013

LETICIA AYALA  
SOUTHERN CALIFORNIA GAS COMPANY  
555 WEST 5TH STREET  
LOS ANGELES, CA 90013

MARK A. REYNA  
REGULATORY POLICY ADVISOR  
SOUTHERN CALIFORNIA GAS COMPANY  
555 W. FIFTH ST. GT19A8  
LOS ANGELES, CA 90013

MARK HERVEY  
SOUTHERN CALIFORNIA GAS COMPANY  
555 W. FIFTH STREET  
LOS ANGELES, CA 90013

MARK HUERTA  
SOUTHERN CA GAS COMPANY  
555 WEST 5TH STREET  
LOS ANGELES, CA 90013

PAUL DEANG  
CUSTOMER PROGRAM  
SOUTHERN CALIFORNIA GAS COMPANY  
555 W. 5TH STREET  
LOS ANGELES, CA 90013

RONALD VAN DER LEEDEN  
DIR. - REGULATORY AFFAIRS  
SOUTHERN CALIFORNIA GAS COMPANY  
555 W. FIFTH STREET, GT14D6  
LOS ANGELES, CA 90013

CARLOS A. H. VAQUERANO  
EXECUTIVE DIR.  
SALVADORAN AMERICAN LEADERSHIP  
1625 WEST OLYMPIC BLVD.  
LOS ANGELES, CA 90015  
FOR: SALVADORAN AMERICAN LEADERSHIP AND  
EDUCATIONAL FUND (SALEF)

DAVID A. COHEN  
CENTER FOR SUSTAINABLE ENERGY  
617 WEST 7TH STREET, SUITE 305  
LOS ANGELES, CA 90017

JAY LUBOFF  
 ASSOC DIR - ENERGY  
 NAVIGANT  
 515 S. FLOWER STREET, STE. 3500  
 LOS ANGELES, CA 90071

MABELL GARCIA PAINE  
 PRINCIPAL  
 ICF INTERNATIONAL  
 601 W 5TH STREET, STE. 900  
 LOS ANGELES, CA 90071

LENA LUNA  
 SR. ENERGY PROJECT MGR.  
 SO. BAY CITIES COUNCIL OF GOVERNMENTS  
 20285 S. WESTERN AVE., STE. 100  
 TORRANCE, CA 90501

INGER GOODMAN  
 REGULATORY AFFAIRS MANAGER  
 COMMERCE ENERGY, INC.  
 6 CENTERPOINTE DRIVE, STE. 750  
 LA PALMA, CA 90623

AARON KLEMM  
 CHIEF, ENERGY & SUSTAINABILITY  
 CALIFORNIA STATE UNIVERSITY  
 401 GOLDEN SHORE  
 LONG BEACH, CA 90802-4210

GREGORY S.G. KLATT  
 ATTORNEY  
 DOUGLASS & LIDDELL  
 4766 PARK GRANADA, STE. 209  
 CALABASAS, CA 91302

CASE ADMINISTRATION  
 SOUTHERN CALIFORNIA EDISON COMPANY  
 8631 RUSH STREET  
 ROSEMEAD, CA 91770

CHARISSE BURNETT  
 SO. CALIFORNIA EDISON COMPANY  
 1515 WALNUT GROVE AVENUE, 4TH FLR  
 ROSEMEAD, CA 91770

FRANK W. HARRIS  
 REGULATORY ECONOMIST  
 SOUTHERN CALIFORNIA EDISON  
 2244 WALNUT GROVE  
 ROSEMEAD, CA 91770

JANET COMBS, ESQ.  
 SR. ATTORNEY  
 SOUTHERN CALIFORNIA EDISON COMPANY  
 2244 WALNUT GROVE AVENUE  
 ROSEMEAD, CA 91770

LISA TOBIAS  
 PARALEGAL  
 SOUTHERN CALIFORNIA EDISON COMPANY  
 2244 WALNUT GROVE AVE., PO BOX 800  
 ROSEMEAD, CA 91770

RICHARD SPERBERG  
 ONSITE ENERGY CORP.  
 2701 LOKER AVE. W., STE. 107  
 CARLSBAD, CA 92010

DONALD C. LIDDELL  
 ATTORNEY  
 DOUGLASS & LIDDELL  
 2928 2ND AVENUE  
 SAN DIEGO, CA 92103

LESLIE OWASHI  
 SR. CONSULTANT  
 DNV GL - ENERGY  
 3605 FIFTH AVE.  
 SAN DIEGO, CA 92103  
 FOR: KEMA SERVICES INC.

ANNLYN M. FAUSTINO  
 REGULATORY CASE ANALYST & SUPPORT  
 SDG&E/SCGC  
 8330 CENTURY PARK COURT, CP31E  
 SAN DIEGO, CA 92123

DEAN A. KINPORTS  
 REGULATORY CASE MGR.  
 SAN DIEGO GAS & ELECTRIC COMPANY  
 8330 CENTURY PARK COURT, CP32F  
 SAN DIEGO, CA 92123

JOSHUA THOMPSON  
 SAN DIEGO GAS & ELECTRIC COMPANY  
 8690 BALBOA AVE  
 SAN DIEGO, CA 92123

ROLAND G MOLLEN  
 SAN DIEGO GAS & ELECTRIC COMPANY  
 8690 BALBOA AVE  
 SAN DIEGO, CA 92123

CENTRAL FILES  
 SAN DIEGO GAS & ELECTRIC COMPANY  
 8330 CENTURY PARK CT, CP31-E  
 SAN DIEGO, CA 92123-1530

ATHENA BESA  
 CUSTOMER PROGRAMS & POLICY MANAGER  
 SAN DIEGO GAS & ELECTRIC COMPANY  
 8335 CENTURY PARK COURT, CP12H  
 SAN DIEGO, CA 92123-1569

PAUL MARCONI  
 BEAR VALLEY ELECTRIC SERVICE  
 42020 GARSTIN DRIVE, PO BOX 1547  
 BIG BEAR LAKE, CA 92315

ARLIS REYNOLDS  
 THE CADMUS GROUP, INC.  
 4 VENTURE  
 IRVINE, CA 92618

SHEENA TRAN  
 ICF INTERNATIONAL  
 1 ADA, SUITE 100  
 IRVINE, CA 92618

JEFF HIRSCH  
 JAMES J. HIRSCH & ASSOCIATES  
 12185 PRESILLA ROAD  
 SANTA ROSA VALLEY, CA 93012-9243

JOHN AVINA  
 ABRAXAS ENERGY CONSULTING, LLC  
 811 PALM STREET  
 SAN LUIS OBISPO, CA 93401

DEEANN TOZLIAN  
 STRATEGIC PLANNING RESEARCH MGR  
 RICHARD HEATH & ASSOCIATES, INC.  
 590 W LOCUST AVENUE, SUITE 103  
 FRESNO, CA 93650

ANDREW YIP  
 MGR - BUS. DEVELOPMENT (RBNA/PJ-BGT)  
 ROBERT BOSCH LLC  
 101 JEFFERSON DRIVE  
 MENLO PARK, CA 94025

STEPHEN STOLTE  
 COORDINATOR - OFFICE OF SUSTAINABILITY  
 COUNTY OF SAN MATEO  
 400 COUNTY CENTER  
 REDWOOD CITY, CA 94063

NICK BROD  
 CLEARRESULT  
 1100 GRUNDY LANE, STE. 100  
 SAN BRUNO, CA 94066

KATHLEEN BRYAN  
 S.F. DEPT. OF THE ENVIRONMENT  
 1455 MARKET STREET, SUITE 1200  
 SAN FRANCISCO, CA 94102

CLEANPOWERSF REGULATORY  
 SFPUC  
 525 GOLDEN GATE AVE.  
 SAN FRANCISCO, CA 94102

ANN KELLY  
 DEPARTMENT OF THE ENVIRONMENT  
 CITY & COUNTY OF SAN FRANCISCO  
 1145 MARKET STREET, SUITE 1200  
 SAN FRANCISCO, CA 94103

CAL BROOMHEAD  
 DEPT OF ENVIRONMENT, ENERGY SECTION  
 CITY AND COUNTY OF SAN FRANCISCO  
 1145 MARKET STREET, SUITE 1200  
 SAN FRANCISCO, CA 94103

ELISE TORRES  
 STAFF ATTORNEY  
 THE UTILITY REFORM NETWORK  
 785 MARKET STREET, SUITE 1400  
 SAN FRANCISCO, CA 94103

JEFF GUILD  
 ENOVITY, INC.  
 100 MONTGOMERY STREET, SUITE 600  
 SAN FRANCISCO, CA 94104  
 FOR: ENOVITY, INC.

KATY MORSONY  
 ALCANTAR & KAHL  
 345 CALIFORNIA STREET, STE. 2450  
 SAN FRANCISCO, CA 94104  
 FOR: ENERGY PRODUCERS AND USERS  
 COALITION

AMUL SATHE  
 NAVIGANT CONSULTING  
 1 MARKET ST., SPEAR TOWER STE.1200  
 SAN FRANCISCO, CA 94105

AMY BARR  
 PACIFIC GAS AND ELECTRIC COMPANY  
 77 BEALE STREET, MC B23A  
 SAN FRANCISCO, CA 94105  
 FOR: PACIFIC GAS AND ELECTRIC COMPANY

BRUCE PERLSTEIN  
 DIRECTOR, ADVISORY  
 KPMG LLP  
 55 SECOND ST., STE. 1400  
 SAN FRANCISCO, CA 94105

CARA GOLDENBERG  
 DIAN GRUENEICH CONSULTING, LLC  
 201 MISSION STREET, SUITE 1200  
 SAN FRANCISCO, CA 94105

DEREK JONES  
 NAVIGANT CONSULTING, INC.  
 ONE MARKET ST., SPEAR TOWER, SUITE 1200  
 SAN FRANCISCO, CA 94105

DUSTIN C. ELLIOTT  
 ATTORNEY  
 MORRISON & FOERSTER LLP  
 425 MARKET STREET  
 SAN FRANCISCO, CA 94105

JULIA LIBERZON  
 CASE MGR.  
 PACIFIC GAS AND ELECTRIC COMPANY  
 77 BEALE STREET, B9A  
 SAN FRANCISCO, CA 94105

MARY A. GANDESBERY, ESQ.  
 ATTORNEY  
 PACIFIC GAS AND ELECTRIC COMPANY  
 77 BEALE STREET, MS-B30A / PO BOX 7442  
 SAN FRANCISCO, CA 94105  
 FOR: PACIFIC GAS & ELECTRIC COMPNANY

MARY ANDERSON  
 PACIFIC GAS & ELECTRIC COMPANY  
 245 MARKET STREET, N4Q  
 SAN FRANCISCO, CA 94105

MATTHEW H. LEWIS  
 PACIFIC GAS & ELECTRIC COMPANY  
 77 BEALE ST, B27L  
 SAN FRANCISCO, CA 94105

MUSHTAQ AHMAD  
 NEXANT, INC.  
 101 SECOND STREET  
 SAN FRANCISCO, CA 94105

PRISCILLA JOHNSON  
 PACIFIC GAS & ELECTRIC COMPANY  
 245 MARKET STREET, N4Q  
 SAN FRANCISCO, CA 94105

RACHEL SACKMAN  
 STRATEGIC ANALYST  
 PACIFIC GAS & ELECTRIC COMPANY  
 245 MARKET STREET, NQ4  
 SAN FRANCISCO, CA 94105

TERRY FRY  
 VP, ENERGY MANAGEMENT  
 NEXANT INC  
 101 2ND STREET, 10TH FLOOR  
 SAN FRANCISCO, CA 94105

CHARLIE BUCK  
 MGR, MARKET DEV. & REGULATORY AFFAIRS  
 ORACLE / OPOWER  
 WEST DIVISION  
 680 FOLSOM STREET, 3RD FLOOR  
 SAN FRANCISCO, CA 94107

FRANCESCA WAHL  
 DEPUTY DIR - POLICY & ELECTRICITY MKTS  
 SOLARCITY CORPORATION  
 444 DE HARO ST., STE. 101  
 SAN FRANCISCO, CA 94107

SAMUEL GOLDING  
 PRESIDENT  
 COMMUNITY CHOICE PARTNERS, INC.  
 58 MIRABEL AVENUE

JILL N. JAFFE  
 NOSSAMAN LLP  
 50 CALIFORNIA STREET, 34TH FLOOR  
 SAN FRNACISCO, CA 94111



SAN FRANCISCO, CA 94110

MICAH FULLER  
PG&E  
245 MARKET STREET  
SAN FRANCISCO, CA 94111

SAMUEL P. KRASNOW  
V.P. - REGULATORY AFFAIRS  
FIRSTFUEL SOFTWARE, INC.  
ONE EMBARCADERO CENTER, SE. 1150  
SAN FRANCISCO, CA 94111

MARTIN MATTES  
NOSSAMAN LLP  
50 CALIFORNIA STREET, STE. 3400  
SAN FRANCISCO, CA 94111-4799

ALEJANDRA M. CUNNINGHAM  
2298 FULTON STREET  
SAN FRANCISCO, CA 94117

ALEJANDRA MEJIA  
FUTURE ENERGY ENTERPRISES-CAL.TECH. FORM  
2298 FULTON STRET  
SAN FRANCISCO, CA 94117

CALIFORNIA ENERGY MARKETS  
425 DIVISADERO ST STE 303  
SAN FRANCISCO, CA 94117-2242

MEGAN M. MYERS  
ATTORNEY  
LAW OFFICES OF SARA STECK MYERS  
122 - 28TH AVENUE  
SAN FRANCISCO, CA 94121

SARA STECK MYERS  
ATTORNEY AT LAW  
LAW OFFICES OF SARA STECK MYERS  
122 28TH AVENUE  
SAN FRANCISCO, CA 94121  
FOR: ENERNOC, INC.

RICK COUNIHAN  
NEST LABS, INC.  
3400 HILLVIEW AVENUE  
PALO ALTO, CA 94304

DIAN GRUENEICH  
STANFORD UNIVERSITY  
473 VIA ORTEGA, ROOM 387  
STANFORD, CA 94305

DAVID SIDDIQUI  
DIRECTOR  
CLEARERESULT  
1710 S. AMPHLETT BLVD., STE. 340  
SAN MATEO, CA 94402  
FOR: CLEARERESULT

BONNIE DATTA  
SIEMENS USA  
4000 E. THIRD AVENUE  
FOSTER CITY, CA 94404

DORAN MEAGHAN  
MCE CLEAN ENERGY  
781 LINCOLN AVE., STE. 320  
SAN RAFAEL, CA 94553

ANDREW MEIMAN, PE  
PRINCIPAL  
ARC ALTERNATIVES  
144 DONALD DRIVE  
MORAGA, CA 94556

JAMES E. MCMAHON  
FOUNDING DIRECTOR  
BETTER CLIMATE RESEARCH/POL. ANALYSIS  
138 BROOKFIELD DR.  
MORAGA, CA 94556-1747

DAVID DIAS  
BUSINESS REP.  
SHEET METAL WORKERS LOCAL 104  
2610 CROW CANYON ROAD  
SAN RAMON, CA 94583  
FOR: JOINT COMMITTEE ON ENERGY AND  
ENVIRONMENTAL POLICY (JCEEP)

ROBERT FRIED

FLOYD KENEIPP

ATKINSON, ANDELSON, LOYA, RUUD & ROMO  
5075 HOPYARD ROAD, SUITE 210  
PLEASANTON, CA 94588

TIERRA RESOURCE CONSULTANTS, INC.  
1200 MT. DIABLO BLVD., STE. 208  
WALNUT CREEK, CA 94596

DAVID THAYER  
PACIFIC GAS AND ELECTRIC COMPANY  
245 MARKET STREET, MC N6G  
SAN FRANCISCO, CA 94602

CHRIS ANN DICKERSON  
CAD CONSULTING  
720B CANYON OAKS DR.  
OAKLAND, CA 94605

ALLAN ROBLES  
LUCID  
304 12TH STREET, SUITE 3C  
OAKLAND, CA 94607

ALEX CHASE  
DIR  
COHEN VENTURES INC.  
449 15TH STREET  
OAKLAND, CA 94610  
FOR: COHEN VENTURES INC. DBA ENERGY  
SOLUTIONS

CARMEN HENRIKSON  
ASSOCIATE V.P., STRATEGY  
TRC SOLUTIONS  
436 14TH STREET, SUITE 1020  
OAKLAND, CA 94612

FRED COITO  
DNV GL  
155 GRAND AVENUE, SUITE 500  
OAKLAND, CA 94612

HANNAH ARNOLD  
OPINION DYNAMICS  
1999 HARRISON ST., STE. 1420  
OAKLAND, CA 94612

JENNIFER E. CANSECO  
HEAD OF SECTION, MARKET WEST  
DNV GL  
155 GRAND AVE., STE.500  
OAKLAND, CA 94612

JENNIFER MITCHELL-JACKSON  
PARTNER  
OPINION DYNAMICS  
1999 HARRISON ST., STE. 1420  
OAKLAND, CA 94612

MARGIE GARDNER  
EXECUTIVE DIRECTOR  
CAL. ENERGY EFFICIENCY INDUSTRY COUNCIL  
436 14TH STREET, SUITE 1020  
OAKLAND, CA 94612  
FOR: CALIFORNIA ENERGY EFFICIENCY  
INDUSTRY COUNCIL

MARY SUTTER  
OPINION DYNAMICS  
1999 HARRISON ST., STE. 1420  
OAKLAND, CA 94612

MIKHAIL HARAMATI  
ASSOCIATE  
OPINION DYNAMICS CORPORATION  
1999 HARRISON ST., STE. 1420  
OAKLAND, CA 94612

NINA MERCHANT-VEGA  
OPINION DYNAMICS  
1999 HARRISON ST., STE. 1420  
OAKLAND, CA 94612

OLIVIA PATTERSON  
OPINION DYNAMICS  
1999 HARRISON ST., STE. 1420  
OAKLAND, CA 94612

SEPIDEH SHAHINFARD  
THE CADMUS GROUP, INC.  
1901 HARRISON ST., NO. 1100  
OAKLAND, CA 94612

STEPHANIE WANG  
SR. POLICY ATTORNEY  
CENTER FOR SUSTAINABLE ENERGY  
426 17TH STREEET, SUITE 700  
OAKLAND, CA 94612

TAMI BUHR  
 OPINION DYNAMICS  
 1999 HARRISON ST., STE. 1420  
 OAKLAND, CA 94612

TED POPE  
 VICE PRESIDENT  
 ENERGY SOLUTION  
 449 15TH STREET  
 OAKLAND, CA 94612

TIM LINDL  
 COUNSEL  
 KEYES & FOX LLP  
 436 14TH STREET, STE. 1305  
 OAKLAND, CA 94612

MELISSA KASNITZ  
 ATTORNEY  
 CENTER FOR ACCESSIBLE TECHNOLOGY  
 3075 ADELIN STREET, STE. 220  
 BERKELEY, CA 94703

STEVE KROMER  
 SKEE  
 1911 9TH STREET B  
 BERKELEY, CA 94710

EDWARD VINE  
 LAWRENCE BERKELEY NATIONAL LABORATORY  
 BUILDING 90-2002  
 BERKELEY, CA 94720-8136

DANIEL GENTER  
 CUSTOMER PROGRAMS SPECIALIST  
 MARINE CLEAN ENERGY  
 1125 TAMALPAIS AVE.  
 SAN RAFAEL, CA 94901

JOHN PROCTOR  
 PROCTOR ENGINEERING GROUP, LTD  
 418 MISSION AVENUE  
 SAN RAFAEL, CA 94901

MARTHA SERIANZ  
 LEGAL OPERATIONS MGR.  
 MARIN CLEAN ENERGY  
 1125 TAMALPAIS AVENUE  
 SAN RAFAEL, CA 94901

NATHANIEL MALCOLM  
 REGULATORY LAW CLERK  
 MARIN CLEAN ENERGY  
 1125 TAMALPAIS AVENUE  
 SAN RAFAEL, CA 94901

SHALINI SWAROOP  
 REGULATORY & LEGISLATIVE COUNSEL  
 MARIN CLEAN ENERGY  
 1125 TAMALPAIS AVENUE  
 SAN RAFAEL, CA 94901

HANK RYAN  
 EXECUTIVE DIR.  
 SMALL BUSINESS CALIFORNIA (SB CALIF.)  
 750 - 47TH AVE., NO. 56  
 CAPITOLA, CA 95010

JENNIFER HOLMES  
 INDEPENDENT CONSULTANT  
 PO BOX 4235  
 SANTA CRUZ, CA 95063

NATALIE DE LEON  
 COUNTY OF SANTA CLARA  
 70 W. HEDDING  
 SAN JOSE, CA 95110

DAVID REYNOLDS  
 ERS  
 152 N. 3RD STREET, SUITE 520  
 SAN JOSE, CA 95112

JUSTIN P. LEVEQUE  
 CITY OF SAN JOSE-ENVIRONMENTAL SVCS DEPT  
 200 EAST SANTA CLARA STREET, 10TH FL.  
 SAN JOSE, CA 95113

JANET FERRARI  
 COMMERCIAL TEAM MANAGER  
 CONSOL  
 5757 PACIFIC AVENUE, SUITE 220  
 STOCKTON, CA 95207

LAUREN CASEY  
 CLIMATE PROTECTION PROGRAM MANAGER  
 SCTA/RCPA  
 490 MENDOCINO AVE., STE. 206  
 SANTA ROSA, CA 95401

ANNE ARQUIT NIEDERBERGER  
POLICY SOLUTIONS  
218 FOSS CREEK CIRCLE  
HEALDSBURG, CA 95448

KRISTIN HEINEMEIER  
WESTERN COOLING EFFICIENCY CENTER  
UNIVERSITY OF CALIFORNIA - DAVIS  
215 SAGE ST., SUITE 100  
DAVIS, CA 95616

SMITA GUPTA  
SR. ENERGY CONSULTANT  
ITRON, INC.  
330 MADSON PLACE  
DAVIS, CA 95618-6599

DELPHINE HOU  
CALIF. INDEPENDENT SYSTEMS OPERATOR  
250 OUTCROPPING WAY  
FOLSOM, CA 95630

JORDAN PINJUV  
COUNSEL  
CALIFORNIA INDEPENDENT SYSTEM OPERATOR  
250 OUTCROPPING WAY  
FOLSOM, CA 95630

CAMILLE STOUGH, ESQ.  
BRAUN BLAISING MCLAUGHLIN & SMITH PC  
915 L STREET, STE. 1480  
SACRAMENTO, CA 95814

JOSEPH OLDHAM  
LOCAL GOVERNMENT COMMISSION  
1303 J STREET, STE. 250  
SACRAMENTO, CA 95814

ROBERT CASTANEDA  
PROTEUS, INC.  
1830 N. DINUBA BLVD.  
VISALIA, CA 95814  
FOR: PROTEUS, INC.

SARAH TAHERI  
SO. CALIF. PUBLIC POWER AUTHORITY  
915 L STREET, STE. 1410  
SACRAMENTO, CA 95814  
FOR: SOUTHERN CALIFORNIA PUBLIC POWER  
AUTHORITY (SCPPA)

SCOTT BLAISING  
ATTORNEY  
BRAUN BLAISING MCLAUGHLIN & SMITH, P.C.  
915 L STREET, STE. 1480  
SACRAMENTO, CA 95814

STEVE SANDERS  
PROGRAM DIRECTOR  
INSTITUTE FOR LOCAL GOVERNMENT  
1400 K STREET, SUITE 205  
SACRAMENTO, CA 95814

STEVEN KELLY  
POLICY DIRECTOR  
INDEPENDENT ENERGY PRODUCERS ASSCIATION  
1215 K STREET, STE. 900  
SACRAMENTO, CA 95814

TONY BRUNELLO  
GREEN TECHNOLOGY LEADERSHIP GROUP  
980 9TH STREET, SUITE 2000  
SACRAMENTO, CA 95814  
FOR: MISSION: DATA

DANIEL L. CARDOZO  
ADAMS BROADWELL JOSEPH & CARDOZO  
520 CAPITOL MALL, STE. 350  
SACRAMENTO, CA 95814-4715

RONALD LIEBERT  
ATTORNEY AT LAW  
ELLISON SCHNEIDER HARRIS & DONLAN LLP  
2600 CAPITOL AVENUE, STE. 400  
SACRAMENTO, CA 95816

ROB NEENAN  
CALIFORNIA LEAGUE OF FOOD PROCESSORS  
1755 CREEKSIDE OAKS DRIVE, SUITE 250  
SACRAMENTO, CA 95833

ANN L. TROWBRIDGE  
ATTORNEY  
DAY CARTER & MURPHY LLP

JASON GREGORY  
ENERGYSAVVY  
205 SE SPOKANE ST., STE. 300

3620 AMERICAN RIVER DRIVE, SUITE 205  
SACRAMENTO, CA 95864

PORTLAND, OR 97202

DONALD BROOKHYSER  
ALCANTAR & KAHL LLP  
121 S.W. SALMON ST., STE. 1100  
PORTLAND, OR 97204

DULANE MORAN  
NEXANT  
317 SW ALDER ST., STE. 1000  
PORTLAND, OR 97204

DON JONES, JR.  
PACIFICORP  
825 NE MULTNOMAH, STE. 1500  
PORTLAND, OR 97232

ELI MORRIS  
PACIFICORP  
825 NE MULTNOMAH, STE. 1500  
PORTLAND, OR 97232

JOHN W. GOULD  
CAL-UCONS, INC.  
5737 SW 18TH AVE.  
PORTLAND, OR 97239

MICHAEL RICHARDSON  
VP - GLOBAL PROGRAM OPERATIONS  
TRANSFORMATIVE WAVES  
1012 CENTRAL AVE. SOUTH  
KENT, WA 98032

JENNIFER HOLMES  
ENERGY MARKET INNOVATIONS (EMI)  
83 COLUMBIA ST., STE/ 400  
SEATTLE, WA 98104

## State Service

---

AVA N. TRAN  
CPUC - ENERGY  
EMAIL ONLY  
EMAIL ONLY, CA 00000

CARMEN BEST  
CPUC - ENERGY  
EMAIL ONLY  
EMAIL ONLY, CA 00000

CATHLEEN A. FOGEL  
CPUC - ENERGY  
EMAIL ONLY  
EMAIL ONLY, CA 00000

CHRISTOPHER MYERS  
CALIFORNIA PUBLIC UTILITIES COMMISSION  
OFFICE OF RATEPAYER ADVOCATES  
EMAIL ONLY  
EMAIL ONLY, CA 00000

DANIEL BUCH  
REGULATORY ANALYST  
CPUC - ORA  
EMAIL ONLY  
EMAIL ONLY, CA 00000

DAVID ISMAILYAN  
CALIFORNIA ENERGY COMMISSION  
EMAIL ONLY  
EMAIL ONLY, CA 00000

DINA MACKIN  
CPUC - ENERGY  
EMAIL ONLY  
EMAIL ONLY, CA 00000

FRANK ALAN REYNOLDS  
CPUC - ENERGY  
EMAIL ONLY  
EMAIL ONLY, CA 00000

HAZLYN FORTUNE  
A.L.J. PRO TEM

JEANNE CLINTON  
CPUC - EXEC. DIV

CPUC - ENERGY  
 EMAIL ONLY  
 EMAIL ONLY, CA 00000

EMAIL ONLY  
 EMAIL ONLY, CA 00000

GEORGE S. TAGNIPES  
 CPUC - ENERGY  
 EMAIL ONLY  
 EMAIL ONLY, CA 00000

JEREMY BATTIS  
 CPUC - ENERGY  
 EMAIL ONLY  
 EMAIL ONLY, CA 00000

KATHERINE HARDY  
 CPUC - ENERGY  
 EMAIL ONLY  
 EMAIL ONLY, CA 00000

KATIE WU  
 CPUC - ENERGY  
 EMAIL ONLY  
 EMAIL ONLY, CA 00000

KAYODE KAJOPAIYE  
 CALIFORNIA PUBLIC UTILITIES COMMISSION  
 EMAIL ONLY  
 EMAIL ONLY, CA 00000

LISA PAULO  
 CPUC - ENERGY  
 EMAIL ONLY  
 EMAIL ONLY, CA 00000

MARTHA BROOK  
 CALIFORNIA ENERGY COMMISSION  
 EMAIL ONLY  
 EMAIL ONLY, CA 00000

MICHAEL COLVIN  
 CPUC - POLICY & PLANNING  
 EMAIL ONLY  
 EMAIL ONLY, CA 00000

MONA DEE DZVOVA  
 CPUC - ENERGY  
 EMAIL ONLY  
 EMAIL ONLY, CA 00000

PATRICK SAXTON  
 ADVISOR TO COMM. ANDREW MCALLISTER  
 CALIFORNIA ENERGY COMMISSION  
 EMAIL ONLY  
 EMAIL ONLY, CA 00000

PAULA GRUENDLING  
 CPUC - ENERGY  
 EMAIL ONLY  
 EMAIL ONLY, CA 00000

PETER FRANZESE  
 CPUC - ENERGY  
 EMAIL ONLY  
 EMAIL ONLY, CA 00000

PETER LAI  
 CPUC - ENERGY  
 EMAIL ONLY  
 EMAIL ONLY, CA 00000

PETER SKALA  
 CPUC - ENERGY  
 EMAIL ONLY  
 EMAIL ONLY, CA 00000

RORY COX  
 CPUC  
 EMAIL ONLY  
 EMAIL ONLY, CA 00000

TORY FRANCISCO  
 ENERGY  
 CALIFORNIA PUBLIC UTILITIES COMMISSION  
 EMAIL ONLY  
 EMAIL ONLY, CA 00000

ALEXANDER COLE  
 CALIF PUBLIC UTILITIES COMMISSION  
 ELECTRICITY PRICING AND CUSTOMER PROGRAM  
 AREA  
 505 VAN NESS AVENUE  
 SAN FRANCISCO, CA 94102-3214

ALEXANDER MERIGAN  
 CALIF PUBLIC UTILITIES COMMISSION  
 ENERGY EFFICIENCY BRANCH  
 AREA  
 505 VAN NESS AVENUE  
 SAN FRANCISCO, CA 94102-3214

FOR: ORA

HAL KANE  
 CALIF PUBLIC UTILITIES COMMISSION  
 ENERGY EFFICIENCY BRANCH  
 AREA  
 505 VAN NESS AVENUE  
 SAN FRANCISCO, CA 94102-3214

JENNIFER KALAFUT  
 CALIF PUBLIC UTILITIES COMMISSION  
 COMMISSIONER PETERMAN  
 ROOM 5303  
 505 VAN NESS AVENUE  
 SAN FRANCISCO, CA 94102-3214

JULIE A. FITCH  
 CALIF PUBLIC UTILITIES COMMISSION  
 DIVISION OF ADMINISTRATIVE LAW JUDGES  
 ROOM 5019  
 505 VAN NESS AVENUE  
 SAN FRANCISCO, CA 94102-3214

LOLA ODUNLAMI  
 CALIF PUBLIC UTILITIES COMMISSION  
 ENERGY EFFICIENCY BRANCH  
 AREA  
 505 VAN NESS AVENUE  
 SAN FRANCISCO, CA 94102-3214

MARIA AMPARO WORSTER  
 CALIF PUBLIC UTILITIES COMMISSION  
 ENERGY EFFICIENCY BRANCH  
 ROOM 4209  
 505 VAN NESS AVENUE  
 SAN FRANCISCO, CA 94102-3214

MARNA ANNING  
 CALIF PUBLIC UTILITIES COMMISSION  
 ENERGY EFFICIENCY BRANCH  
 AREA  
 505 VAN NESS AVENUE  
 SAN FRANCISCO, CA 94102-3214

MARYAM GHADESSI  
 CALIF PUBLIC UTILITIES COMMISSION  
 POLICY & PLANNING DIVISION  
 AREA 4-A  
 505 VAN NESS AVENUE  
 SAN FRANCISCO, CA 94102-3214

MARYAM MOZAFARI  
 CALIF PUBLIC UTILITIES COMMISSION  
 ENERGY EFFICIENCY BRANCH  
 AREA 4-A  
 505 VAN NESS AVENUE  
 SAN FRANCISCO, CA 94102-3214

PETER BIERMAYER  
 CALIF PUBLIC UTILITIES COMMISSION  
 ENERGY EFFICIENCY BRANCH  
 ROOM 4-A  
 505 VAN NESS AVENUE  
 SAN FRANCISCO, CA 94102-3214

REESE ROGERS  
 CALIF PUBLIC UTILITIES COMMISSION  
 ENERGY EFFICIENCY BRANCH  
 AREA  
 505 VAN NESS AVENUE  
 SAN FRANCISCO, CA 94102-3214

ROBERT HANSEN  
 CALIF PUBLIC UTILITIES COMMISSION  
 ENERGY EFFICIENCY BRANCH  
 AREA 2-C  
 505 VAN NESS AVENUE  
 SAN FRANCISCO, CA 94102-3214

ROSANNE O'HARA  
 CALIF PUBLIC UTILITIES COMMISSION  
 LEGAL DIVISION  
 AREA  
 505 VAN NESS AVENUE  
 SAN FRANCISCO, CA 94102-3214

STANLEY KUAN  
 CALIF PUBLIC UTILITIES COMMISSION  
 ELECTRICITY PRICING AND CUSTOMER PROGRAM  
 AREA  
 505 VAN NESS AVENUE  
 SAN FRANCISCO, CA 94102-3214

VALERIE KAO  
 CALIF PUBLIC UTILITIES COMMISSION  
 DIVISION OF ADMINISTRATIVE LAW JUDGES  
 AREA  
 505 VAN NESS AVENUE  
 SAN FRANCISCO, CA 94102-3214

ZHEN ZHANG  
 CALIF PUBLIC UTILITIES COMMISSION

CYNTHIA ROGERS  
 CALIFORNIA ENERGY COMMISSION

LEGAL DIVISION  
ROOM 5130  
505 VAN NESS AVENUE  
SAN FRANCISCO, CA 94102-3214  
FOR: ORA

1516 9TH STREET, MS-22  
SACRAMENTO, CA 95814

DEANA J. CARRILLO  
EXE. DIR  
CAEATFA  
915 CAPITOL MALL  
SACRAMENTO, CA 95814  
FOR: CALIFORNIA ALTERNATIVE ENERGY &  
ADVANCED TRANSPORTATION FINANCING  
AUTHORITY (CAEATFA)

ERIK JENSEN  
CALIFORNIA ENERGY COMMISSION  
1516 NINTH STREET  
SACRAMENTO, CA 95814

KEVIN FEIZI  
CALIF PUBLIC UTILITIES COMMISSION  
ENERGY EFFICIENCY BRANCH  
770 L Street, Suite 1250  
Sacramento, CA 95814

MIKHAIL HARAMATI  
CALIF PUBLIC UTILITIES COMMISSION  
POLICY & PLANNING DIVISION  
300 Capitol Mall  
Sacramento, CA 95814

MIRIAM JOFFE-BLOCK  
PROGRAM MGR.  
CAEATFA  
801 CAPITOL MALL  
SACRAMENTO, CA 95814  
FOR: CALIFORNIA ALTERNATIVE ENERGY AND  
ADVANCED TRANSPORTATION FINANCING  
AUTHORITY (CAEATFA); CALIF. HUB FOR  
ENERGY EFFICIENCY FINANCE (CHEEF)

WILLIAM DIETRICH  
MGR. - EFFICIENCY DIV.  
CALIFORNIA ENERGY COMMISSION  
1516 NINTH STREET, MS-26  
SACRAMENTO, CA 95814-5512

---

[TOP OF PAGE](#)  
[BACK TO INDEX OF SERVICE LISTS](#)