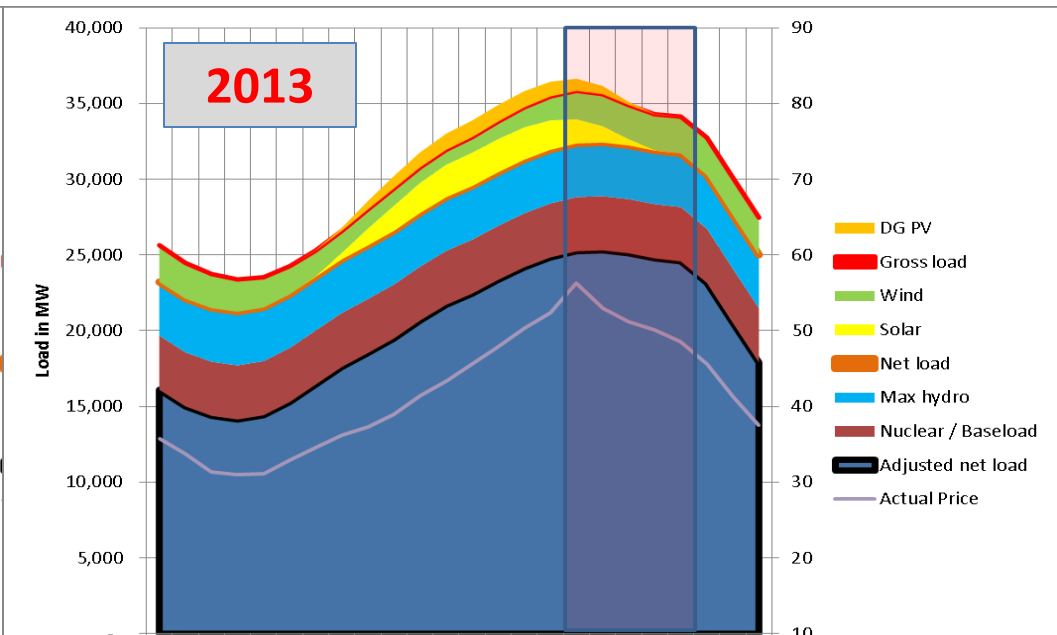
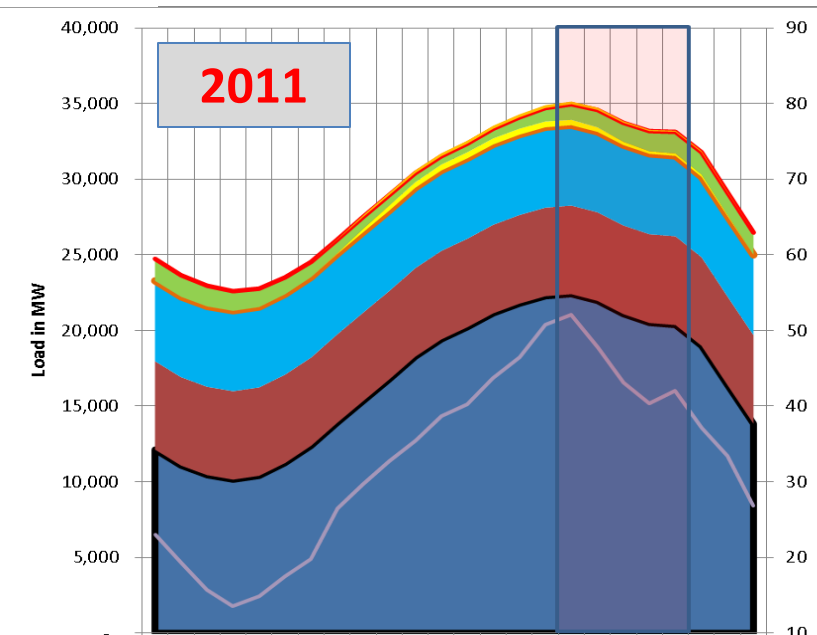


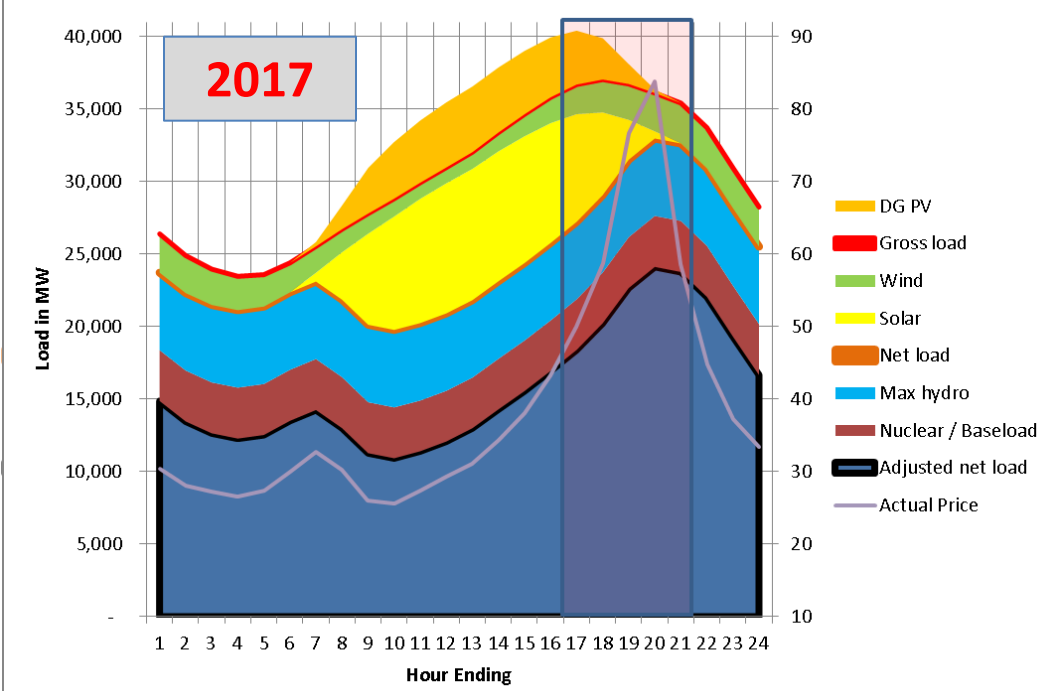
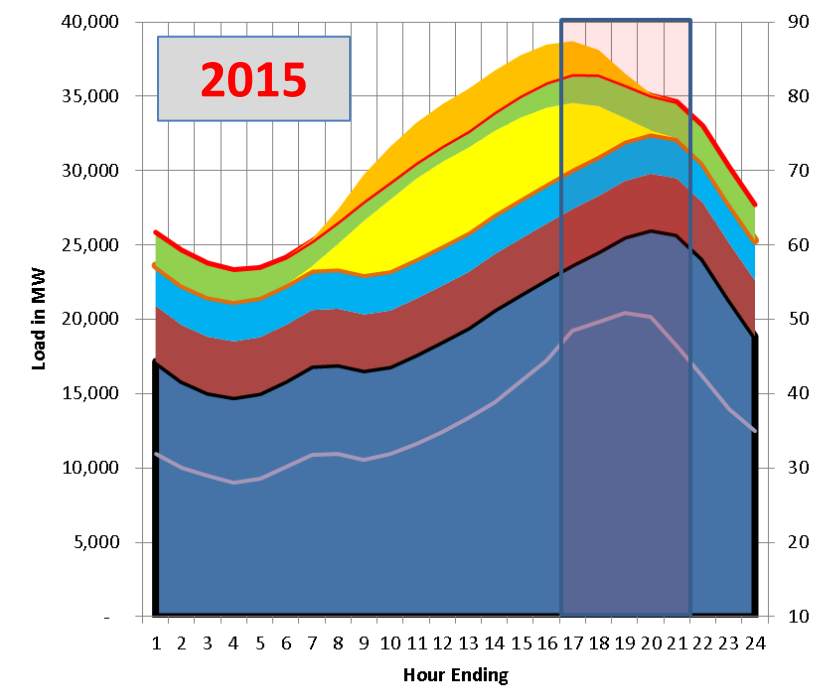
DEER Peak Period Refresh: PG&E Perspective

Jan Grygier
April 16, 2018

“Raw” Load, Gross Load, Net Load and Day-Ahead Price, Summers 2011-2017



- DG PV
- Gross load
- Wind
- Solar
- Net load
- Max hydro
- Nuclear / Baseload
- Adjusted net load
- Actual Price



- DG PV
- Gross load
- Wind
- Solar
- Net load
- Max hydro
- Nuclear / Baseload
- Adjusted net load
- Actual Price

Hour Ending

Hour Ending

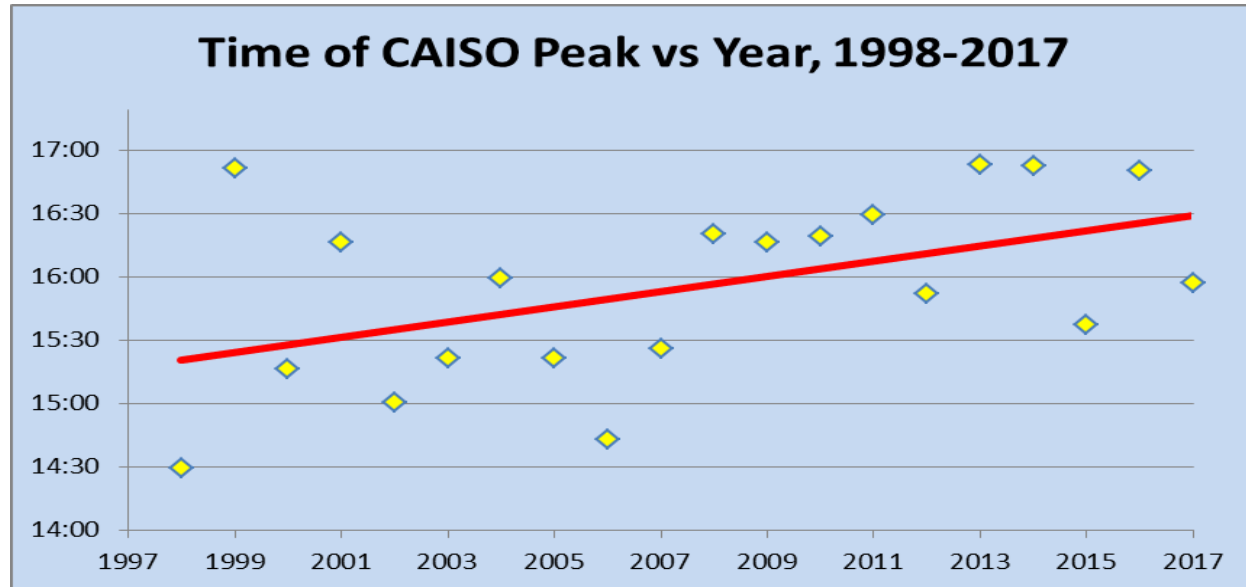


What About Really Hot Days?

Time of annual CAISO peak (gross) load has shifted about an hour later since 1998, now generally between 4 and 5 PM

Data Source:

<http://www.aiso.com/documents/californiaisopeakloadhistory.pdf>



Peak CAISO Net Load in top four PG&E load days in 2017 occurred between 6-8 PM

Peak PG&E (gross) load in top four days of 2017 occurred between 5-6 PM*
*Other IOUs peak a bit earlier

Data Source: CAISO OASIS

