



Inland Regional Energy Network Codes and Standards Technical Support Program Implementation Plan

May 10, 2023

Page Intentionally Left Blank

Contents

Program Overview.....	5
Program Budget and Savings.....	5
1. Program and/or Sub-Program Name	5
2. Program / Sub-Program ID number	5
3. Program / Sub-program Budget Table	5
4. Program / Sub-program Gross Impacts Table.....	5
5. Program / Sub-Program Cost Effectiveness (TRC)	5
6. Program / Sub-Program Cost Effectiveness (PAC):	5
7. Type of Program / Sub-Program Implementer (PA-delivered, third party-delivered or Partnership):	6
8. Market Sector(s)(i.e., residential, commercial, industrial, agricultural, public).....	6
9. Program / Sub-program Type	6
10. Market channel(s) (i.e., downstream, midstream, and/or upstream) and Intervention Strategies (e.g., direct install, incentive, finance, audit, technical assistance, etc.), campaign goals, and timeline	6
Implementation Plan Narrative	7
11. Program Description.....	7
12. Program Delivery and Customer Services	7
13. Program Design and Best Practices	8
14. Innovation	8
15. Metrics	8
16. For Programs claiming to-code savings.....	9
17. Pilots	9
18. Workforce Education and Training	9
19. Workforce Standards.....	10
20. Disadvantaged Worker Plan.....	10
21. Additional information.....	10
Supporting Documents	11
22. Program Manuals and Program Rules	11
a. Eligible Measures or Measure Eligibility:	11
b. Customer Eligibility Requirements:	11
c. Contractor Eligibility Requirements:	11
d. Participating Contractors, Manufacturers, Retailers, Distributors, and Partners:	11
e. Additional Services:	11

f.	Audits:.....	11
g.	Sub-Program Quality Assurance Provisions:.....	11
h.	Other Program Metrics:.....	12
23.	Program Theory and Program Logic Model.....	12
24.	Process Flow Chart.....	13
25.	Incentive Tables, Workpapers, Software Tools.....	13
26.	Quantitative Program Targets.....	13
27.	Diagram of Program.....	14
28.	Evaluation, Measurement & Verification (EM&V).....	14
29.	Normalized Metered Energy Consumption (NMEC).....	14

PROGRAM OVERVIEW

The Inland Regional Energy Network's (I-REN) Codes & Standards (C&S) Technical Support Program is a non-resource program with the purpose of developing technical assistance tools and resources to assist building departments and the building industry with understanding, evaluating, and permitting the energy codes. The Program aims to Identify and address the areas of greatest need for improved code compliance, in collaboration with local governments and the building industry.

PROGRAM BUDGET AND SAVINGS

1. Program and/or Sub-Program Name

C&S Technical Support Program

2. Program / Sub-Program ID number

IREN-CS-002

3. Program / Sub-program Budget Table

C&S Technical Support	2022	2023	2024	2025	2026	2027
Administration	\$66,181	\$69,868	\$72,663	\$75,569	\$75,569	\$75,569
Marketing, Education, & Outreach	\$36,146	\$36,552	\$38,015	\$39,534	\$39,534	\$39,534
Implementation (Non-Incentives)	\$483,446	\$502,785	\$522,895	\$543,813	\$543,813	\$543,813
Incentives						
Total	\$585,773	\$609,205	\$633,573	\$658,916	\$658,916	\$658,916

4. Program / Sub-program Gross Impacts Table

The C&S Technical Support Program is a non-resource program and will not claim any savings. Instead, the program will deliver savings through the development of technical assistance tools and resources for building department staff, construction firms, and the building industry to effectively implement energy efficiency codes and standards to improve the understanding, evaluation, and permitting of energy codes and standards.

5. Program / Sub-Program Cost Effectiveness (TRC)

As a non-resource program, I-REN's C&S Technical Support Program does not have a cost effectiveness requirement.

6. Program / Sub-Program Cost Effectiveness (PAC):

As a non-resource program, I-REN's C&S Technical Support Program does not have a cost effectiveness requirement.

7. Type of Program / Sub-Program Implementer (PA-delivered, third party-delivered or Partnership):

Implementer	Yes	No
PA		x
Third Party	x	
Partnership		x

8. Market Sector(s)(i.e., residential, commercial, industrial, agricultural, public)

I-REN’s C&S Technical Support Program is cross-cutting coordination with the Public Sector by incorporating codes services for local building department staff, to help those individuals perform their jobs and build capacity in their departments to better enforce codes and standards. This supports better code compliance in publicly owned buildings, especially as some of the relatively newer cities in I-REN’s territory begin to explore building their own public infrastructure and facilities. These synergies support I-REN’s Public Sector approach, which focuses on empowering local governments as leaders in energy efficiency through their own publicly owned facilities.

9. Program / Sub-program Type

Primary Program Type	Yes	No
Non-Resource	x	
Resource Acquisition		x
Market Transformation		x

10. Market channel(s) (i.e., downstream, midstream, and/or upstream) and Intervention Strategies (e.g., direct install, incentive, finance, audit, technical assistance, etc.), campaign goals, and timeline

Market Channels and Intervention Strategies	Yes	No
Upstream		X
Midstream		X
Downstream		X
Direct Install		X
Non-resource	X	
Finance		X

I-REN’s governing agencies have a foundation of strong relationships with local governments and jurisdictions in their service territory, and their approach to the public sector has been carefully designed

to build on those successes. With their existing connections, I-REN is well positioned to reach local agencies with the strategies and tactics outlined in this table.

	Intervention Strategy	Tactic	Objective
Technical Assistance	S1.1 Develop technical assistance tools and resources to assist building departments and the building industry with understanding, evaluating, and permitting the energy codes.	T1.1.1 Identify and address the areas of greatest need for improved code compliance, in collaboration with local governments and the building industry. T1.1.2 Improve consistency in code enforcement and compliance resources across the region by facilitating cooperation between local governments. T1.1.3 Evaluate and develop model ordinances and policies for use regionally.	<i>Deliver locally informed resources and tools that streamline code compliance and enforcement and increase permit closeout.</i>

IMPLEMENTATION PLAN NARRATIVE

11. Program Description

The Inland Regional Energy Network (I-REN) Codes and Standards (C&S) Technical Support program is designed to address and remedy inconsistencies in current investor-owned utility (IOU) offerings for the I-REN territory. By enhancing knowledge and adherence to energy codes in building design and construction, the program serves Riverside and San Bernardino Counties in reducing energy usage within the region.

I-REN’s C&S Technical Support Program will bring direct in-house experience developing and implementing surveys of their member local governments and constituents to assess gaps in program areas. Their staff compile and analyze the responses, prepare reports, and outreach materials to share their findings, and ultimately use those insights to make improvements to programs. Rigorous data collection will be a near-term effort to support implementation of other activities in the C&S sector. Key partners for this effort include the C&S enforcement and permitting community, such as local government agencies and building departments, as well as frequent permit applicants such as private construction and architectural firms. The objective of the program is to deliver locally informed resources and tools that streamline code compliance and enforcement and increase permit closeout.

12. Program Delivery and Customer Services

I-REN’s primary tactic for this program will be to Identify and address the areas of greatest need for improved code compliance, in collaboration with local governments and the building industry. The proposed activities to implement this tactic may include but are not limited to the following:

- Collaborate with local governments to design and deploy an effective survey instrument, via an online survey platform already utilized by I-REN.

- Conduct additional in-depth phone interviews as needed to survey key decision makers and/or to fill identified gaps in response data.
- Review secondary data sources obtained in collaboration with local government agencies and code officials.
- Compile results and preparation of report materials for sharing with local governments.
- Analyze results, in cooperation with local governments, to inform program planning efforts and evaluation, measurement and verification (EM&V).

13. Program Design and Best Practices

I-REN's C&S Technical Support program design was chosen by I-REN in response to challenges faced by Building Department staff, local governments, building professionals, and developers regarding compliance. To address these challenges and achieve the program's objective of Improving understanding of energy efficiency codes and standards among local building departments and the building industry to increase implementation and compliance, I-REN intends to implement the following strategy:

- Establish an ongoing training program to assist building department staff and the building industry to support, understand, and effectively implement energy efficiency codes and standards.

To ensure efficacy of this strategy, I-REN's C&S Training and Education Program will deploy the following tactics:

- Identify and address the areas of greatest need for improved code compliance, in collaboration with local governments and the building industry.
- Develop training curriculum to address gaps in compliance with current requirements. Offer ongoing training on changes and trends in C&S.

14. Innovation

One of the greatest benefits of a regional organization working with local jurisdictions is the ability to leverage the know-how of a large body of professionals and then to distribute that knowledge and resources to less advantaged groups. The I-REN team will enable this regional collaboration by identifying important areas for policy improvements, such as future reach codes, efficiency, and fire ordinances, et.al., and work with jurisdictions to create model ordinances and policies that can be adopted by interested local governments. This tactic will also enable I-REN to test and pilot various approaches to common concerns and establish an effective regional response that can be easily and affordably adopted region-wide. This effort will ensure dollars spent are well utilized and have the greatest impact possible.

Specifically, I-REN will survey, and interview key jurisdictions as needed to understand the major areas for concern and potential policies. Then working through their committee structure, they will develop regionally appropriate model ordinances and vet and refine them with participating local governments. Once finalized, these model resources will be made available to any jurisdiction in the region. I-REN will provide ongoing technical assistance to adjust and implement the ordinances as well as provide ongoing monitoring and tracking to address any needed changes or updates.

15. Metrics

As I-REN identifies its evaluation and metric needs to develop a robust plan, I-REN will join the existing evaluation, measurement, & verification (EM&V) framework to support the Energy Division's ongoing efforts. Partnering with the CPUC to provide input on the development of guidelines and participate in studies, working groups, peer coordination groups, and stakeholder meetings is key in helping evaluating C&S knowledge, compliance, and enforcement throughout the region. I-REN led EM&V efforts are currently focused on verifying the non-resource benefits of programs such as the WE&T and C&S programs' efforts to promote best practices through market characterization and process evaluation. I-REN's coordination, throughout the program's life cycle, with CPUC staff is in accordance with guidance in the most recent Energy Division and PA Energy Efficiency EM&V Plan, following the process for Commission Oversight of PA EM&V projects.

I-REN's C&S Technical Support program will embed data collection tools into each program activity to support well-rounded evaluations. Software adoption metrics will track a jurisdiction's progress and resulting impacts, from commitment to implementation, when available. Use of available resources metrics will be tracked as relevant to the individual resource.

The following are examples of metrics that will track program performance:

- Percentage of program participants who have increased knowledge of code compliance
- Number of jurisdictions that have applied for state or federal funding
- Percentage of event I-REN attendees from hard-to-reach communities (HTR)
- Number of permits pulled

16. For Programs claiming to-code savings

Claiming to-code savings is not applicable for the I-REN's Technical Support program.

17. Pilots

No pilots will be operated as part of this program.

18. Workforce Education and Training

A key aspect of I-REN's C&S Technical Support program will assist building departments and the building industry with understanding, evaluating, and permitting the energy codes.

Through this effort, I-REN will partner with the California Energy Commission (CEC) and other industry partners to facilitate education and training which allows for shared engagement strategies tailored to the unique conditions at both city and county levels. Additionally, this partnership will help build valuable relationships between Building Department staff, Title 24 compliance specialists, builders, real estate developers, and emerging technology producers – all of which conduct job training and placement within their respective departments.

I-REN will encourage and increase building professional participation through use of local assets, coordination with IOU offerings, bolster the compliance improvement program success, and deliver multiple training modalities across the region by a team of subject matter experts. I-REN's C&S Training and Education program will provide access to trainings, tools, and resources through the following, not limited to, means:

- Host regional policy forums
- Promote, educate, and coordinate with Energy Code Ace

- Provide Online Courses and Checklists
 - Provide access to training events for building departments and building professionals.
- Examples of cross-cutting trainings and resources:
- Title 24 trainings
 - Measure level trainings, such as HVAC & QII
 - Commercial passive solar
 - Zero carbon and passive home design
 - Daylighting, controls, and automation
 - ICC and AIA curriculum
 - Online Library (Energy Code Ace coordination)
 - SolarAPP+
 - CodeCycle
 - All RENs online courses
- Provide Spanish language access to resources and trainings
 - Offer access to training video library
 - Offer regional online permit coordination

These resources support staff building within the building departments and building industry as it allows for greater access to training, certifications, tools, and additional career pathways.

19. Workforce Standards

Workforce Standards are not applicable for this program.

20. Disadvantaged Worker Plan

I-REN's approach to serving the C&S sector incorporates training for local building department staff, to help those individuals perform their jobs and build capacity in their departments to better enforce codes and standards. This is important for developing a skilled workforce in some of the rural districts with less resources in their local building departments, and for areas that include underserved and disadvantaged communities, in line with the directive in Senate Bill 350.

Collaborating with local non-profit organizations presents an avenue for establishing career paths for underprivileged workers, as many of the contractors and crew members reside in the disadvantaged communities they serve. To promote building codes and enhance adherence to energy efficiency standards in both new construction and retrofit markets, I-REN will provide mentorship and training initiatives. An example is I-REN's Energy Fellowship, a cross-cutting Workforce Education & Training Program that partners with CivicSpark – a Governor's Initiative AmeriCorps program dedicated to addressing community resilience issues through building energy knowledge and capacity for local public agencies.

21. Additional information

I-REN's C&S Technical Support program does not provide incentives to customers or implementers, and the guidelines in D.18.05.041 Section 2.2.1. regarding incentive design are not directly relevant. However, the principles behind this program align with the guidance of the decision, which aims to optimize the value of investments in energy efficiency made by all stakeholders involved in implementing building codes. By promoting compliance and enforcement of building codes, I-REN is supporting the goal of achieving maximum energy efficiency savings in projects that are supported by non-ratepayer funds.

SUPPORTING DOCUMENTS

22. Program Manuals and Program Rules

a. Eligible Measures or Measure Eligibility:

Energy efficiency measures are not included in the I-REN C&S Technical Support program. Measure eligibility and measure lists are not applicable.

b. Customer Eligibility Requirements:

I-REN will not target utility customers as a specific group. Thus, customer eligibility criteria requirements are not relevant.

c. Contractor Eligibility Requirements:

Building Department staff, project engineers, building and specialty inspectors, architects and other design-side stakeholders throughout the I-REN territory are targeted as well. Specific types of contractors or design-side stakeholder participation is not limited.

Licensed building professionals and contractors performing building improvements impacted by code will be targeted to participate in the C&S Technical Support program (license types B, C2, C10, C20, C36, C39, etc.).

d. Participating Contractors, Manufacturers, Retailers, Distributors, and Partners:

To achieve program objectives, I-REN leverages current connections with stakeholder groups while also forging new alliances through collaboration with local governments, building departments, and IOU partners.

The C&S Training and Education program is not an upstream or midstream incentive program and does not have participating contractors, manufacturers, retailers, or distributors.

e. Additional Services:

I-REN will complement regionally specific tools through an online portal. The portal will have links to all statewide resources and provide locally relevant case studies, information, and details to assist in supporting local building officials, particularly small jurisdictions, improve code compliance and permit processes.

f. Audits:

Pre and post audits are not applicable as measures will not be installed for this program. Evaluations following trainings will be conducted to measure retention of information provided.

g. Sub-Program Quality Assurance Provisions:

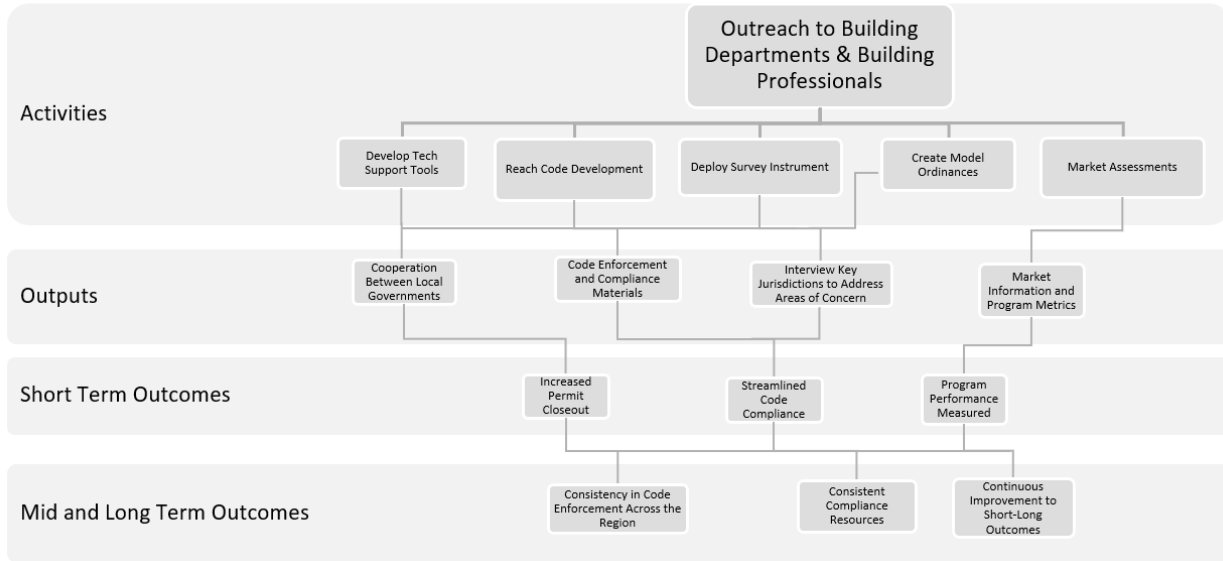
The I-REN C&S Technical Support program does not include any measure installation. Quality assurance requirements, sampling rates, and quality assurance personnel certifications are not applicable.

h. Other Program Metrics:

Other Program Metrics are not applicable.

23. Program Theory and Program Logic Model

I-REN Codes & Standards Technical Support Program Logic Model



24. Process Flow Chart

I-REN’s C&S Technical Support program does not have a direct program process flow. Therefore, a process flow chart is not included. Instead, the logic model and program diagram display linkages between program activities and the program theory.

25. Incentive Tables, Workpapers, Software Tools

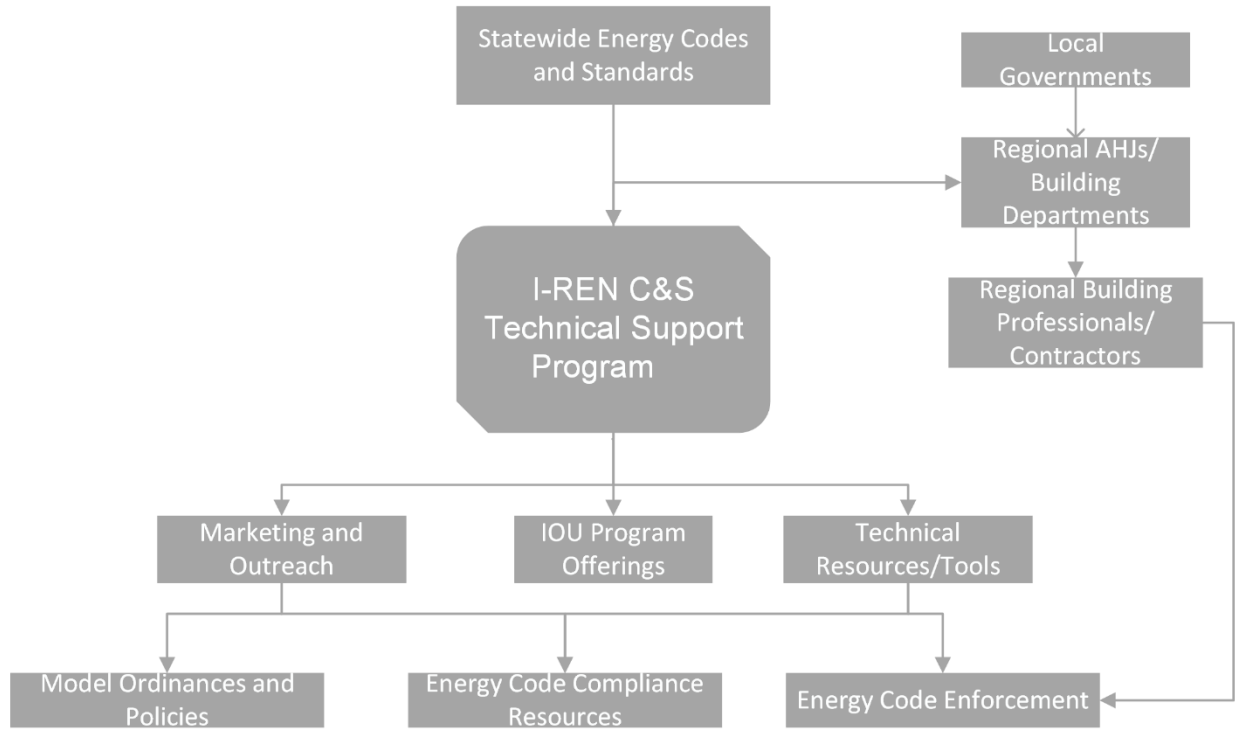
Incentive tables, workpapers, and software tools are not applicable as I-REN’s C&S Technical Support program does not offer incentives, nor does it claim energy savings.

26. Quantitative Program Targets

As a non-resource program, I-REN’s C&S Technical Support program utilizes alternative metrics to track program performance and progress towards goals. Future targets are to be determined (TBD) as the California Title 24 Building Energy Efficiency Standards update on a three-year cycle.

Codes & Standards Technical Support Program	Baseline Year	Short Term Target 2021	Short Term Target 2022	Short Term Target 2023	Mid Term Target (2024-2025)
Local government Reach Codes implemented	2021	N/A	N/A	TBD	TBD
Count of Jurisdictions that use I-REN tools/resources for code compliance	2021	N/A	N/A	TBD	TBD
Increase in code compliance knowledge	2021	N/A	N/A	TBD	TBD
Number of permits pulled	2021	N/A	N/A	TBD	TBD
Number of jurisdictions that applied for federal/state funding	2021	N/A	N/A	TBD	TBD

27. Diagram of Program



28. Evaluation, Measurement & Verification (EM&V)

Collaborating with the CPUC, as well as other PAs, the CEC, Energy Division, and the region's C&S community is one of I-REN's priorities as a means of supporting statewide and regional efforts around C&S EM&V Roadmaps and Plans. In addition to collaborating with the CPUC, I-REN will also partner with other stakeholders, to ensure that data collection activities are embedded in the program design to meet evaluation requirements and help expand the understanding of REN program impacts in this cross-cutting sector.

29. Normalized Metered Energy Consumption (NMEC)

Normalized Metered Energy Consumption is not applicable for this program.