

DEER Peak Period Refresh: PG&E Perspective

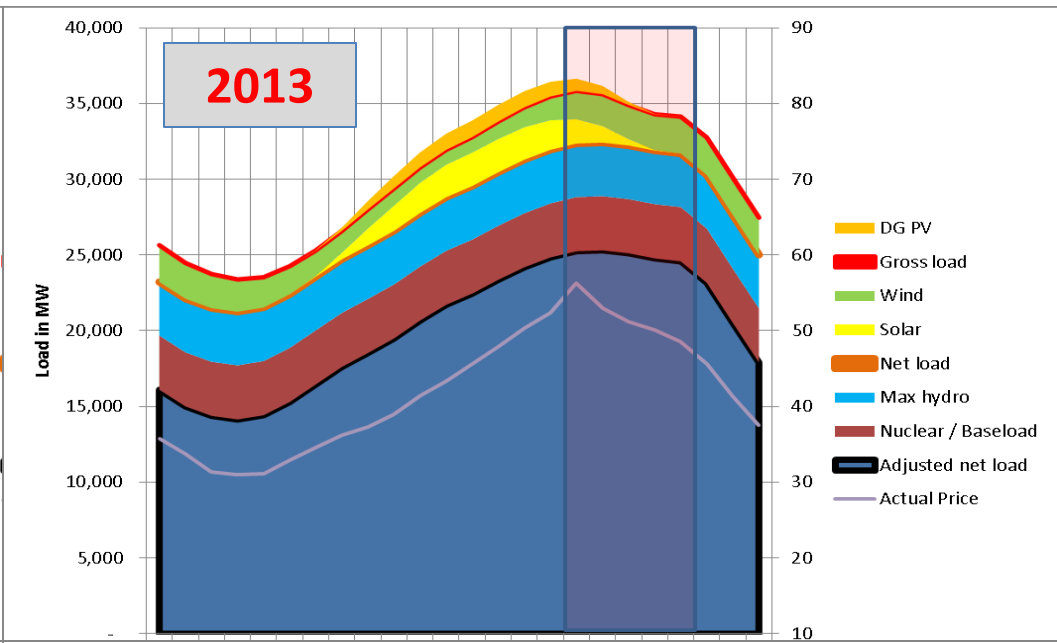
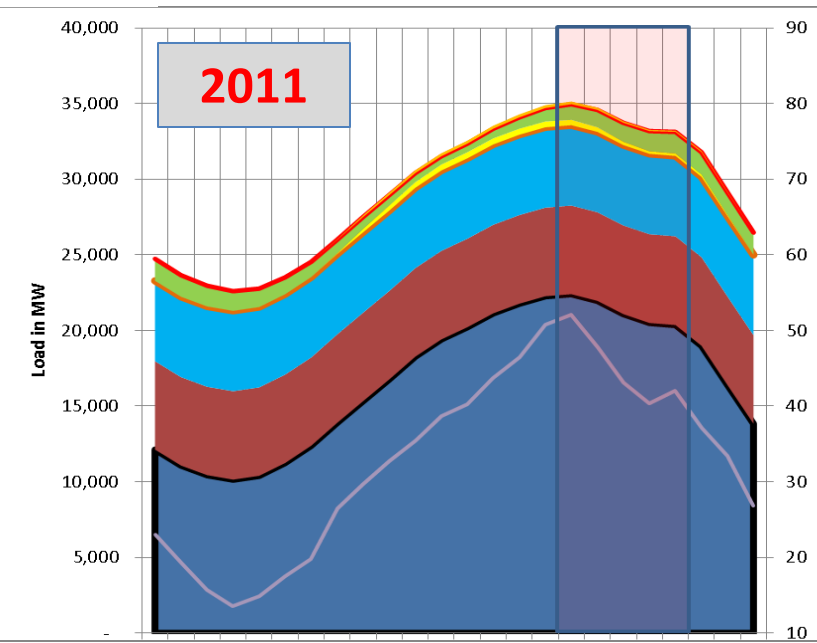
Jan Grygier
April 3, 2018



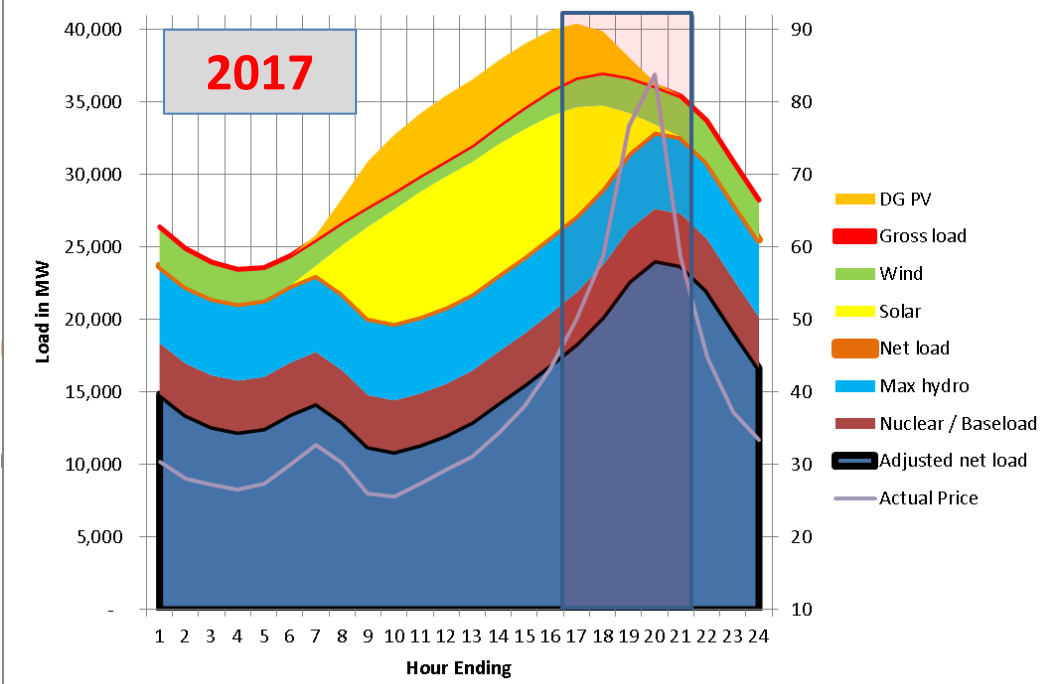
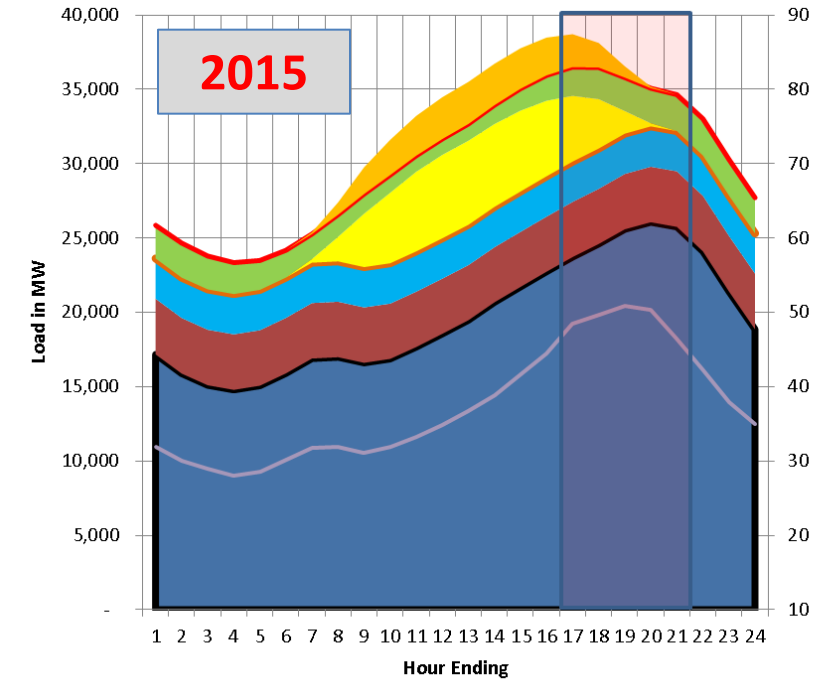
Regulatory History

- **All three IOUs are moving Residential and Non-Res rates to 4-9 peak**
 - Each IOU has its own timing for Residential and Non-Residential customers
- PG&E 2015 RDW (Rate Design Window)
 - Optional residential rates
 - Eliminated old rate E-7 (noon-6pm peak)
 - Closed old rate E-6 to new customers (1pm-6pm)
 - New non-tiered rate E-TOU-B (4pm-9pm peak)
 - New tiered rate E-TOU-A (3pm-8pm peak, goes to 4-9 in 2021)
- TOU OIR for all IOUs (Time of Use)
 - Set policy for TOU rate cases going forward
 - Input from CAISO, which suggested 4-9 peak
 - Nine principles, start with marginal generation costs
 - TOU periods should generally be stable for at least five years
 - 5 years of grandfathering for residential, 10 years for non-res
- SDG&E 2016 GRC Phase II 4-9 peak; Rates implemented 12/17
- PG&E 2017 GRC Phase II Proposed 5-10pm peak, settled 4-9pm; 2019
- SCE 2016 RDW, 2018 GRC Phase II 4-9 peak; 2019
- 2019 RDW (3 IOUs) – All proposed 4-9 or 5-8 peak, PDP hours etc.

“Raw” Load, Gross Load, Net Load and Day-Ahead Price, Summers 2011-2017



- DG PV
- Gross load
- Wind
- Solar
- Net load
- Max hydro
- Nuclear / Baseload
- Adjusted net load
- Actual Price



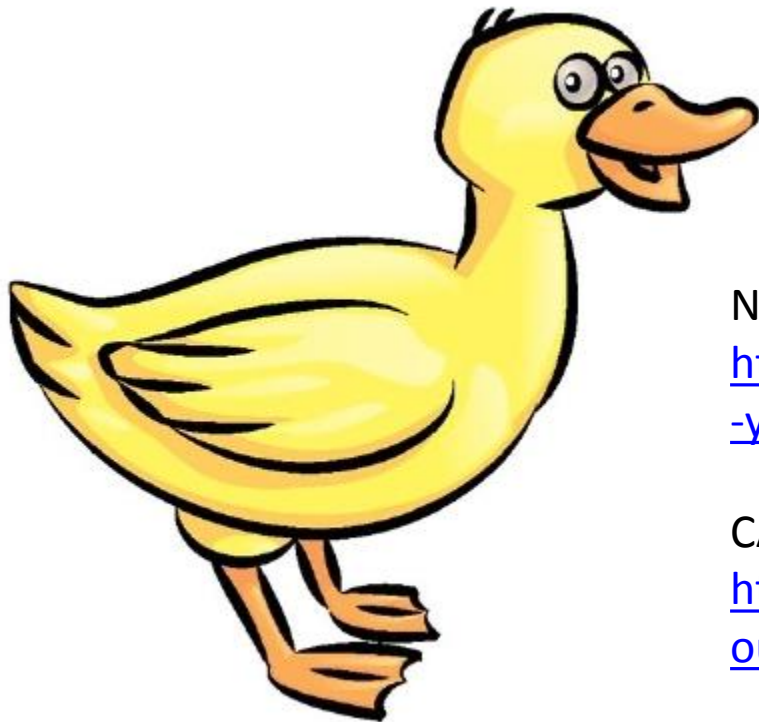
- DG PV
- Gross load
- Wind
- Solar
- Net load
- Max hydro
- Nuclear / Baseload
- Adjusted net load
- Actual Price

Hour Ending

Hour Ending



Happy 10 Year Anniversary!!!



NREL Link:

<https://www.nrel.gov/news/program/2018/10-years-duck-curve.html>

CAISO Link:

https://www.caiso.com/documents/flexibleresourceshelprenewables_fastfacts.pdf